

Datasheet for ABIN7435979
anti-CPA1 antibody (AA 205-419)

6 Images

[Go to Product page](#)

Overview

Quantity:	100 µL
Target:	CPA1
Binding Specificity:	AA 205-419
Reactivity:	Rat
Host:	Rabbit
Clonality:	Polyclonal
Conjugate:	This CPA1 antibody is un-conjugated
Application:	Western Blotting (WB), Immunohistochemistry (IHC), Immunoprecipitation (IP), Immunocytochemistry (ICC)

Product Details

Purpose:	Polyclonal Antibody to Carboxypeptidase A1, Pancreatic (CPA1)
Immunogen:	Recombinant Carboxypeptidase A1, Pancreatic (CPA1) corresponding to Thr205~Tyr419
Isotype:	IgG
Specificity:	The antibody is a rabbit polyclonal antibody raised against CPA1. It has been selected for its ability to recognize CPA1 in immunohistochemical staining and western blotting.
Cross-Reactivity:	Mouse
Purification:	Antigen-specific affinity chromatography followed by Protein A affinity chromatography

Target Details

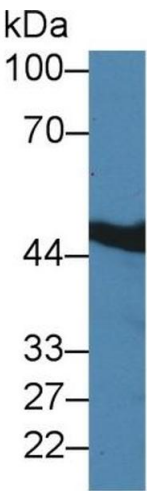
Target:	CPA1
Alternative Name:	Carboxypeptidase A1, Pancreatic (CPA1 Products)

Application Details

Application Notes:	Western blotting: 0.5-2 µg/mL 1:300-1200 Immunohistochemistry: 5-20 µg/mL 1:30-120 Immunocytochemistry: 5-20 µg/mL 1:30-120 Optimal working dilutions must be determined by end user.
Comment:	The thermal stability is described by the loss rate. The loss rate was determined by accelerated thermal degradation test, that is, incubate the protein at 37°C for 48h, and no obvious degradation and precipitation were observed. The loss rate is less than 5% within the expiration date under appropriate storage condition.
Restrictions:	For Research Use only

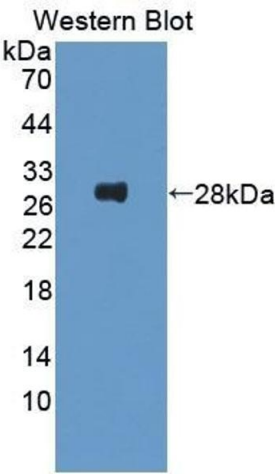
Handling

Format:	Liquid
Buffer:	PBS, pH 7.4, containing 0.02 % Sodium azide, 50 % glycerol.
Preservative:	Sodium azide
Precaution of Use:	This product contains Sodium azide: a POISONOUS AND HAZARDOUS SUBSTANCE which should be handled by trained staff only.
Storage:	4 °C,-20 °C
Storage Comment:	Store at 4°C for frequent use. Stored at -20°C in a manual defrost freezer for two year without detectable loss of activity. Avoid repeated freeze-thaw cycles.
Expiry Date:	24 months



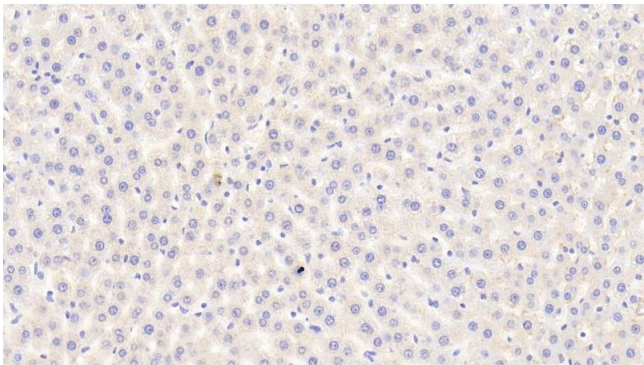
Western Blotting

Image 1. Detection of CPA1 in Rat Serum using Polyclonal Antibody to Carboxypeptidase A1, Pancreatic (CPA1)



Western Blotting

Image 2. Detection of Recombinant CPA1, Rat using Polyclonal Antibody to Carboxypeptidase A1, Pancreatic (CPA1)



Immunohistochemistry

Image 3. Detection of CPA1 in Rat Liver Tissue using Polyclonal Antibody to Carboxypeptidase A1, Pancreatic (CPA1)

Please check the [product details page](#) for more images. Overall 6 images are available for ABIN7435979.