

Datasheet for ABIN7436000  
**anti-CRISP3 antibody (AA 21-243)**

## 3 Images

[Go to Product page](#)

## Overview

Quantity:	100 µL
Target:	CRISP3
Binding Specificity:	AA 21-243
Reactivity:	Human
Host:	Rabbit
Clonality:	Polyclonal
Conjugate:	This CRISP3 antibody is un-conjugated
Application:	Immunohistochemistry (IHC), Western Blotting (WB), Immunoprecipitation (IP), Immunocytochemistry (ICC)

## Product Details

Purpose:	Polyclonal Antibody to Cysteine Rich Secretory Protein 3 (CRISP3)
Immunogen:	Recombinant Cysteine Rich Secretory Protein 3 (CRISP3) corresponding to Asn21~Ser243
Isotype:	IgG
Specificity:	The antibody is a rabbit polyclonal antibody raised against CRISP3. It has been selected for its ability to recognize CRISP3 in immunohistochemical staining and western blotting.
Cross-Reactivity:	Pig, Rat
Purification:	Antigen-specific affinity chromatography followed by Protein A affinity chromatography

## Target Details

Target:	CRISP3
Alternative Name:	Cysteine Rich Secretory Protein 3 ( <a href="#">CRISP3 Products</a> )
Background:	CRS3, Aeg2, CRISP-3, SGP28, Specific granule protein of 28 kDa

## Application Details

Application Notes:	Western blotting: 0.5-2 µg/mL 1:500-2000 Immunohistochemistry: 5-20 µg/mL 1:50-200 Immunocytochemistry: 5-20 µg/mL 1:50-200 Optimal working dilutions must be determined by end user.
Comment:	The thermal stability is described by the loss rate. The loss rate was determined by accelerated thermal degradation test, that is, incubate the protein at 37°C for 48h, and no obvious degradation and precipitation were observed. The loss rate is less than 5% within the expiration date under appropriate storage condition.
Restrictions:	For Research Use only

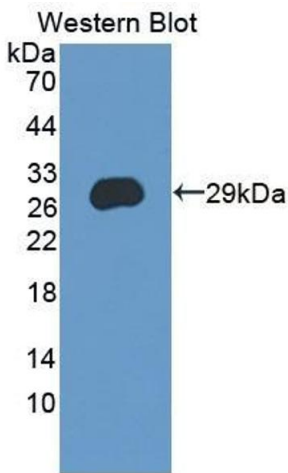
## Handling

Format:	Liquid
Buffer:	0.01M PBS, pH 7.4, containing 0.05 % Proclin-300, 50 % glycerol.
Preservative:	ProClin
Precaution of Use:	This product contains ProClin: a POISONOUS AND HAZARDOUS SUBSTANCE which should be handled by trained staff only.
Storage:	4 °C,-20 °C
Storage Comment:	Store at 4°C for frequent use. Stored at -20°C in a manual defrost freezer for two year without detectable loss of activity. Avoid repeated freeze-thaw cycles.
Expiry Date:	24 months



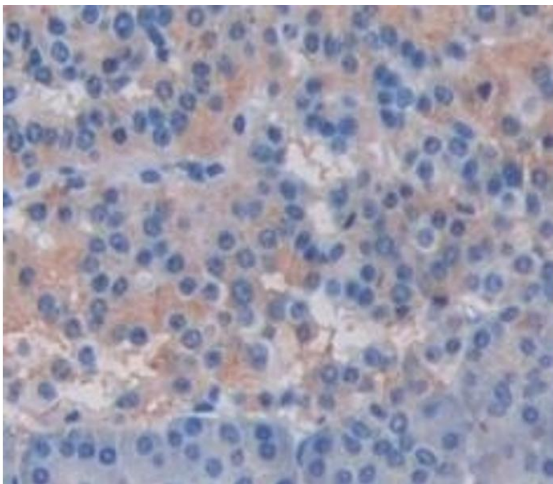
**Western Blotting**

**Image 1.** Detection of CRISP3 in Porcine Kidney lysate using Polyclonal Antibody to Cysteine Rich Secretory Protein 3 (CRISP3)



**Western Blotting**

**Image 2.** Detection of Recombinant CRISP3, Human using Polyclonal Antibody to Cysteine Rich Secretory Protein 3 (CRISP3)



**Immunohistochemistry**

**Image 3.** #VALUE!