

Datasheet for ABIN7436006
anti-CPT1A antibody (AA 191-353)

6 Images

[Go to Product page](#)

Overview

Quantity:	100 µL
Target:	CPT1A
Binding Specificity:	AA 191-353
Reactivity:	Human
Host:	Rabbit
Clonality:	Polyclonal
Conjugate:	This CPT1A antibody is un-conjugated
Application:	Western Blotting (WB), Immunohistochemistry (IHC), Immunoprecipitation (IP), Immunocytochemistry (ICC)

Product Details

Purpose:	Polyclonal Antibody to Carnitine Palmitoyltransferase 1A, Liver (CPT1A)
Immunogen:	Recombinant Carnitine Palmitoyltransferase 1A, Liver (CPT1A) corresponding to Arg191~Leu353 (Accession # P50416)
Isotype:	IgG
Specificity:	The antibody is a rabbit polyclonal antibody raised against CPT1A. It has been selected for its ability to recognize CPT1A in immunohistochemical staining and western blotting.
Cross-Reactivity:	Mouse, Rat
Purification:	Antigen-specific affinity chromatography followed by Protein A affinity chromatography

Target Details

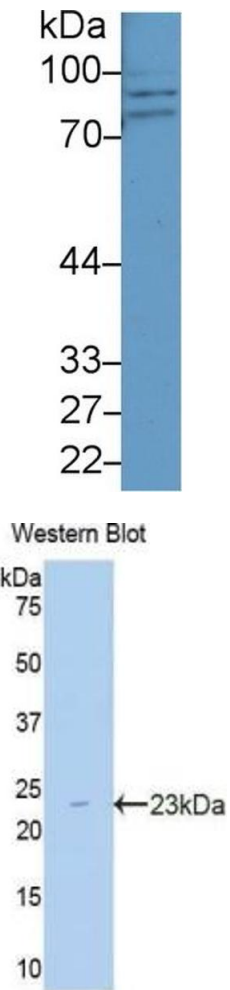
Target:	CPT1A
Alternative Name:	Carnitine Palmitoyltransferase 1A, Liver (CPT1A Products)
Background:	CPT1-L, Carnitine O-palmitoyltransferase I, liver isoform
Pathways:	AMPK Signaling , Regulation of Lipid Metabolism by PPARalpha , Feeding Behaviour , Monocarboxylic Acid Catabolic Process

Application Details

Application Notes:	Western blotting: 0.5-2 µg/mL 1:500-2000 Immunohistochemistry: 5-20 µg/mL 1:50-200 Immunocytochemistry: 5-20 µg/mL 1:50-200 Optimal working dilutions must be determined by end user.
Comment:	The thermal stability is described by the loss rate. The loss rate was determined by accelerated thermal degradation test, that is, incubate the protein at 37°C for 48h, and no obvious degradation and precipitation were observed. The loss rate is less than 5% within the expiration date under appropriate storage condition.
Restrictions:	For Research Use only

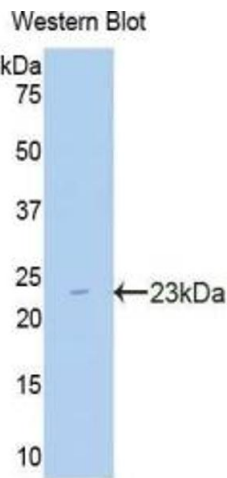
Handling

Format:	Liquid
Buffer:	PBS, pH 7.4, containing 0.02 % Sodium azide, 50 % glycerol.
Preservative:	Sodium azide
Precaution of Use:	This product contains Sodium azide: a POISONOUS AND HAZARDOUS SUBSTANCE which should be handled by trained staff only.
Storage:	4 °C,-20 °C
Storage Comment:	Store at 4°C for frequent use. Stored at -20°C in a manual defrost freezer for two year without detectable loss of activity. Avoid repeated freeze-thaw cycles.
Expiry Date:	24 months



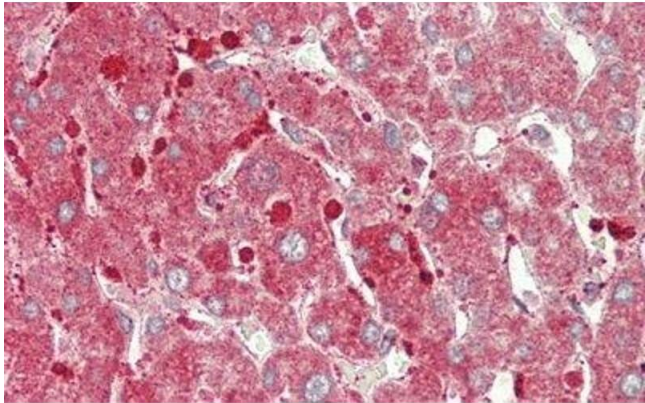
Western Blotting

Image 1. Detection of CPT1A in Rat Kidney lysate using Polyclonal Antibody to Carnitine Palmitoyltransferase 1A, Liver (CPT1A)



Western Blotting

Image 2. Detection of Recombinant CPT1A, Human using Polyclonal Antibody to Carnitine Palmitoyltransferase 1A, Liver (CPT1A)



Immunohistochemistry

Image 3. Detection of CPT1A in Human Liver Tissue using Polyclonal Antibody to Carnitine Palmitoyltransferase 1A, Liver (CPT1A)

Please check the [product details page](#) for more images. Overall 6 images are available for ABIN7436006.