

Datasheet for ABIN7436063

## anti-Lamin A/C antibody (AA 1-422)



[Go to Product page](#)

### 2 Images

#### Overview

Quantity:	100 µL
Target:	Lamin A/C (LMNA)
Binding Specificity:	AA 1-422
Reactivity:	Human
Host:	Rabbit
Clonality:	Polyclonal
Conjugate:	This Lamin A/C antibody is un-conjugated
Application:	Western Blotting (WB), Immunohistochemistry (IHC), Immunoprecipitation (IP), Immunocytochemistry (ICC)

#### Product Details

Purpose:	Polyclonal Antibody to Lamin A/C (LMNA)
Immunogen:	Recombinant Lamin A/C (LMNA) corresponding to Met1~Glu422 with N-terminal His Tag
Isotype:	IgG
Specificity:	The antibody is a rabbit polyclonal antibody raised against LMNA. It has been selected for its ability to recognize LMNA in immunohistochemical staining and western blotting.
Cross-Reactivity:	Mouse, Rat
Purification:	Antigen-specific affinity chromatography followed by Protein A affinity chromatography

## Target Details

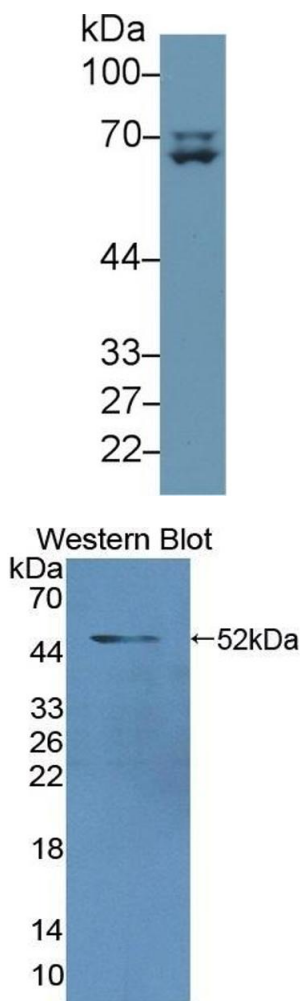
Target:	Lamin A/C (LMNA)
Alternative Name:	Lamin A/C ( <a href="#">LMNA Products</a> )
Background:	CDCD1, CMD1A, CMT2B1, EMD2, FPL, FPLD, HGPS, IDC, LDP1, LFP, LGMD1B, LMN1, LMNC, PRO1, Cardiomyopathy Dilated 1A, Limb Girdle Muscular Dystrophy 1B, Progeria 1
Pathways:	<a href="#">Apoptosis</a> , <a href="#">Caspase Cascade in Apoptosis</a> , <a href="#">ER-Nucleus Signaling</a> , <a href="#">Protein targeting to Nucleus</a>

## Application Details

Application Notes:	Western blotting: 0.5-2 µg/mL 1:170-680 Immunohistochemistry: 5-20 µg/mL 1:17-68 Immunocytochemistry: 5-20 µg/mL 1:17-68 Optimal working dilutions must be determined by end user.
Comment:	The thermal stability is described by the loss rate. The loss rate was determined by accelerated thermal degradation test, that is, incubate the protein at 37°C for 48h, and no obvious degradation and precipitation were observed. The loss rate is less than 5% within the expiration date under appropriate storage condition.
Restrictions:	For Research Use only

## Handling

Format:	Liquid
Buffer:	0.01M PBS, pH 7.4, containing 0.05 % Proclin-300, 50 % glycerol.
Preservative:	ProClin
Precaution of Use:	This product contains ProClin: a POISONOUS AND HAZARDOUS SUBSTANCE which should be handled by trained staff only.
Storage:	4 °C,-20 °C
Storage Comment:	Store at 4°C for frequent use. Stored at -20°C in a manual defrost freezer for two year without detectable loss of activity. Avoid repeated freeze-thaw cycles.
Expiry Date:	24 months



Western Blotting

**Image 1.** Detection of LMNA in Human A375 cell lysate using Polyclonal Antibody to Lamin A/C (LMNA)

Western Blotting

**Image 2.** Detection of Recombinant LMNA, Human using Polyclonal Antibody to Lamin A/C (LMNA)