

Datasheet for ABIN7436159  
**anti-Septin 6 antibody (AA 87-327)**

## 2 Images

[Go to Product page](#)

## Overview

Quantity:	100 µL
Target:	Septin 6 (SEPT6)
Binding Specificity:	AA 87-327
Reactivity:	Human
Host:	Rabbit
Clonality:	Polyclonal
Conjugate:	This Septin 6 antibody is un-conjugated
Application:	Western Blotting (WB), Immunohistochemistry (IHC), Immunoprecipitation (IP), Immunocytochemistry (ICC)

## Product Details

Purpose:	Polyclonal Antibody to Septin 6 (SEPT6)
Immunogen:	Recombinant Septin 6 (SEPT6) corresponding to Asp87~Lys327 (Accession # Q14141)
Isotype:	IgG
Specificity:	The antibody is a rabbit polyclonal antibody raised against SEPT6. It has been selected for its ability to recognize SEPT6 in immunohistochemical staining and western blotting.
Purification:	Antigen-specific affinity chromatography followed by Protein A affinity chromatography

## Target Details

Target:	Septin 6 (SEPT6)
---------	------------------

## Target Details

Alternative Name: Septin 6 ([SEPT6 Products](#))

Background: SEP2

## Application Details

Application Notes: Western blotting: 0.5-2 µg/mL  
Immunohistochemistry: 5-20 µg/mL  
Immunocytochemistry: 5-20 µg/mL  
Optimal working dilutions must be determined by end user.

Comment: The thermal stability is described by the loss rate. The loss rate was determined by accelerated thermal degradation test, that is, incubate the protein at 37°C for 48h, and no obvious degradation and precipitation were observed. The loss rate is less than 5% within the expiration date under appropriate storage condition.

Restrictions: For Research Use only

## Handling

Format: Liquid

Buffer: PBS, pH 7.4, containing 0.02 % Sodium azide, 50 % glycerol.

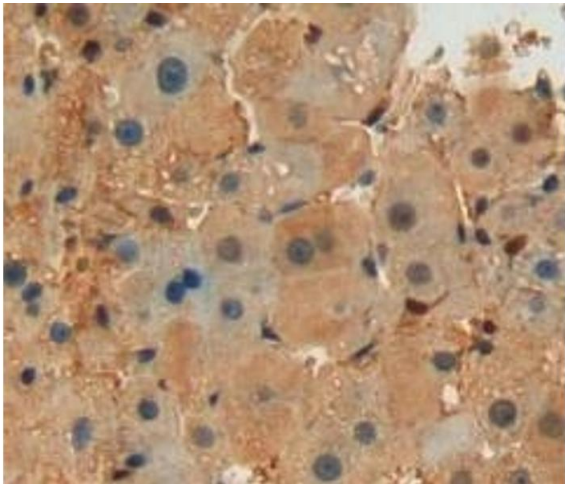
Preservative: Sodium azide

Precaution of Use: This product contains Sodium azide: a POISONOUS AND HAZARDOUS SUBSTANCE which should be handled by trained staff only.

Storage: 4 °C, -20 °C

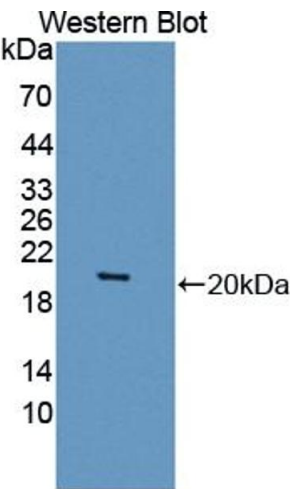
Storage Comment: Store at 4°C for frequent use. Stored at -20°C in a manual defrost freezer for two year without detectable loss of activity. Avoid repeated freeze-thaw cycles.

Expiry Date: 24 months



Immunohistochemistry

Image 1. #VALUE!



Western Blotting

Image 2. Detection of Recombinant SEPT6, Human using Polyclonal Antibody to Septin 6 (SEPT6)