

Datasheet for ABIN7436207
anti-APLP2 antibody (AA 1-210)[Go to Product page](#)

1 Image

Overview

Quantity:	100 µL
Target:	APLP2
Binding Specificity:	AA 1-210
Reactivity:	Human
Host:	Rabbit
Clonality:	Polyclonal
Conjugate:	This APLP2 antibody is un-conjugated
Application:	Western Blotting (WB), Immunohistochemistry (IHC), Immunoprecipitation (IP), Immunocytochemistry (ICC)

Product Details

Purpose:	Polyclonal Antibody to Amyloid Beta Precursor Like Protein 2 (APLP2)
Immunogen:	Recombinant Amyloid Beta Precursor Like Protein 2 (APLP2) corresponding to Met1~Gly210
Isotype:	IgG
Specificity:	The antibody is a rabbit polyclonal antibody raised against APLP2. It has been selected for its ability to recognize APLP2 in immunohistochemical staining and western blotting.
Cross-Reactivity:	Mouse, Rat
Purification:	Antigen-specific affinity chromatography followed by Protein A affinity chromatography

Target Details

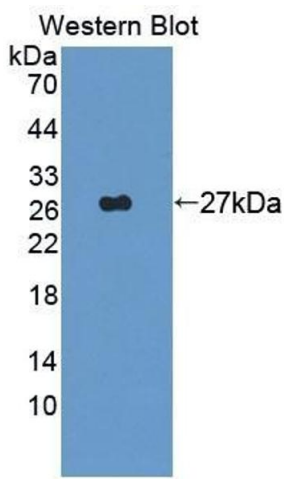
Target:	APLP2
Alternative Name:	Amyloid Beta Precursor Like Protein 2 (APLP2 Products)
Background:	APPH, APPL2, CDEBP, Amyloid protein homolog, CDEI box-binding protein
Pathways:	EGFR Signaling Pathway , Transition Metal Ion Homeostasis , Feeding Behaviour

Application Details

Application Notes:	Western blotting: 0.5-2 µg/mL 1:440-1750 Immunohistochemistry: 5-20 µg/mL 1:44-175 Immunocytochemistry: 5-20 µg/mL 1:44-175 Optimal working dilutions must be determined by end user.
Comment:	The thermal stability is described by the loss rate. The loss rate was determined by accelerated thermal degradation test, that is, incubate the protein at 37°C for 48h, and no obvious degradation and precipitation were observed. The loss rate is less than 5% within the expiration date under appropriate storage condition.
Restrictions:	For Research Use only

Handling

Format:	Liquid
Buffer:	PBS, pH 7.4, containing 0.02 % Sodium azide, 50 % glycerol.
Preservative:	Sodium azide
Precaution of Use:	This product contains Sodium azide: a POISONOUS AND HAZARDOUS SUBSTANCE which should be handled by trained staff only.
Storage:	4 °C, -20 °C
Storage Comment:	Store at 4°C for frequent use. Stored at -20°C in a manual defrost freezer for two year without detectable loss of activity. Avoid repeated freeze-thaw cycles.
Expiry Date:	24 months



Western Blotting

Image 1. Detection of Recombinant APLP2, Human using Polyclonal Antibody to Amyloid Beta Precursor Like Protein 2 (APLP2)