

Datasheet for ABIN7436225
anti-EPSTI1 antibody (AA 73-280)

3 Images

[Go to Product page](#)

Overview

Quantity:	100 µL
Target:	EPSTI1
Binding Specificity:	AA 73-280
Reactivity:	Human
Host:	Rabbit
Clonality:	Polyclonal
Conjugate:	This EPSTI1 antibody is un-conjugated
Application:	Western Blotting (WB), Immunohistochemistry (IHC), Immunoprecipitation (IP), Immunocytochemistry (ICC)

Product Details

Purpose:	Polyclonal Antibody to Epithelial Stromal Interaction 1, Breast (EPSTI1)
Immunogen:	Recombinant Epithelial Stromal Interaction 1, Breast (EPSTI1) corresponding to Asn73~Glu280
Isotype:	IgG
Specificity:	The antibody is a rabbit polyclonal antibody raised against EPSTI1. It has been selected for its ability to recognize EPSTI1 in immunohistochemical staining and western blotting.
Cross-Reactivity:	Pig
Purification:	Antigen-specific affinity chromatography followed by Protein A affinity chromatography

Target Details

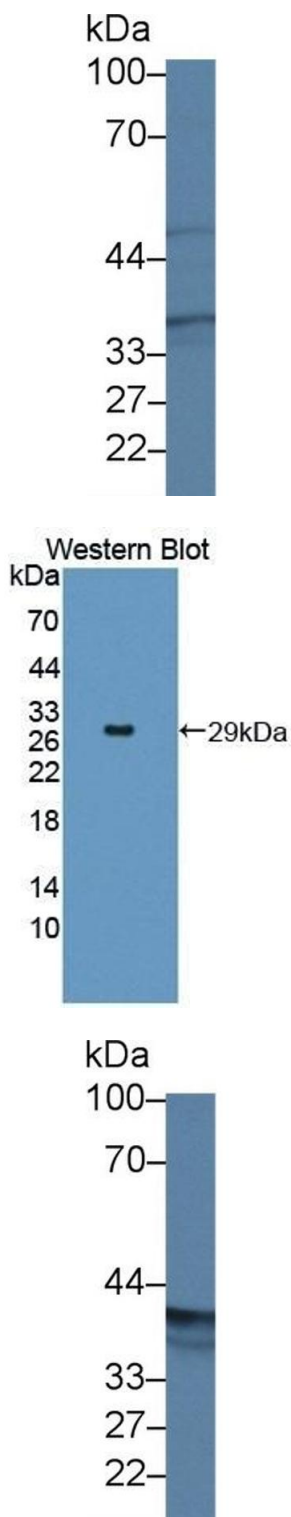
Target:	EPSTI1
Alternative Name:	Epithelial Stromal Interaction 1, Breast (EPSTI1 Products)
Background:	BRESI1, Epithelial-stromal interaction protein 1

Application Details

Application Notes:	Western blotting: 0.5-2 µg/mL Immunohistochemistry: 5-20 µg/mL Immunocytochemistry: 5-20 µg/mL Optimal working dilutions must be determined by end user.
Comment:	The thermal stability is described by the loss rate. The loss rate was determined by accelerated thermal degradation test, that is, incubate the protein at 37°C for 48h, and no obvious degradation and precipitation were observed. The loss rate is less than 5% within the expiration date under appropriate storage condition.
Restrictions:	For Research Use only

Handling

Format:	Liquid
Buffer:	PBS, pH 7.4, containing 0.02 % Sodium azide, 50 % glycerol.
Preservative:	Sodium azide
Precaution of Use:	This product contains Sodium azide: a POISONOUS AND HAZARDOUS SUBSTANCE which should be handled by trained staff only.
Storage:	4 °C,-20 °C
Storage Comment:	Store at 4°C for frequent use. Stored at -20°C in a manual defrost freezer for two year without detectable loss of activity. Avoid repeated freeze-thaw cycles.
Expiry Date:	24 months



Western Blotting

Image 1. Detection of EPSTI1 in Porcine Small intestine lysate using Polyclonal Antibody to Epithelial Stromal Interaction 1, Breast (EPSTI1)

Western Blotting

Image 2. Detection of Recombinant EPSTI1, Human using Polyclonal Antibody to Epithelial Stromal Interaction 1, Breast (EPSTI1)

Western Blotting

Image 3. Detection of EPSTI1 in Human MCF7 cell lysate using Polyclonal Antibody to Epithelial Stromal Interaction 1, Breast (EPSTI1)