



[Go to Product page](#)

Datasheet for ABIN7436282
anti-CALB1 antibody (AA 2-261)

2 Images

Overview

Quantity:	100 µL
Target:	CALB1
Binding Specificity:	AA 2-261
Reactivity:	Rat
Host:	Rabbit
Clonality:	Polyclonal
Conjugate:	This CALB1 antibody is un-conjugated
Application:	Western Blotting (WB), Immunohistochemistry (IHC), Immunoprecipitation (IP), Immunocytochemistry (ICC)

Product Details

Purpose:	Polyclonal Antibody to Calbindin (CALB)
Immunogen:	Recombinant Calbindin (CALB) corresponding to Ala2~Asn261 with N-terminal His Tag
Isotype:	IgG
Specificity:	The antibody is a rabbit polyclonal antibody raised against CALB. It has been selected for its ability to recognize CALB in immunohistochemical staining and western blotting.
Cross-Reactivity:	Human, Mouse
Purification:	Antigen-specific affinity chromatography followed by Protein A affinity chromatography

Target Details

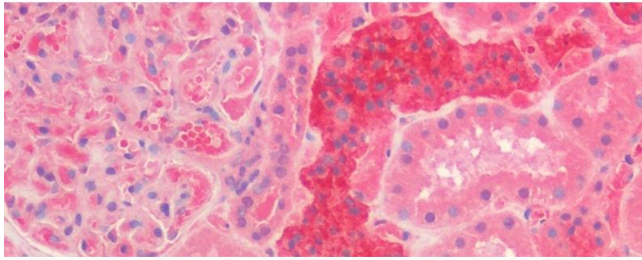
Target:	CALB1
Alternative Name:	Calbindin (CALB1 Products)
Background:	CAB27, Calbindin 1,28 kDa, Calbindin D28, Vitamin D-dependent calcium-binding protein, avian-type

Application Details

Application Notes:	Western blotting: 0.5-2 µg/mL Immunohistochemistry: 5-20 µg/mL Immunocytochemistry: 5-20 µg/mL Optimal working dilutions must be determined by end user.
Comment:	The thermal stability is described by the loss rate. The loss rate was determined by accelerated thermal degradation test, that is, incubate the protein at 37°C for 48h, and no obvious degradation and precipitation were observed. The loss rate is less than 5% within the expiration date under appropriate storage condition.
Restrictions:	For Research Use only

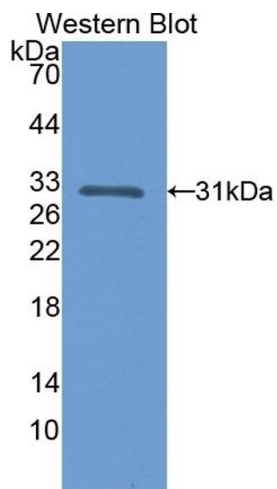
Handling

Format:	Liquid
Buffer:	0.01M PBS, pH 7.4, containing 0.05 % Proclin-300, 50 % glycerol.
Preservative:	ProClin
Precaution of Use:	This product contains ProClin: a POISONOUS AND HAZARDOUS SUBSTANCE which should be handled by trained staff only.
Storage:	4 °C, -20 °C
Storage Comment:	Store at 4°C for frequent use. Stored at -20°C in a manual defrost freezer for two year without detectable loss of activity. Avoid repeated freeze-thaw cycles.
Expiry Date:	24 months



Immunohistochemistry

Image 1. Detection of CALB in Human Kidney Tissue using Polyclonal Antibody to Calbindin (CALB)



Western Blotting

Image 2. Detection of Recombinant CALB, Rat using Polyclonal Antibody to Calbindin (CALB)