

Datasheet for ABIN7436306
anti-Lipin 1 antibody (AA 729-924)

3 Images

[Go to Product page](#)

Overview

Quantity:	100 µL
Target:	Lipin 1 (LPIN1)
Binding Specificity:	AA 729-924
Reactivity:	Rat
Host:	Rabbit
Clonality:	Polyclonal
Conjugate:	This Lipin 1 antibody is un-conjugated
Application:	Western Blotting (WB), Immunohistochemistry (IHC), Immunoprecipitation (IP), Immunocytochemistry (ICC)

Product Details

Purpose:	Polyclonal Antibody to Lipin 1 (LPIN1)
Immunogen:	Recombinant Lipin 1 (LPIN1) corresponding to Thr729~Ala924 with N-terminal His Tag
Isotype:	IgG
Specificity:	The antibody is a rabbit polyclonal antibody raised against LPIN1. It has been selected for its ability to recognize LPIN1 in immunohistochemical staining and western blotting.
Purification:	Antigen-specific affinity chromatography followed by Protein A affinity chromatography

Target Details

Target:	Lipin 1 (LPIN1)
---------	-----------------

Target Details

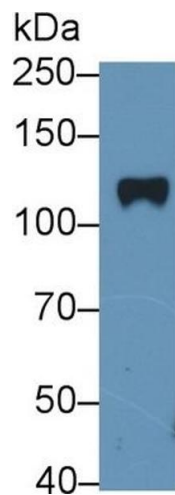
Alternative Name:	Lipin 1 (LPIN1 Products)
Background:	Phosphatidate phosphatase LPIN1
Pathways:	Monocarboxylic Acid Catabolic Process

Application Details

Application Notes:	Western blotting: 0.5-2 µg/mL Immunohistochemistry: 5-20 µg/mL Immunocytochemistry: 5-20 µg/mL Optimal working dilutions must be determined by end user.
Comment:	The thermal stability is described by the loss rate. The loss rate was determined by accelerated thermal degradation test, that is, incubate the protein at 37°C for 48h, and no obvious degradation and precipitation were observed. The loss rate is less than 5% within the expiration date under appropriate storage condition.
Restrictions:	For Research Use only

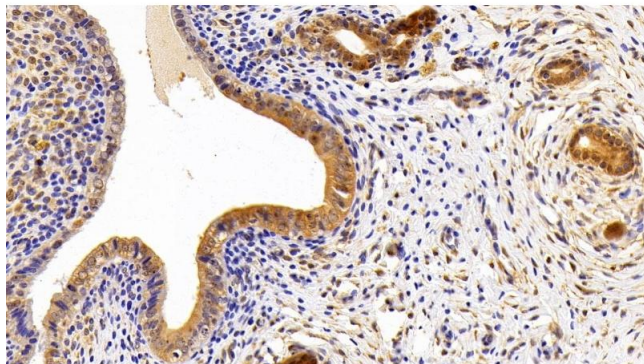
Handling

Format:	Liquid
Buffer:	0.01M PBS, pH 7.4, containing 0.05 % Proclin-300, 50 % glycerol.
Preservative:	ProClin
Precaution of Use:	This product contains ProClin: a POISONOUS AND HAZARDOUS SUBSTANCE which should be handled by trained staff only.
Storage:	4 °C,-20 °C
Storage Comment:	Store at 4°C for frequent use. Stored at -20°C in a manual defrost freezer for two year without detectable loss of activity. Avoid repeated freeze-thaw cycles.
Expiry Date:	24 months



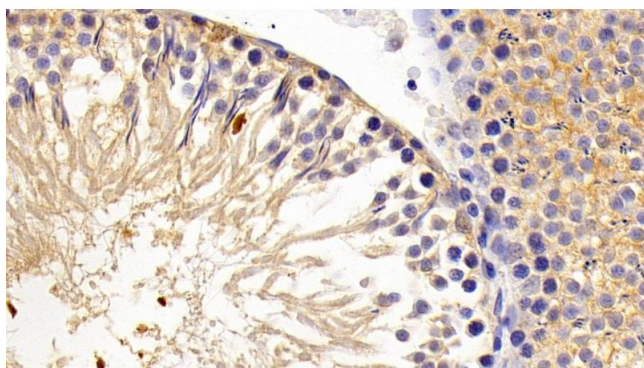
Western Blotting

Image 1. Detection of LPIN1 in Jurkat cell lysate using Polyclonal Antibody to Lipin 1 (LPIN1)



Immunohistochemistry

Image 2. Detection of LPIN1 in Rat Uterus Tissue using Polyclonal Antibody to Lipin 1 (LPIN1)



Immunohistochemistry

Image 3. Detection of LPIN1 in Rat Testis Tissue using Polyclonal Antibody to Lipin 1 (LPIN1)