



[Go to Product page](#)

Datasheet for ABIN7436336
anti-CLCA1 antibody (AA 416-670)

3 Images

Overview

Quantity:	100 µL
Target:	CLCA1
Binding Specificity:	AA 416-670
Reactivity:	Human
Host:	Rabbit
Clonality:	Polyclonal
Conjugate:	This CLCA1 antibody is un-conjugated
Application:	Western Blotting (WB), Immunohistochemistry (IHC), Immunocytochemistry (ICC), Immunoprecipitation (IP)

Product Details

Purpose:	Polyclonal Antibody to Chloride Channel Accessory 1 (CLCA1)
Immunogen:	Recombinant Chloride Channel Accessory 1 (CLCA1) corresponding to Asn416~Arg670 (Accession # A8K7I4)
Isotype:	IgG
Specificity:	The antibody is a rabbit polyclonal antibody raised against CLCA1. It has been selected for its ability to recognize CLCA1 in immunohistochemical staining and western blotting.
Cross-Reactivity:	Pig
Purification:	Antigen-specific affinity chromatography followed by Protein A affinity chromatography

Target Details

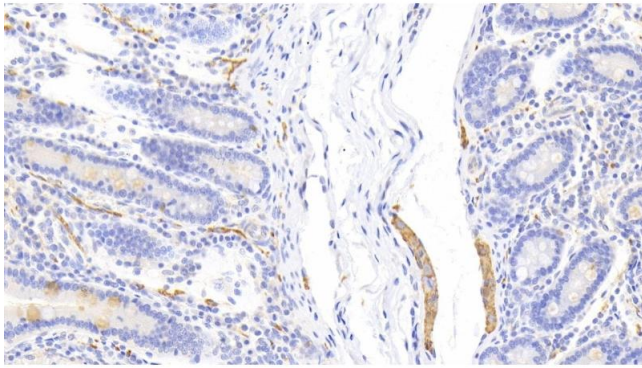
Target:	CLCA1
Alternative Name:	Chloride Channel Accessory 1 (CLCA1 Products)
Background:	CaCC1, CLCRG1, Chloride Channel, Calcium Activated, Family Member 1, Calcium-activated chloride channel protein 1

Application Details

Application Notes:	Western blotting: 0.5-2 µg/mL 1:250-1000 Immunohistochemistry: 5-20 µg/mL 1:25-100 Immunocytochemistry: 5-20 µg/mL 1:25-100 Optimal working dilutions must be determined by end user.
Comment:	The thermal stability is described by the loss rate. The loss rate was determined by accelerated thermal degradation test, that is, incubate the protein at 37°C for 48h, and no obvious degradation and precipitation were observed. The loss rate is less than 5% within the expiration date under appropriate storage condition.
Restrictions:	For Research Use only

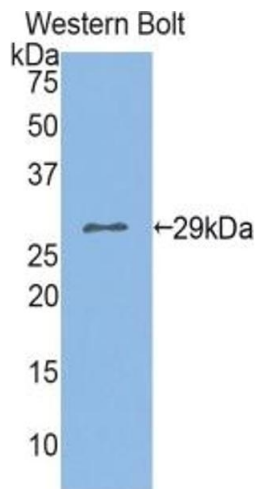
Handling

Format:	Liquid
Buffer:	PBS, pH 7.4, containing 0.02 % Sodium azide, 50 % glycerol.
Preservative:	Sodium azide
Precaution of Use:	This product contains Sodium azide: a POISONOUS AND HAZARDOUS SUBSTANCE which should be handled by trained staff only.
Storage:	4 °C, -20 °C
Storage Comment:	Store at 4°C for frequent use. Stored at -20°C in a manual defrost freezer for two year without detectable loss of activity. Avoid repeated freeze-thaw cycles.
Expiry Date:	24 months



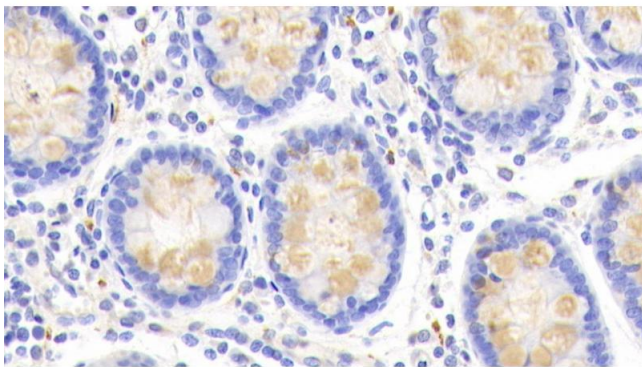
Immunohistochemistry

Image 1. Detection of CLCA1 in Human Small intestine Tissue using Polyclonal Antibody to Chloride Channel Accessory 1 (CLCA1)



Western Blotting

Image 2. Detection of Recombinant CLCA1, Human using Polyclonal Antibody to Chloride Channel Accessory 1 (CLCA1)



Immunohistochemistry

Image 3. Detection of CLCA1 in Human Colon Tissue using Polyclonal Antibody to Chloride Channel Accessory 1 (CLCA1)