

Datasheet for ABIN7436372
anti-WISP1 antibody (AA 213-350)

5 Images

[Go to Product page](#)

Overview

Quantity:	100 µL
Target:	WISP1
Binding Specificity:	AA 213-350
Reactivity:	Mouse
Host:	Rabbit
Clonality:	Polyclonal
Conjugate:	This WISP1 antibody is un-conjugated
Application:	Western Blotting (WB), Immunohistochemistry (IHC), Immunoprecipitation (IP), Immunocytochemistry (ICC)

Product Details

Purpose:	Polyclonal Antibody to WNT1 Inducible Signaling Pathway Protein 1 (WISP1)
Immunogen:	Recombinant WNT1 Inducible Signaling Pathway Protein 1 (WISP1) corresponding to Tyr213~Asn350
Isotype:	IgG
Specificity:	The antibody is a rabbit polyclonal antibody raised against WISP1. It has been selected for its ability to recognize WISP1 in immunohistochemical staining and western blotting.
Cross-Reactivity:	Rat
Purification:	Antigen-specific affinity chromatography followed by Protein A affinity chromatography

Target Details

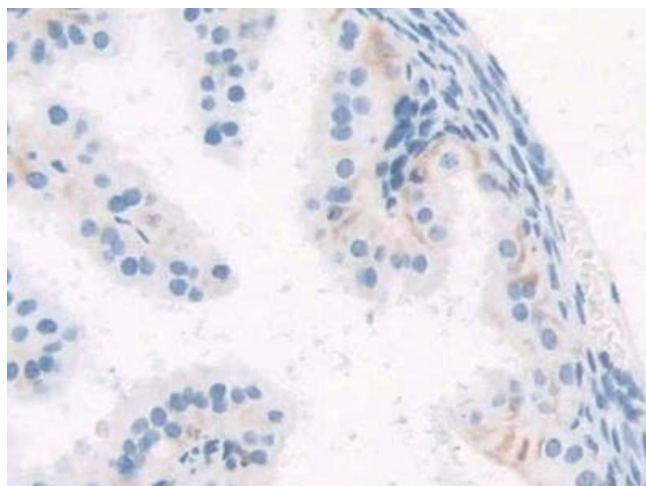
Target:	WISP1
Alternative Name:	WNT1 Inducible Signaling Pathway Protein 1 (WISP1 Products)
Background:	CCN4, WISP1c, WISP1i, WISP1tc, CCN family member 4, Wnt-1-induced secreted protein
Pathways:	WNT Signaling , Growth Factor Binding

Application Details

Application Notes:	Western blotting: 0.5-2 µg/mL 1:280-1100 Immunohistochemistry: 5-20 µg/mL 1:28-110 Immunocytochemistry: 5-20 µg/mL 1:28-110 Optimal working dilutions must be determined by end user.
Comment:	The thermal stability is described by the loss rate. The loss rate was determined by accelerated thermal degradation test, that is, incubate the protein at 37°C for 48h, and no obvious degradation and precipitation were observed. The loss rate is less than 5% within the expiration date under appropriate storage condition.
Restrictions:	For Research Use only

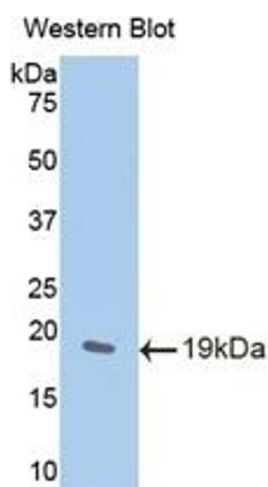
Handling

Format:	Liquid
Buffer:	PBS, pH 7.4, containing 0.02 % Sodium azide, 50 % glycerol.
Preservative:	Sodium azide
Precaution of Use:	This product contains Sodium azide: a POISONOUS AND HAZARDOUS SUBSTANCE which should be handled by trained staff only.
Storage:	4 °C, -20 °C
Storage Comment:	Store at 4°C for frequent use. Stored at -20°C in a manual defrost freezer for two year without detectable loss of activity. Avoid repeated freeze-thaw cycles.
Expiry Date:	24 months



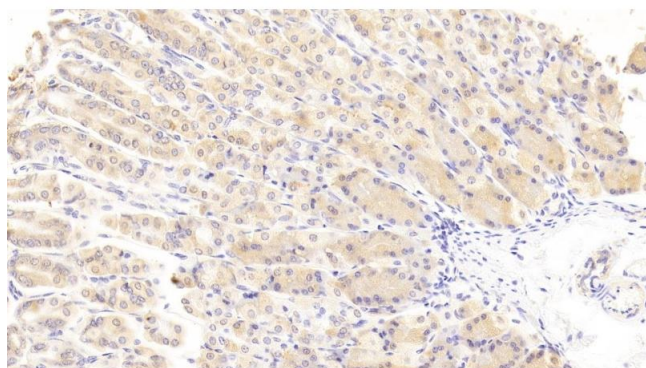
Immunohistochemistry

Image 1. Detection of WISP1 in Mouse Oviduct Tissue using Polyclonal Antibody to WNT1 Inducible Signaling Pathway Protein 1 (WISP1)



Western Blotting

Image 2. Detection of Recombinant WISP1, Mouse using Polyclonal Antibody to WNT1 Inducible Signaling Pathway Protein 1 (WISP1)



Immunohistochemistry

Image 3. Detection of WISP1 in Mouse Stomach Tissue using Polyclonal Antibody to WNT1 Inducible Signaling Pathway Protein 1 (WISP1)

Please check the [product details page](#) for more images. Overall 5 images are available for ABIN7436372.