

Datasheet for ABIN7436405  
**anti-SULF2 antibody (AA 337-649)**[Go to Product page](#)

## 3 Images

## Overview

Quantity:	100 µL
Target:	SULF2
Binding Specificity:	AA 337-649
Reactivity:	Human
Host:	Rabbit
Clonality:	Polyclonal
Conjugate:	This SULF2 antibody is un-conjugated
Application:	Western Blotting (WB), Immunohistochemistry (IHC), Immunoprecipitation (IP), Immunocytochemistry (ICC)

## Product Details

Purpose:	Polyclonal Antibody to Sulfatase 2 (SULF2)
Immunogen:	Recombinant Sulfatase 2 (SULF2) corresponding to Phe337~Arg649 with N-terminal His and GST Tag
Isotype:	IgG
Specificity:	The antibody is a rabbit polyclonal antibody raised against SULF2. It has been selected for its ability to recognize SULF2 in immunohistochemical staining and western blotting.
Cross-Reactivity:	Mouse, Pig, Rat
Purification:	Antigen-specific affinity chromatography followed by Protein A affinity chromatography

## Target Details

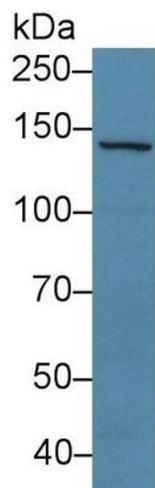
Target:	SULF2
Alternative Name:	Sulfatase 2 ( <a href="#">SULF2 Products</a> )
Background:	HSULF-2, Extracellular sulfatase Sulf-2

## Application Details

Application Notes:	Western blotting: 0.5-5 µg/mL Immunohistochemistry: 5-50 µg/mL Immunocytochemistry: 5-50 µg/mL Optimal working dilutions must be determined by end user.
Comment:	The thermal stability is described by the loss rate. The loss rate was determined by accelerated thermal degradation test, that is, incubate the protein at 37°C for 48h, and no obvious degradation and precipitation were observed. The loss rate is less than 5% within the expiration date under appropriate storage condition.
Restrictions:	For Research Use only

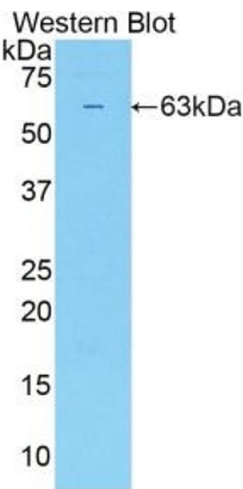
## Handling

Format:	Liquid
Buffer:	PBS, pH 7.4, containing 0.02 % Sodium azide, 50 % glycerol.
Preservative:	Sodium azide
Precaution of Use:	This product contains Sodium azide: a POISONOUS AND HAZARDOUS SUBSTANCE which should be handled by trained staff only.
Storage:	4 °C,-20 °C
Storage Comment:	Store at 4°C for frequent use. Stored at -20°C in a manual defrost freezer for two year without detectable loss of activity. Avoid repeated freeze-thaw cycles.
Expiry Date:	24 months



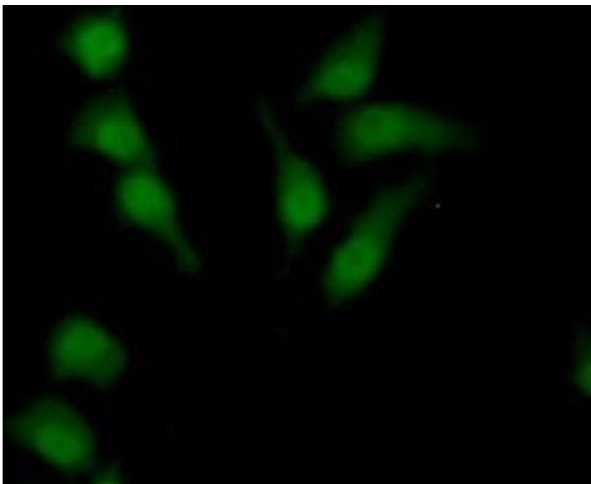
Western Blotting

**Image 1.** Detection of SULF2 in Porcine Liver lysate using Polyclonal Antibody to Sulfatase 2 (SULF2)



Western Blotting

**Image 2.** Detection of Recombinant SULF2, Human using Polyclonal Antibody to Sulfatase 2 (SULF2)



Immunohistochemistry

**Image 3.** Detection of SULF2 in Human HepG2 Cells using Polyclonal Antibody to Sulfatase 2 (SULF2)