

Datasheet for ABIN7436414  
**anti-SPTLC1 antibody (AA 143-473)**

## 4 Images

[Go to Product page](#)

## Overview

Quantity:	100 µL
Target:	SPTLC1
Binding Specificity:	AA 143-473
Reactivity:	Mouse
Host:	Rabbit
Clonality:	Polyclonal
Conjugate:	This SPTLC1 antibody is un-conjugated
Application:	Western Blotting (WB), Immunohistochemistry (IHC), Immunoprecipitation (IP), Immunocytochemistry (ICC)

## Product Details

Purpose:	Polyclonal Antibody to Serine Palmitoyltransferase, Long Chain Base Subunit 1 (SPTLC1)
Immunogen:	Recombinant Serine Palmitoyltransferase, Long Chain Base Subunit 1 (SPTLC1) corresponding to Asp143~Leu473 with N-terminal His Tag
Isotype:	IgG
Specificity:	The antibody is a rabbit polyclonal antibody raised against SPTLC1. It has been selected for its ability to recognize SPTLC1 in immunohistochemical staining and western blotting.
Cross-Reactivity:	Human, Rat
Purification:	Antigen-specific affinity chromatography followed by Protein A affinity chromatography

## Target Details

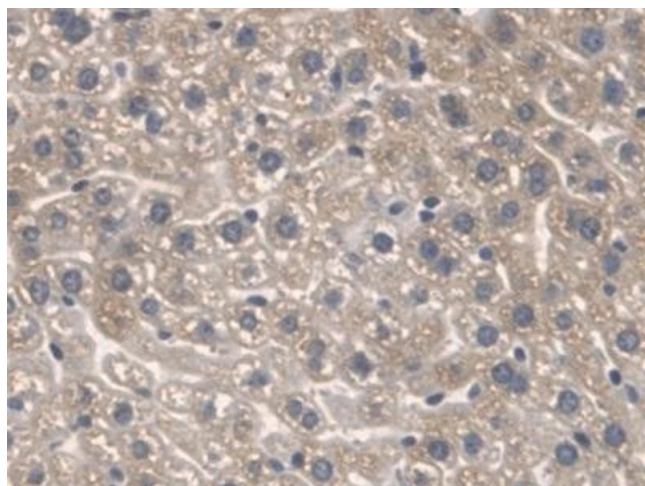
Target:	SPTLC1
Alternative Name:	Serine Palmitoyltransferase, Long Chain Base Subunit 1 ( <a href="#">SPTLC1 Products</a> )
Background:	HSAN, HSAN1, HSN1, LBC1, LCB1, SPT1, SPTI, Hereditary Sensory Neuropathy, Type 1, Long chain base biosynthesis protein 1, Serine-palmitoyl-CoA transferase 1

## Application Details

Application Notes:	Western blotting: 0.5-2 µg/mL 1:250-1000 Immunohistochemistry: 5-20 µg/mL 1:25-100 Immunocytochemistry: 5-20 µg/mL 1:25-100 Optimal working dilutions must be determined by end user.
Comment:	The thermal stability is described by the loss rate. The loss rate was determined by accelerated thermal degradation test, that is, incubate the protein at 37°C for 48h, and no obvious degradation and precipitation were observed. The loss rate is less than 5% within the expiration date under appropriate storage condition.
Restrictions:	For Research Use only

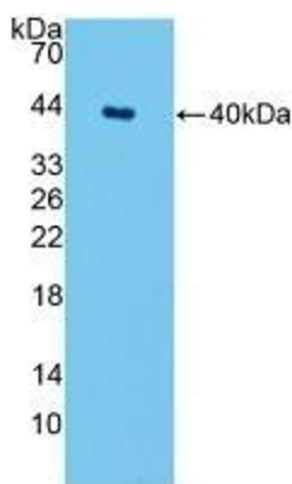
## Handling

Format:	Liquid
Buffer:	PBS, pH 7.4, containing 0.02 % Sodium azide, 50 % glycerol.
Preservative:	Sodium azide
Precaution of Use:	This product contains Sodium azide: a POISONOUS AND HAZARDOUS SUBSTANCE which should be handled by trained staff only.
Storage:	4 °C, -20 °C
Storage Comment:	Store at 4°C for frequent use. Stored at -20°C in a manual defrost freezer for two year without detectable loss of activity. Avoid repeated freeze-thaw cycles.
Expiry Date:	24 months



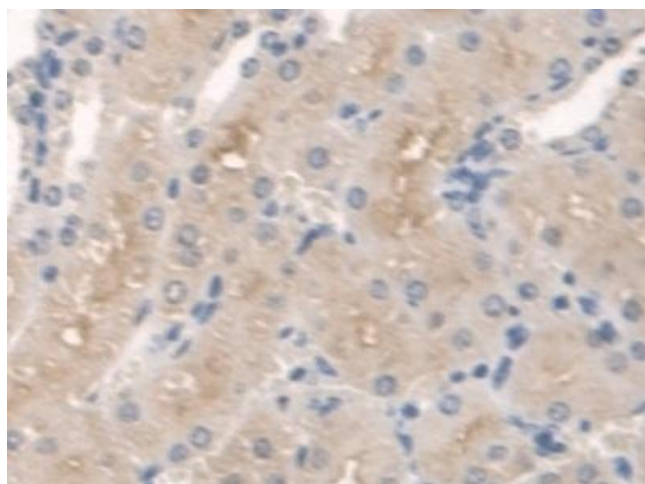
#### Immunohistochemistry

**Image 1.** Detection of SPTLC1 in Mouse Liver Tissue using Polyclonal Antibody to Serine Palmitoyltransferase, Long Chain Base Subunit 1 (SPTLC1)



#### Western Blotting

**Image 2.** Detection of Recombinant SPTLC1, Mouse using Polyclonal Antibody to Serine Palmitoyltransferase, Long Chain Base Subunit 1 (SPTLC1)



#### Immunohistochemistry

**Image 3.** Detection of SPTLC1 in Mouse Kidney Tissue using Polyclonal Antibody to Serine Palmitoyltransferase, Long Chain Base Subunit 1 (SPTLC1)

Please check the [product details page](#) for more images. Overall 4 images are available for ABIN7436414.