



Datasheet for ABIN7436444  
**anti-PRM2 antibody (AA 2-100)**



[Go to Product page](#)

2 Images

Overview

Quantity:	100 µL
Target:	PRM2
Binding Specificity:	AA 2-100
Reactivity:	Human
Host:	Rabbit
Clonality:	Polyclonal
Conjugate:	This PRM2 antibody is un-conjugated
Application:	Immunohistochemistry (IHC), Immunoprecipitation (IP), Western Blotting (WB), Immunocytochemistry (ICC)

Product Details

Purpose:	Polyclonal Antibody to Protamine 2 (PRM2)
Immunogen:	Recombinant Protamine 2 (PRM2) corresponding to Val2~Arg100 with N-terminal His Tag
Isotype:	IgG
Specificity:	The antibody is a rabbit polyclonal antibody raised against PRM2. It has been selected for its ability to recognize PRM2 in immunohistochemical staining and western blotting.
Purification:	Antigen-specific affinity chromatography followed by Protein A affinity chromatography

Target Details

Target:	PRM2
---------	------

## Target Details

---

Alternative Name:	Protamine 2 ( <a href="#">PRM2 Products</a> )
Background:	CT94.2, Cancer/Testis Antigen Family 94,Member 2, Sperm histone P2, Sperm protamine P2

## Application Details

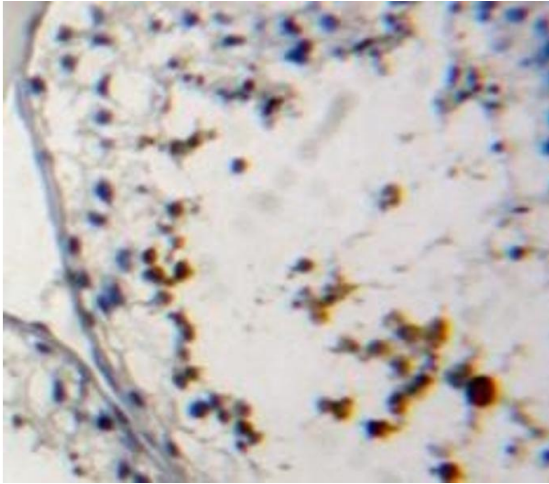
---

Application Notes:	Western blotting: 0.5-2 µg/mL Immunohistochemistry: 5-20 µg/mL Immunocytochemistry: 5-20 µg/mL Optimal working dilutions must be determined by end user.
Comment:	The thermal stability is described by the loss rate. The loss rate was determined by accelerated thermal degradation test, that is, incubate the protein at 37°C for 48h, and no obvious degradation and precipitation were observed. The loss rate is less than 5% within the expiration date under appropriate storage condition.
Restrictions:	For Research Use only

## Handling

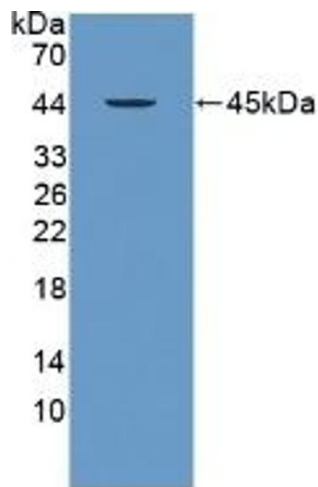
---

Format:	Liquid
Buffer:	0.01M PBS, pH 7.4, containing 0.05 % Proclin-300, 50 % glycerol.
Preservative:	ProClin
Precaution of Use:	This product contains ProClin: a POISONOUS AND HAZARDOUS SUBSTANCE which should be handled by trained staff only.
Storage:	4 °C,-20 °C
Storage Comment:	Store at 4°C for frequent use. Stored at -20°C in a manual defrost freezer for two year without detectable loss of activity. Avoid repeated freeze-thaw cycles.
Expiry Date:	24 months



### Immunohistochemistry

**Image 1.** #VALUE!



### Western Blotting

**Image 2.** Detection of Recombinant PRM2, Human using Polyclonal Antibody to Protamine 2 (PRM2)