

Datasheet for ABIN7436534  
**anti-LRRK2 antibody (AA 1479-1729)**

## 3 Images

[Go to Product page](#)

## Overview

Quantity:	100 µL
Target:	LRRK2
Binding Specificity:	AA 1479-1729
Reactivity:	Human
Host:	Rabbit
Clonality:	Polyclonal
Conjugate:	This LRRK2 antibody is un-conjugated
Application:	Western Blotting (WB), Immunohistochemistry (IHC), Immunocytochemistry (ICC), Immunoprecipitation (IP)

## Product Details

Purpose:	Polyclonal Antibody to Leucine Rich Repeat Kinase 2 (LRRK2)
Immunogen:	Recombinant Leucine Rich Repeat Kinase 2 (LRRK2) corresponding to Phe1479~Pro1729 with N-terminal His Tag
Isotype:	IgG
Specificity:	The antibody is a rabbit polyclonal antibody raised against LRRK2. It has been selected for its ability to recognize LRRK2 in immunohistochemical staining and western blotting.
Cross-Reactivity:	Mouse, Rat
Purification:	Antigen-specific affinity chromatography followed by Protein A affinity chromatography

## Target Details

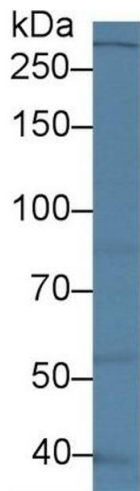
Target:	LRRK2
Alternative Name:	Leucine Rich Repeat Kinase 2 ( <a href="#">LRRK2 Products</a> )
Background:	AURA17, PARK8, RIPK7, ROCO2, Dardarin , Parkinson Disease(Autosomal Dominant) <sup>8</sup> , Leucine-rich repeat serine/threonine-protein kinase 2
Pathways:	<a href="#">Regulation of G-Protein Coupled Receptor Protein Signaling</a> , <a href="#">Skeletal Muscle Fiber Development</a>

## Application Details

Application Notes:	Western blotting: 0.5-2 µg/mL 1:500-2000 Immunohistochemistry: 5-20 µg/mL 1:50-200 Immunocytochemistry: 5-20 µg/mL 1:50-200 Optimal working dilutions must be determined by end user.
Comment:	The thermal stability is described by the loss rate. The loss rate was determined by accelerated thermal degradation test, that is, incubate the protein at 37°C for 48h, and no obvious degradation and precipitation were observed. The loss rate is less than 5% within the expiration date under appropriate storage condition.
Restrictions:	For Research Use only

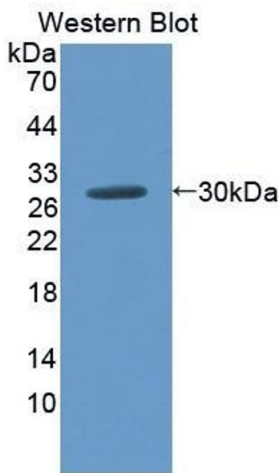
## Handling

Format:	Liquid
Buffer:	0.01M PBS, pH 7.4, containing 0.05 % Proclin-300, 50 % glycerol.
Preservative:	ProClin
Precaution of Use:	This product contains ProClin: a POISONOUS AND HAZARDOUS SUBSTANCE which should be handled by trained staff only.
Storage:	4 °C,-20 °C
Storage Comment:	Store at 4°C for frequent use. Stored at -20°C in a manual defrost freezer for two year without detectable loss of activity. Avoid repeated freeze-thaw cycles.
Expiry Date:	24 months



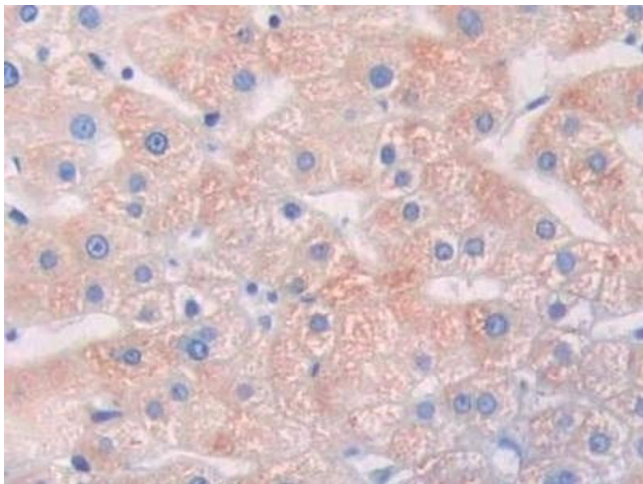
#### Western Blotting

**Image 1.** Detection of LRRK2 in Human Lung lysate using Polyclonal Antibody to Leucine Rich Repeat Kinase 2 (LRRK2)



#### Western Blotting

**Image 2.** Detection of Recombinant LRRK2, Human using Polyclonal Antibody to Leucine Rich Repeat Kinase 2 (LRRK2)



#### Immunohistochemistry

**Image 3.** Detection of LRRK2 in Human Liver Tissue using Polyclonal Antibody to Leucine Rich Repeat Kinase 2 (LRRK2)