

Datasheet for ABIN7436543

anti-Klotho beta antibody (AA 846-965)

5 Images

[Go to Product page](#)

Overview

Quantity:	100 µL
Target:	Klotho beta (KLB)
Binding Specificity:	AA 846-965
Reactivity:	Mouse
Host:	Rabbit
Clonality:	Polyclonal
Conjugate:	This Klotho beta antibody is un-conjugated
Application:	Western Blotting (WB), Immunohistochemistry (IHC), Immunoprecipitation (IP), Immunocytochemistry (ICC)

Product Details

Purpose:	Polyclonal Antibody to Klotho Beta (KLb)
Immunogen:	Recombinant Klotho Beta (KLb) corresponding to Gln846~Leu965 (Accession # Q99N32)
Isotype:	IgG
Specificity:	The antibody is a rabbit polyclonal antibody raised against KLb. It has been selected for its ability to recognize KLb in immunohistochemical staining and western blotting.
Cross-Reactivity:	Rat
Purification:	Antigen-specific affinity chromatography followed by Protein A affinity chromatography

Target Details

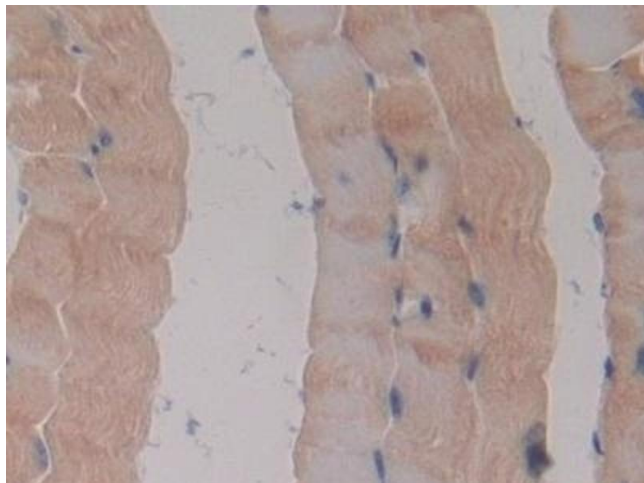
Target:	Klotho beta (KLB)
Alternative Name:	Klotho Beta (KLB Products)
Background:	Klotho beta-like protein
Pathways:	Fc-epsilon Receptor Signaling Pathway , EGFR Signaling Pathway , Neurotrophin Signaling Pathway , Growth Factor Binding

Application Details

Application Notes:	Western blotting: 0.5-2 µg/mL Immunohistochemistry: 5-20 µg/mL Immunocytochemistry: 5-20 µg/mL Optimal working dilutions must be determined by end user.
Comment:	The thermal stability is described by the loss rate. The loss rate was determined by accelerated thermal degradation test, that is, incubate the protein at 37°C for 48h, and no obvious degradation and precipitation were observed. The loss rate is less than 5% within the expiration date under appropriate storage condition.
Restrictions:	For Research Use only

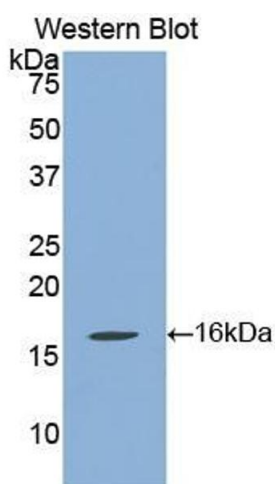
Handling

Format:	Liquid
Buffer:	PBS, pH 7.4, containing 0.02 % Sodium azide, 50 % glycerol.
Preservative:	Sodium azide
Precaution of Use:	This product contains Sodium azide: a POISONOUS AND HAZARDOUS SUBSTANCE which should be handled by trained staff only.
Storage:	4 °C,-20 °C
Storage Comment:	Store at 4°C for frequent use. Stored at -20°C in a manual defrost freezer for two year without detectable loss of activity. Avoid repeated freeze-thaw cycles.
Expiry Date:	24 months



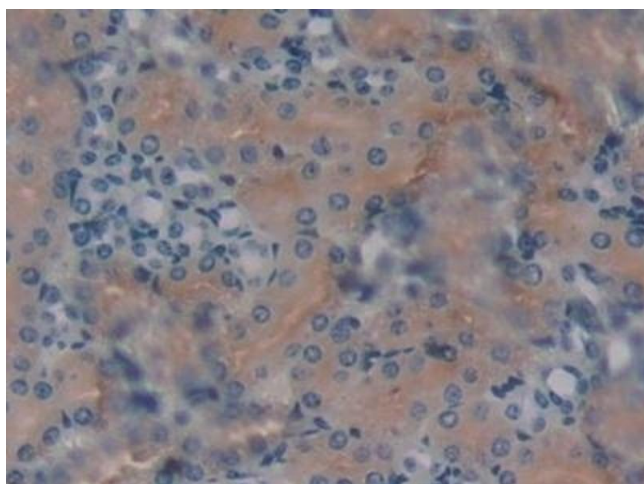
Immunohistochemistry

Image 1. Detection of KLb in Mouse Skeletal muscle Tissue using Polyclonal Antibody to Klotho Beta (KLb)



Western Blotting

Image 2. Detection of Recombinant KLb, Mouse using Polyclonal Antibody to Klotho Beta (KLb)



Immunohistochemistry

Image 3. Detection of KLb in Mouse Kidney Tissue using Polyclonal Antibody to Klotho Beta (KLb)

Please check the [product details page](#) for more images. Overall 5 images are available for ABIN7436543.