

Datasheet for ABIN7436591
anti-GPLD1 antibody (AA 496-840)

6 Images

[Go to Product page](#)

Overview

Quantity:	100 µL
Target:	GPLD1
Binding Specificity:	AA 496-840
Reactivity:	Human
Host:	Rabbit
Clonality:	Polyclonal
Conjugate:	This GPLD1 antibody is un-conjugated
Application:	Western Blotting (WB), Immunohistochemistry (IHC), Immunoprecipitation (IP), Immunocytochemistry (ICC)

Product Details

Purpose:	Polyclonal Antibody to Glycosylphosphatidylinositol Specific Phospholipase D1 (GPLD1)
Immunogen:	Recombinant Glycosylphosphatidylinositol Specific Phospholipase D1 (GPLD1) corresponding to Met496~Asp840 with N-terminal His Tag
Isotype:	IgG
Specificity:	The antibody is a rabbit polyclonal antibody raised against GPLD1. It has been selected for its ability to recognize GPLD1 in immunohistochemical staining and western blotting.
Purification:	Antigen-specific affinity chromatography followed by Protein A affinity chromatography

Target Details

Target:	GPLD1
---------	-------

Target Details

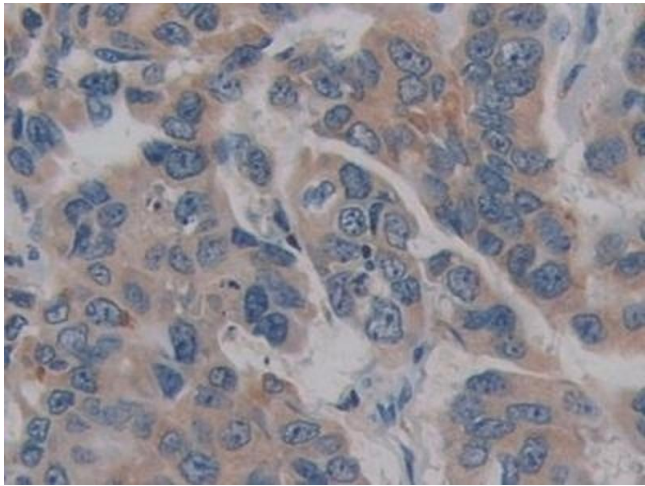
Alternative Name:	Glycosylphosphatidylinositol Specific Phospholipase D1 (GPLD1 Products)
Background:	GPIPLD, GPIPLDM, PIGPLD, PIGPLD1, Glycoprotein phospholipase D, Glycosyl-phosphatidylinositol-specific phospholipase D
Pathways:	Inositol Metabolic Process , Regulation of Carbohydrate Metabolic Process

Application Details

Application Notes:	Western blotting: 0.5-2 µg/mL Immunohistochemistry: 5-20 µg/mL Immunocytochemistry: 5-20 µg/mL Optimal working dilutions must be determined by end user.
Comment:	The thermal stability is described by the loss rate. The loss rate was determined by accelerated thermal degradation test, that is, incubate the protein at 37°C for 48h, and no obvious degradation and precipitation were observed. The loss rate is less than 5% within the expiration date under appropriate storage condition.
Restrictions:	For Research Use only

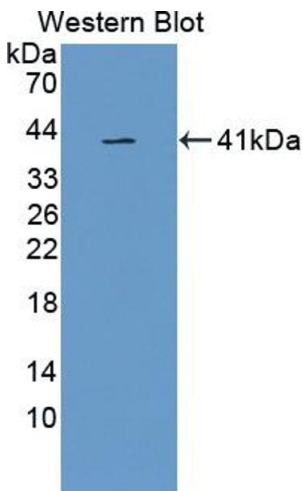
Handling

Format:	Liquid
Buffer:	0.01M PBS, pH 7.4, containing 0.05 % Proclin-300, 50 % glycerol.
Preservative:	ProClin
Precaution of Use:	This product contains ProClin: a POISONOUS AND HAZARDOUS SUBSTANCE which should be handled by trained staff only.
Storage:	4 °C, -20 °C
Storage Comment:	Store at 4°C for frequent use. Stored at -20°C in a manual defrost freezer for two year without detectable loss of activity. Avoid repeated freeze-thaw cycles.
Expiry Date:	24 months



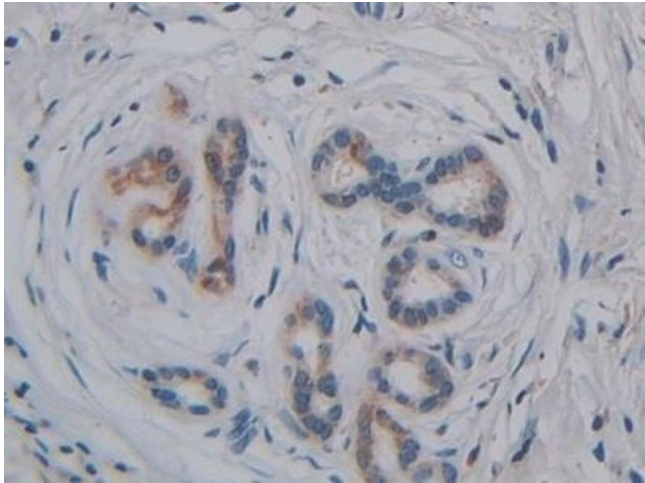
Immunohistochemistry

Image 1. Detection of GPLD1 in Human Breast cancer Tissue using Polyclonal Antibody to Glycosylphosphatidylinositol Specific Phospholipase D1 (GPLD1)



Western Blotting

Image 2. Detection of Recombinant GPLD1, Human using Polyclonal Antibody to Glycosylphosphatidylinositol Specific Phospholipase D1 (GPLD1)



Immunohistochemistry

Image 3. Detection of GPLD1 in Human Pancreatic cancer Tissue using Polyclonal Antibody to Glycosylphosphatidylinositol Specific Phospholipase D1 (GPLD1)

Please check the [product details page](#) for more images. Overall 6 images are available for ABIN7436591.