

Datasheet for ABIN7436600

anti-Glutaminase antibody (AA 31-253)

6 Images

[Go to Product page](#)

Overview

Quantity:	100 µL
Target:	Glutaminase (GLS)
Binding Specificity:	AA 31-253
Reactivity:	Mouse
Host:	Rabbit
Clonality:	Polyclonal
Conjugate:	This Glutaminase antibody is un-conjugated
Application:	Western Blotting (WB), Immunohistochemistry (IHC), Immunoprecipitation (IP), Immunocytochemistry (ICC)

Product Details

Purpose:	Polyclonal Antibody to Glutaminase (GLS)
Immunogen:	Recombinant Glutaminase (GLS) corresponding to Leu31~Asp253 with N-terminal His Tag
Isotype:	IgG
Specificity:	The antibody is a rabbit polyclonal antibody raised against GLS. It has been selected for its ability to recognize GLS in immunohistochemical staining and western blotting.
Cross-Reactivity:	Human, Rat
Purification:	Antigen-specific affinity chromatography followed by Protein A affinity chromatography

Target Details

Target:	Glutaminase (GLS)
Alternative Name:	Glutaminase (GLS Products)
Background:	GLS1, Glutaminase kidney isoform, mitochondrial, K-glutaminase, L-glutamine amidohydrolase
Pathways:	Feeding Behaviour , Dicarboxylic Acid Transport , Warburg Effect

Application Details

Application Notes:	Western blotting: 0.5-2 µg/mL Immunohistochemistry: 5-20 µg/mL Immunocytochemistry: 5-20 µg/mL Optimal working dilutions must be determined by end user.
Comment:	The thermal stability is described by the loss rate. The loss rate was determined by accelerated thermal degradation test, that is, incubate the protein at 37°C for 48h, and no obvious degradation and precipitation were observed. The loss rate is less than 5% within the expiration date under appropriate storage condition.
Restrictions:	For Research Use only

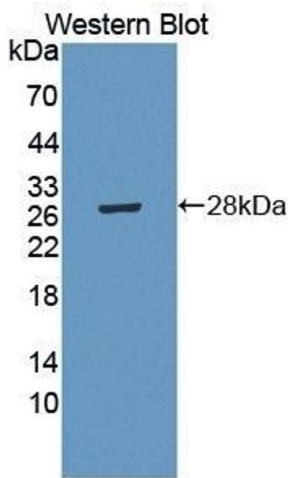
Handling

Format:	Liquid
Buffer:	PBS, pH 7.4, containing 0.02 % Sodium azide, 50 % glycerol.
Preservative:	Sodium azide
Precaution of Use:	This product contains Sodium azide: a POISONOUS AND HAZARDOUS SUBSTANCE which should be handled by trained staff only.
Storage:	4 °C, -20 °C
Storage Comment:	Store at 4°C for frequent use. Stored at -20°C in a manual defrost freezer for two year without detectable loss of activity. Avoid repeated freeze-thaw cycles.
Expiry Date:	24 months



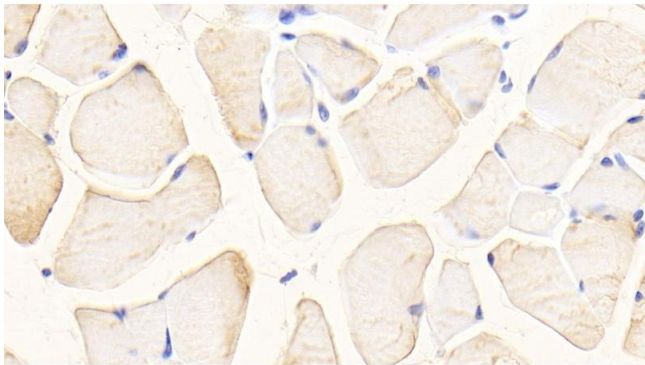
Western Blotting

Image 1. Detection of GLS in Mouse Kidney lysate using Polyclonal Antibody to Glutaminase (GLS)



Western Blotting

Image 2. Detection of Recombinant GLS, Mouse using Polyclonal Antibody to Glutaminase (GLS)



Immunohistochemistry

Image 3. Detection of GLS in Mouse Skeletal muscle Tissue using Polyclonal Antibody to Glutaminase (GLS)

Please check the [product details page](#) for more images. Overall 6 images are available for ABIN7436600.