

Datasheet for ABIN7436708  
**anti-Beclin 1 antibody (AA 1-273)**

## 3 Images

[Go to Product page](#)

## Overview

Quantity:	100 µL
Target:	Beclin 1 (BECN1)
Binding Specificity:	AA 1-273
Reactivity:	Human
Host:	Rabbit
Clonality:	Polyclonal
Conjugate:	This Beclin 1 antibody is un-conjugated
Application:	Western Blotting (WB), Immunohistochemistry (IHC), Immunoprecipitation (IP), Immunocytochemistry (ICC)

## Product Details

Purpose:	Polyclonal Antibody to Beclin 1 (BECN1)
Immunogen:	Recombinant Beclin 1 (BECN1) corresponding to Met1~Thr273 (Accession # Q14457)
Isotype:	IgG
Specificity:	The antibody is a rabbit polyclonal antibody raised against BECN1. It has been selected for its ability to recognize BECN1 in immunohistochemical staining and western blotting.
Cross-Reactivity:	Cow, Dog, Goat, Mouse, Pig, Rat, Sheep
Purification:	Antigen-specific affinity chromatography followed by Protein A affinity chromatography

## Target Details

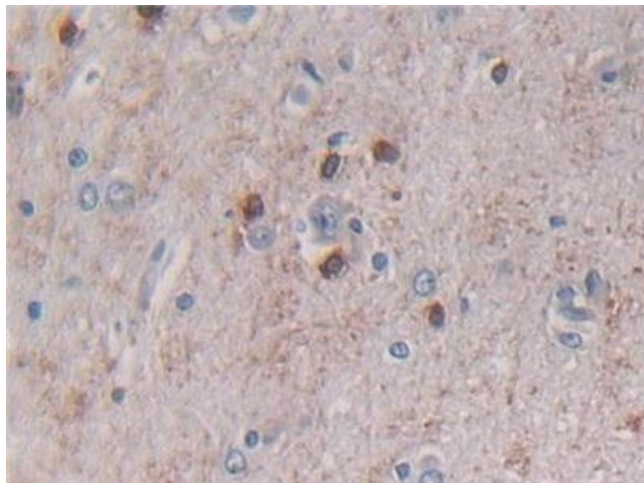
Target:	Beclin 1 (BECN1)
Alternative Name:	Beclin 1 ( <a href="#">BECN1 Products</a> )
Background:	ATG6, VPS30, Coiled-Coil, Myosin-Like BCL2 Interacting Protein, ATG6 Autophagy Related 6 Homolog
Pathways:	<a href="#">Autophagy</a>

## Application Details

Application Notes:	Western blotting: 0.3-3 µg/mL Immunohistochemistry: 5-30 µg/mL Immunocytochemistry: 5-30 µg/mL Optimal working dilutions must be determined by end user.
Comment:	The thermal stability is described by the loss rate. The loss rate was determined by accelerated thermal degradation test, that is, incubate the protein at 37°C for 48h, and no obvious degradation and precipitation were observed. The loss rate is less than 5% within the expiration date under appropriate storage condition.
Restrictions:	For Research Use only

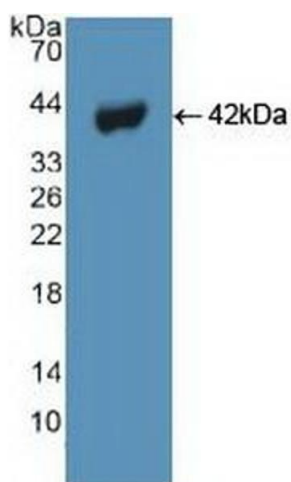
## Handling

Format:	Liquid
Buffer:	PBS, pH 7.4, containing 0.02 % Sodium azide, 50 % glycerol.
Preservative:	Sodium azide
Precaution of Use:	This product contains Sodium azide: a POISONOUS AND HAZARDOUS SUBSTANCE which should be handled by trained staff only.
Storage:	4 °C, -20 °C
Storage Comment:	Store at 4°C for frequent use. Stored at -20°C in a manual defrost freezer for two year without detectable loss of activity. Avoid repeated freeze-thaw cycles.
Expiry Date:	24 months



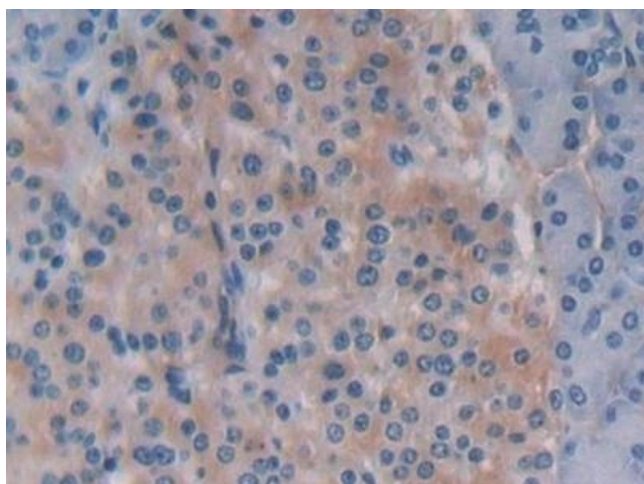
#### Immunohistochemistry

**Image 1.** Detection of BECN1 in Human Cerebrum Tissue using Polyclonal Antibody to Beclin 1 (BECN1)



#### Western Blotting

**Image 2.** Detection of Recombinant BECN1, Human using Polyclonal Antibody to Beclin 1 (BECN1)



#### Immunohistochemistry

**Image 3.** Detection of BECN1 in Human Pancreas Tissue using Polyclonal Antibody to Beclin 1 (BECN1)