



[Go to Product page](#)

Datasheet for ABIN7436750  
**anti-RS1 antibody (AA 24-224)**

2 Images

### Overview

Quantity:	100 µL
Target:	RS1
Binding Specificity:	AA 24-224
Reactivity:	Human
Host:	Rabbit
Clonality:	Polyclonal
Conjugate:	This RS1 antibody is un-conjugated
Application:	Immunohistochemistry (IHC), Western Blotting (WB), Immunoprecipitation (IP), Immunocytochemistry (ICC)

### Product Details

Purpose:	Polyclonal Antibody to Retinoschisin (RS)
Immunogen:	Recombinant Retinoschisin (RS) corresponding to Ser24~Ala224 with N-terminal His and GST Tag
Isotype:	IgG
Specificity:	The antibody is a rabbit polyclonal antibody raised against RS. It has been selected for its ability to recognize RS in immunohistochemical staining and western blotting.
Cross-Reactivity:	Mouse, Pig, Rat
Purification:	Antigen-specific affinity chromatography followed by Protein A affinity chromatography

## Target Details

---

Target:	RS1
Alternative Name:	Retinoschisin ( <a href="#">RS1 Products</a> )
Background:	RS1, XLRS1, Retinoschisis X-Linked, Juvenile 1, X-linked juvenile retinoschisis protein

## Application Details

---

Application Notes:	Western blotting: 0.5-2 µg/mL Immunohistochemistry: 5-20 µg/mL Immunocytochemistry: 5-20 µg/mL Optimal working dilutions must be determined by end user.
Comment:	The thermal stability is described by the loss rate. The loss rate was determined by accelerated thermal degradation test, that is, incubate the protein at 37°C for 48h, and no obvious degradation and precipitation were observed. The loss rate is less than 5% within the expiration date under appropriate storage condition.
Restrictions:	For Research Use only

## Handling

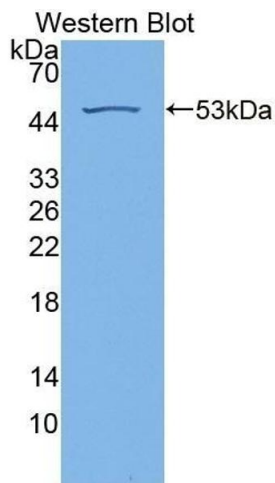
---

Format:	Liquid
Buffer:	PBS, pH 7.4, containing 0.02 % Sodium azide, 50 % glycerol.
Preservative:	Sodium azide
Precaution of Use:	This product contains Sodium azide: a POISONOUS AND HAZARDOUS SUBSTANCE which should be handled by trained staff only.
Storage:	4 °C, -20 °C
Storage Comment:	Store at 4°C for frequent use. Stored at -20°C in a manual defrost freezer for two year without detectable loss of activity. Avoid repeated freeze-thaw cycles.
Expiry Date:	24 months



#### Western Blotting

**Image 1.** Detection of RS in oricine Eye lysate using Polyclonal Antibody to Retinoschisin (RS)



#### Western Blotting

**Image 2.** Detection of Recombinant RS, Human using Polyclonal Antibody to Retinoschisin (RS)