

Datasheet for ABIN7436801
anti-TMEM27 antibody (AA 15-141)[Go to Product page](#)

2 Images

Overview

Quantity:	100 µL
Target:	TMEM27
Binding Specificity:	AA 15-141
Reactivity:	Rat
Host:	Rabbit
Clonality:	Polyclonal
Conjugate:	This TMEM27 antibody is un-conjugated
Application:	Western Blotting (WB), Immunohistochemistry (IHC), Immunoprecipitation (IP), Immunocytochemistry (ICC)

Product Details

Purpose:	Polyclonal Antibody to Transmembrane Protein 27 (TMEM27)
Immunogen:	Recombinant Transmembrane Protein 27 (TMEM27) corresponding to Glu15~Pro141
Isotype:	IgG
Specificity:	The antibody is a rabbit polyclonal antibody raised against TMEM27. It has been selected for its ability to recognize TMEM27 in immunohistochemical staining and western blotting.
Cross-Reactivity:	Human, Mouse
Purification:	Antigen-specific affinity chromatography followed by Protein A affinity chromatography

Target Details

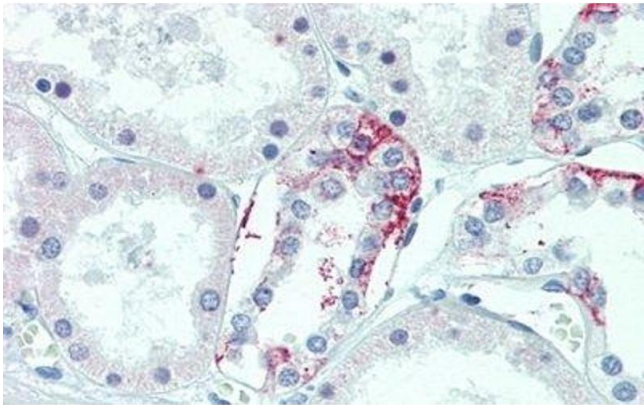
Target:	TMEM27
Alternative Name:	Transmembrane Protein 27 (TMEM27 Products)
Background:	NX17, Collectrin

Application Details

Application Notes:	Western blotting: 0.5-2 µg/mL Immunohistochemistry: 5-20 µg/mL Immunocytochemistry: 5-20 µg/mL Optimal working dilutions must be determined by end user.
Comment:	The thermal stability is described by the loss rate. The loss rate was determined by accelerated thermal degradation test, that is, incubate the protein at 37°C for 48h, and no obvious degradation and precipitation were observed. The loss rate is less than 5% within the expiration date under appropriate storage condition.
Restrictions:	For Research Use only

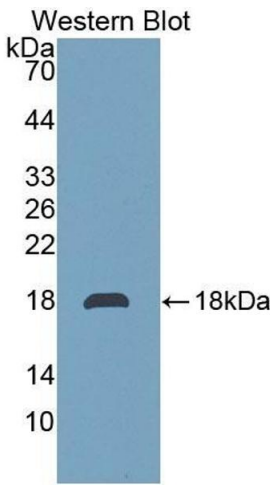
Handling

Format:	Liquid
Buffer:	PBS, pH 7.4, containing 0.02 % Sodium azide, 50 % glycerol.
Preservative:	Sodium azide
Precaution of Use:	This product contains Sodium azide: a POISONOUS AND HAZARDOUS SUBSTANCE which should be handled by trained staff only.
Storage:	4 °C,-20 °C
Storage Comment:	Store at 4°C for frequent use. Stored at -20°C in a manual defrost freezer for two year without detectable loss of activity. Avoid repeated freeze-thaw cycles.
Expiry Date:	24 months



Immunohistochemistry

Image 1. Detection of TMEM27 in Human Kidney Tissue using Polyclonal Antibody to Transmembrane Protein 27 (TMEM27)



Western Blotting

Image 2. Detection of Recombinant TMEM27, Rat using Polyclonal Antibody to Transmembrane Protein 27 (TMEM27)