



[Go to Product page](#)

Datasheet for ABIN7436873  
**anti-ESR2 antibody (AA 46-530)**

3 Images

### Overview

Quantity:	100 µL
Target:	ESR2
Binding Specificity:	AA 46-530
Reactivity:	Mouse
Host:	Rabbit
Clonality:	Polyclonal
Conjugate:	This ESR2 antibody is un-conjugated
Application:	Western Blotting (WB), Immunohistochemistry (IHC), Immunoprecipitation (IP), Immunocytochemistry (ICC)

### Product Details

Purpose:	Polyclonal Antibody to Estrogen Receptor Beta (ERb)
Immunogen:	Recombinant Estrogen Receptor Beta (ERb) corresponding to Met46~Gln530 with N-terminal His Tag
Isotype:	IgG
Specificity:	The antibody is a rabbit polyclonal antibody raised against ERb. It has been selected for its ability to recognize ERb in immunohistochemical staining and western blotting.
Cross-Reactivity:	Human, Rat
Purification:	Antigen-specific affinity chromatography followed by Protein A affinity chromatography

## Target Details

---

Target:	ESR2
Alternative Name:	Estrogen Receptor Beta ( <a href="#">ESR2 Products</a> )
Background:	ER-B, ESRB, ESTRB, NR3A2, NR3-A2, ESR2, Estrogen Receptor 2, Nuclear Receptor Subfamily 3,Group A,Member 2
Pathways:	<a href="#">Nuclear Receptor Transcription Pathway</a> , <a href="#">EGFR Signaling Pathway</a> , <a href="#">Intracellular Steroid Hormone Receptor Signaling Pathway</a> , <a href="#">Steroid Hormone Mediated Signaling Pathway</a> , <a href="#">Regulation of Intracellular Steroid Hormone Receptor Signaling</a>

## Application Details

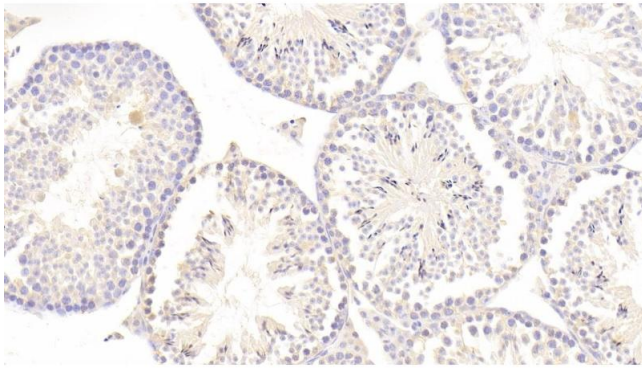
---

Application Notes:	Western blotting: 0.5-2 µg/mL Immunohistochemistry: 5-20 µg/mL Immunocytochemistry: 5-20 µg/mL Optimal working dilutions must be determined by end user.
Comment:	The thermal stability is described by the loss rate. The loss rate was determined by accelerated thermal degradation test, that is, incubate the protein at 37°C for 48h, and no obvious degradation and precipitation were observed. The loss rate is less than 5% within the expiration date under appropriate storage condition.
Restrictions:	For Research Use only

## Handling

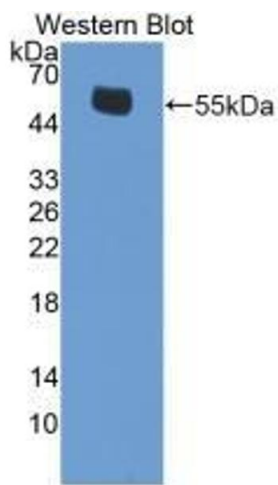
---

Format:	Liquid
Buffer:	PBS, pH 7.4, containing 0.02 % Sodium azide, 50 % glycerol.
Preservative:	Sodium azide
Precaution of Use:	This product contains Sodium azide: a POISONOUS AND HAZARDOUS SUBSTANCE which should be handled by trained staff only.
Storage:	4 °C,-20 °C
Storage Comment:	Store at 4°C for frequent use. Stored at -20°C in a manual defrost freezer for two year without detectable loss of activity. Avoid repeated freeze-thaw cycles.
Expiry Date:	24 months



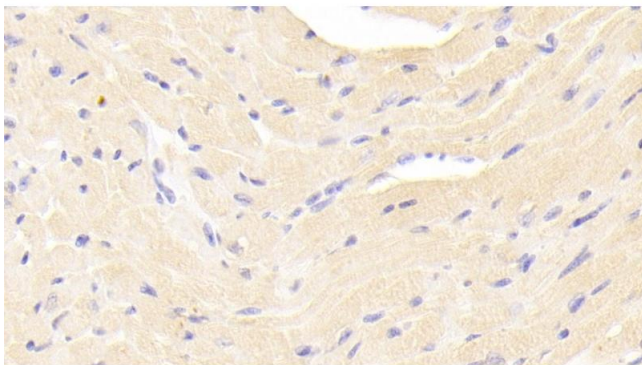
### Immunohistochemistry

**Image 1.** Detection of ERb in Mouse Testis Tissue using Polyclonal Antibody to Estrogen Receptor Beta (ERb)



### Western Blotting

**Image 2.** Detection of Recombinant ERb, Mouse using Polyclonal Antibody to Estrogen Receptor Beta (ERb)



### Immunohistochemistry

**Image 3.** Detection of ERb in Mouse Cardiac Muscle Tissue using Polyclonal Antibody to Estrogen Receptor Beta (ERb)