

Datasheet for ABIN7437005  
**anti-S100A6 antibody (AA 1-89)**

## 8 Images

[Go to Product page](#)

## Overview

Quantity:	100 µL
Target:	S100A6
Binding Specificity:	AA 1-89
Reactivity:	Rat
Host:	Rabbit
Clonality:	Polyclonal
Conjugate:	This S100A6 antibody is un-conjugated
Application:	Western Blotting (WB), Immunohistochemistry (IHC), Immunoprecipitation (IP), Immunocytochemistry (ICC)

## Product Details

Purpose:	Polyclonal Antibody to S100 Calcium Binding Protein A6 (S100A6)
Immunogen:	Recombinant S100 Calcium Binding Protein A6 (S100A6) corresponding to Met1~Lys89 (Accession # P05964)
Isotype:	IgG
Specificity:	The antibody is a rabbit polyclonal antibody raised against S100A6. It has been selected for its ability to recognize S100A6 in immunohistochemical staining and western blotting.
Cross-Reactivity:	Human, Mouse
Purification:	Antigen-specific affinity chromatography followed by Protein A affinity chromatography

## Target Details

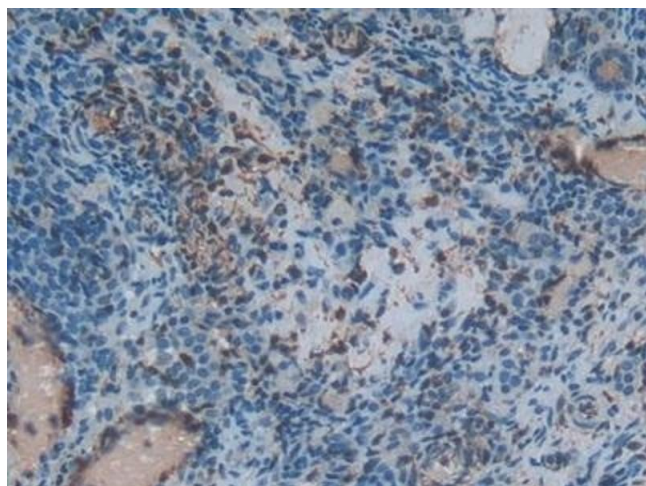
Target:	S100A6
Alternative Name:	S100 Calcium Binding Protein A6 ( <a href="#">S100A6 Products</a> )
Background:	S100-A6, 2A9, 5B10, CABP, CACY, PRA, MLN 4, Calcyclin, Growth factor-inducible protein 2A9, Prolactin receptor-associated protein
Pathways:	<a href="#">S100 Proteins</a>

## Application Details

Application Notes:	Western blotting: 0.5-2 µg/mL Immunohistochemistry: 5-20 µg/mL Immunocytochemistry: 5-20 µg/mL Optimal working dilutions must be determined by end user.
Comment:	The thermal stability is described by the loss rate. The loss rate was determined by accelerated thermal degradation test, that is, incubate the protein at 37°C for 48h, and no obvious degradation and precipitation were observed. The loss rate is less than 5% within the expiration date under appropriate storage condition.
Restrictions:	For Research Use only

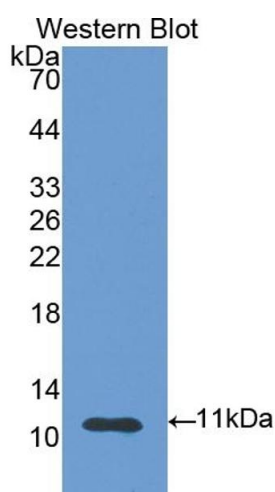
## Handling

Format:	Liquid
Buffer:	PBS, pH 7.4, containing 0.02 % Sodium azide, 50 % glycerol.
Preservative:	Sodium azide
Precaution of Use:	This product contains Sodium azide: a POISONOUS AND HAZARDOUS SUBSTANCE which should be handled by trained staff only.
Storage:	4 °C,-20 °C
Storage Comment:	Store at 4°C for frequent use. Stored at -20°C in a manual defrost freezer for two year without detectable loss of activity. Avoid repeated freeze-thaw cycles.
Expiry Date:	24 months



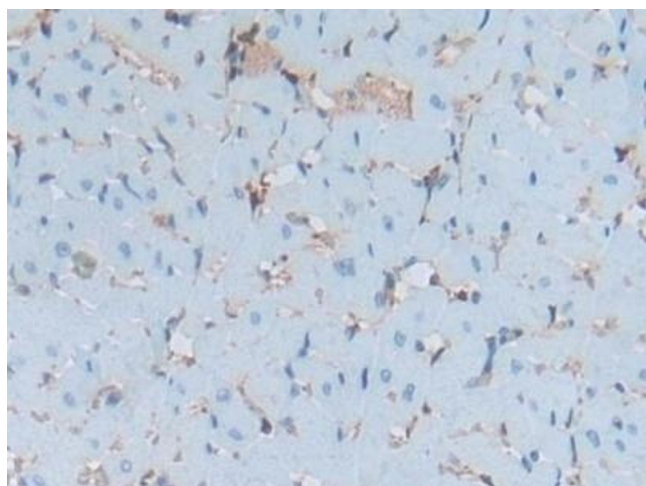
#### Immunohistochemistry

**Image 1.** Detection of S100A6 in Rat Ovary Tissue using Polyclonal Antibody to S100 Calcium Binding Protein A6 (S100A6)



#### Western Blotting

**Image 2.** Detection of Recombinant S100A6, Rat using Polyclonal Antibody to S100 Calcium Binding Protein A6 (S100A6)



#### Immunohistochemistry

**Image 3.** Detection of S100A6 in Rat Heart Tissue using Polyclonal Antibody to S100 Calcium Binding Protein A6 (S100A6)

Please check the [product details page](#) for more images. Overall 8 images are available for ABIN7437005.