

Datasheet for ABIN7437011
anti-Keratin 2 antibody (AA 508-685)

5 Images

[Go to Product page](#)

Overview

| | |
|----------------------|--|
| Quantity: | 100 µL |
| Target: | Keratin 2 (KRT2) |
| Binding Specificity: | AA 508-685 |
| Reactivity: | Rat |
| Host: | Rabbit |
| Clonality: | Polyclonal |
| Conjugate: | This Keratin 2 antibody is un-conjugated |
| Application: | Western Blotting (WB), Immunohistochemistry (IHC), Immunoprecipitation (IP), Immunocytochemistry (ICC) |

Product Details

| | |
|-------------------|--|
| Purpose: | Polyclonal Antibody to Keratin 2 (CK2) |
| Immunogen: | Recombinant Keratin 2 (CK2) corresponding to Glu508~Arg685 (Accession # Q6IG02) |
| Isotype: | IgG |
| Specificity: | The antibody is a rabbit polyclonal antibody raised against CK2. It has been selected for its ability to recognize CK2 in immunohistochemical staining and western blotting. |
| Cross-Reactivity: | Human, Mouse |
| Purification: | Antigen-specific affinity chromatography followed by Protein A affinity chromatography |

Target Details

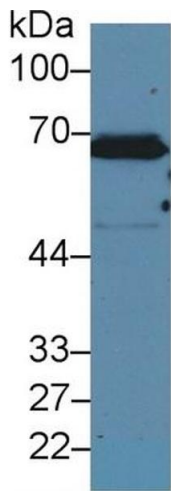
| | |
|-------------------|---|
| Target: | Keratin 2 (KRT2) |
| Alternative Name: | Keratin 2 (KRT2 Products) |
| Background: | KRT2A, KRT2, KRTE, Keratin 2, Keratin 2A, Keratin 2E, Epidermal Ichthyosis Bullosa Of Siemens, Keratin, type II cytoskeletal 2 epidermal, Epithelial keratin-2e |

Application Details

| | |
|--------------------|---|
| Application Notes: | Western blotting: 0.5-2 µg/mL Immunohistochemistry: 5-20 µg/mL Immunocytochemistry: 5-20 µg/mL Optimal working dilutions must be determined by end user. |
| Comment: | The thermal stability is described by the loss rate. The loss rate was determined by accelerated thermal degradation test, that is, incubate the protein at 37°C for 48h, and no obvious degradation and precipitation were observed. The loss rate is less than 5% within the expiration date under appropriate storage condition. |
| Restrictions: | For Research Use only |

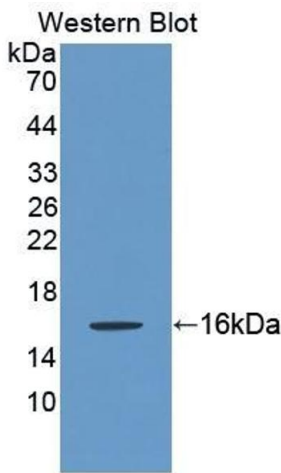
Handling

| | |
|--------------------|---|
| Format: | Liquid |
| Buffer: | PBS, pH 7.4, containing 0.02 % Sodium azide, 50 % glycerol. |
| Preservative: | Sodium azide |
| Precaution of Use: | This product contains Sodium azide: a POISONOUS AND HAZARDOUS SUBSTANCE which should be handled by trained staff only. |
| Storage: | 4 °C, -20 °C |
| Storage Comment: | Store at 4°C for frequent use. Stored at -20°C in a manual defrost freezer for two year without detectable loss of activity. Avoid repeated freeze-thaw cycles. |
| Expiry Date: | 24 months |



Western Blotting

Image 1. Detection of CK2 in Human A431 cell lysate using Polyclonal Antibody to Keratin 2 (CK2)



Western Blotting

Image 2. Detection of Recombinant KRT2, Rat using Polyclonal Antibody to Keratin 2 (CK2)



Western Blotting

Image 3. Detection of CK2 in Rat Liver lysate using Polyclonal Antibody to Keratin 2 (CK2)

Please check the [product details page](#) for more images. Overall 5 images are available for ABIN7437011.