



[Go to Product page](#)

Datasheet for ABIN7437116

## anti-PABPC1L antibody (AA 12-176)

### 1 Image

#### Overview

Quantity:	100 µL
Target:	PABPC1L
Binding Specificity:	AA 12-176
Reactivity:	Human
Host:	Rabbit
Clonality:	Polyclonal
Conjugate:	This PABPC1L antibody is un-conjugated
Application:	Western Blotting (WB), Immunohistochemistry (IHC), Immunoprecipitation (IP), Immunocytochemistry (ICC)

#### Product Details

Purpose:	Polyclonal Antibody to Poly A Binding Protein Cytoplasmic 1 Like Protein (PABPC1L)
Immunogen:	Recombinant Poly A Binding Protein Cytoplasmic 1 Like Protein (PABPC1L) corresponding to Ser12~Arg176 (Accession # Q4VXU2)
Isotype:	IgG
Specificity:	The antibody is a rabbit polyclonal antibody raised against PABPC1L. It has been selected for its ability to recognize PABPC1L in immunohistochemical staining and western blotting.
Purification:	Antigen-specific affinity chromatography followed by Protein A affinity chromatography

#### Target Details

Target:	PABPC1L
---------	---------

## Target Details

---

Alternative Name: Poly A Binding Protein Cytoplasmic 1 Like Protein ([PABPC1L Products](#))

---

Background: C20orf119, PABPC1L1, ePAB, Polyadenylate-Binding Protein 1-Like

---

## Application Details

---

Application Notes: Western blotting: 0.5-2 µg/mL  
Immunohistochemistry: 5-20 µg/mL  
Immunocytochemistry: 5-20 µg/mL  
Optimal working dilutions must be determined by end user.

---

Comment: The thermal stability is described by the loss rate. The loss rate was determined by accelerated thermal degradation test, that is, incubate the protein at 37°C for 48h, and no obvious degradation and precipitation were observed. The loss rate is less than 5% within the expiration date under appropriate storage condition.

---

Restrictions: For Research Use only

---

## Handling

---

Format: Liquid

---

Buffer: PBS, pH 7.4, containing 0.02 % Sodium azide, 50 % glycerol.

---

Preservative: Sodium azide

---

Precaution of Use: This product contains Sodium azide: a POISONOUS AND HAZARDOUS SUBSTANCE which should be handled by trained staff only.

---

Storage: 4 °C,-20 °C

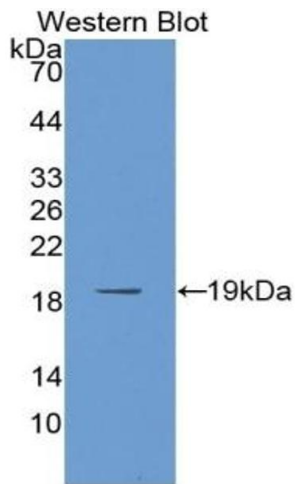
---

Storage Comment: Store at 4°C for frequent use. Stored at -20°C in a manual defrost freezer for two year without detectable loss of activity. Avoid repeated freeze-thaw cycles.

---

Expiry Date: 24 months

---



### Western Blotting

**Image 1.** Detection of Recombinant PABPC1L, Human using Polyclonal Antibody to Poly A Binding Protein Cytoplasmic 1 Like Protein (PABPC1L)