

Datasheet for ABIN7437119
anti-SIGLEC14 antibody (AA 24-137)[Go to Product page](#)

2 Images

Overview

| | |
|----------------------|--|
| Quantity: | 100 µL |
| Target: | SIGLEC14 |
| Binding Specificity: | AA 24-137 |
| Reactivity: | Human |
| Host: | Rabbit |
| Clonality: | Polyclonal |
| Conjugate: | This SIGLEC14 antibody is un-conjugated |
| Application: | Western Blotting (WB), Immunohistochemistry (IHC), Immunoprecipitation (IP), Immunocytochemistry (ICC) |

Product Details

| | |
|-------------------|--|
| Purpose: | Polyclonal Antibody to Sialic Acid Binding Ig Like Lectin 14 (SIGLEC14) |
| Immunogen: | Recombinant Sialic Acid Binding Ig Like Lectin 14 (SIGLEC14) corresponding to Gln24~Leu137 with N-terminal His Tag |
| Isotype: | IgG |
| Specificity: | The antibody is a rabbit polyclonal antibody raised against SIGLEC14. It has been selected for its ability to recognize SIGLEC14 in immunohistochemical staining and western blotting. |
| Cross-Reactivity: | Pig, Rat |
| Purification: | Antigen-specific affinity chromatography followed by Protein A affinity chromatography |

Target Details

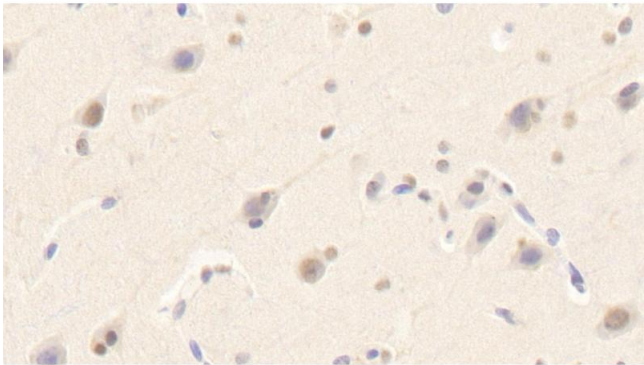
| | |
|-------------------|---|
| Target: | SIGLEC14 |
| Alternative Name: | Sialic Acid Binding Ig Like Lectin 14 (SIGLEC14 Products) |

Application Details

| | |
|--------------------|---|
| Application Notes: | Western blotting: 0.5-2 µg/mL Immunohistochemistry: 5-20 µg/mL Immunocytochemistry: 5-20 µg/mL Optimal working dilutions must be determined by end user. |
| Comment: | The thermal stability is described by the loss rate. The loss rate was determined by accelerated thermal degradation test, that is, incubate the protein at 37°C for 48h, and no obvious degradation and precipitation were observed. The loss rate is less than 5% within the expiration date under appropriate storage condition. |
| Restrictions: | For Research Use only |

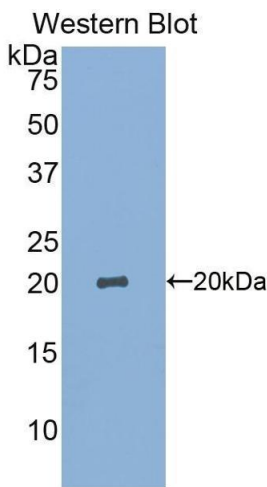
Handling

| | |
|--------------------|---|
| Format: | Liquid |
| Buffer: | PBS, pH 7.4, containing 0.02 % Sodium azide, 50 % glycerol. |
| Preservative: | Sodium azide |
| Precaution of Use: | This product contains Sodium azide: a POISONOUS AND HAZARDOUS SUBSTANCE which should be handled by trained staff only. |
| Storage: | 4 °C,-20 °C |
| Storage Comment: | Store at 4°C for frequent use. Stored at -20°C in a manual defrost freezer for two year without detectable loss of activity. Avoid repeated freeze-thaw cycles. |
| Expiry Date: | 24 months |



Immunohistochemistry

Image 1. Detection of SIGLEC14 in Human Cerebrum Tissue using Polyclonal Antibody to Sialic Acid Binding Ig Like Lectin 14 (SIGLEC14)



Western Blotting

Image 2. Detection of Recombinant SIGLEC14, Human using Polyclonal Antibody to Sialic Acid Binding Ig Like Lectin 14 (SIGLEC14)