



[Go to Product page](#)

Datasheet for ABIN7437125
anti-PLA1A antibody (AA 309-452)

5 Images

Overview

Quantity:	100 µL
Target:	PLA1A
Binding Specificity:	AA 309-452
Reactivity:	Human
Host:	Rabbit
Clonality:	Polyclonal
Conjugate:	This PLA1A antibody is un-conjugated
Application:	Western Blotting (WB), Immunohistochemistry (IHC), Immunoprecipitation (IP), Immunocytochemistry (ICC)

Product Details

Purpose:	Polyclonal Antibody to Phospholipase A1 (PLA1)
Immunogen:	Recombinant Phospholipase A1 (PLA1) corresponding to Leu309~Lys452 with N-terminal His Tag
Isotype:	IgG
Specificity:	The antibody is a rabbit polyclonal antibody raised against PLA1. It has been selected for its ability to recognize PLA1 in immunohistochemical staining and western blotting.
Cross-Reactivity:	Pig
Purification:	Antigen-specific affinity chromatography followed by Protein A affinity chromatography

Target Details

Target:	PLA1A
Alternative Name:	Phospholipase A1 (PLA1A Products)
Background:	PLA1A, ps-PLA1, NMD, Phosphatidylserine-Specific Phospholipase A1-Alpha

Application Details

Application Notes:	Western blotting: 0.5-2 µg/mL Immunohistochemistry: 5-20 µg/mL Immunocytochemistry: 5-20 µg/mL Optimal working dilutions must be determined by end user.
Comment:	The thermal stability is described by the loss rate. The loss rate was determined by accelerated thermal degradation test, that is, incubate the protein at 37°C for 48h, and no obvious degradation and precipitation were observed. The loss rate is less than 5% within the expiration date under appropriate storage condition.
Restrictions:	For Research Use only

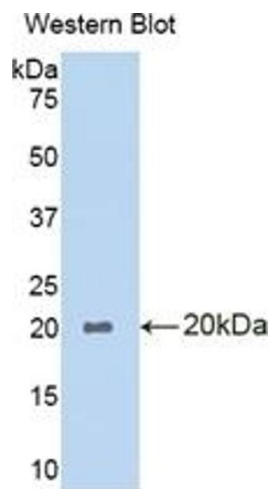
Handling

Format:	Liquid
Buffer:	PBS, pH 7.4, containing 0.02 % Sodium azide, 50 % glycerol.
Preservative:	Sodium azide
Precaution of Use:	This product contains Sodium azide: a POISONOUS AND HAZARDOUS SUBSTANCE which should be handled by trained staff only.
Storage:	4 °C,-20 °C
Storage Comment:	Store at 4°C for frequent use. Stored at -20°C in a manual defrost freezer for two year without detectable loss of activity. Avoid repeated freeze-thaw cycles.
Expiry Date:	24 months



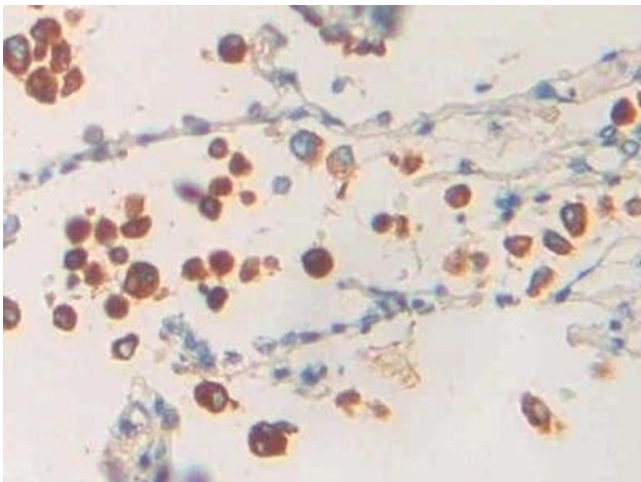
Western Blotting

Image 1. Detection of PLA1 in Human 293T cell lysate using Polyclonal Antibody to Phospholipase A1 (PLA1)



Western Blotting

Image 2. Detection of Recombinant PLA1, Human using Polyclonal Antibody to Phospholipase A1 (PLA1)



Immunohistochemistry

Image 3. Detection of PLA1 in Human Lung Tissue using Polyclonal Antibody to Phospholipase A1 (PLA1)

Please check the [product details page](#) for more images. Overall 5 images are available for ABIN7437125.