



Datasheet for ABIN7437239
anti-Hemoglobin antibody



[Go to Product page](#)

2 Images

Overview

Quantity:	100 µL
Target:	Hemoglobin
Reactivity:	Pig
Host:	Rabbit
Clonality:	Polyclonal
Conjugate:	This Hemoglobin antibody is un-conjugated
Application:	Western Blotting (WB), Immunohistochemistry (IHC), Immunoprecipitation (IP), Immunocytochemistry (ICC)

Product Details

Purpose:	Polyclonal Antibody to Hemoglobin (HB)
Immunogen:	Native Hemoglobin (HB)
Isotype:	IgG
Specificity:	The antibody is a rabbit polyclonal antibody raised against HB. It has been selected for its ability to recognize HB in immunohistochemical staining and western blotting.
Purification:	Antigen-specific affinity chromatography followed by Protein A affinity chromatography

Target Details

Target:	Hemoglobin
Abstract:	Hemoglobin Products

Target Details

Background: Hgb, Haemoglobin, Heterotetramer($\alpha\beta$)₂

Application Details

Application Notes: Western blotting: 0.5-2 $\mu\text{g}/\text{mL}$
Immunohistochemistry: 5-20 $\mu\text{g}/\text{mL}$
Immunocytochemistry: 5-20 $\mu\text{g}/\text{mL}$
Optimal working dilutions must be determined by end user.

Comment: The thermal stability is described by the loss rate. The loss rate was determined by accelerated thermal degradation test, that is, incubate the protein at 37°C for 48h, and no obvious degradation and precipitation were observed. The loss rate is less than 5% within the expiration date under appropriate storage condition.

Restrictions: For Research Use only

Handling

Format: Liquid

Buffer: 0.01M PBS, pH 7.4, containing 0.05 % Proclin-300, 50 % glycerol.

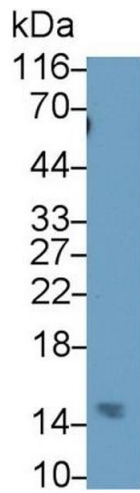
Preservative: ProClin

Precaution of Use: This product contains ProClin: a POISONOUS AND HAZARDOUS SUBSTANCE which should be handled by trained staff only.

Storage: 4 °C, -20 °C

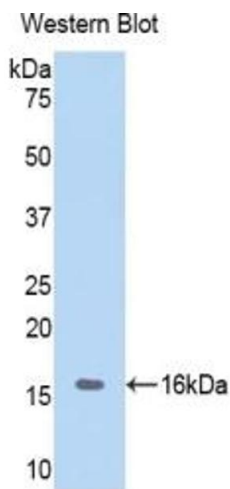
Storage Comment: Store at 4°C for frequent use. Stored at -20°C in a manual defrost freezer for two year without detectable loss of activity. Avoid repeated freeze-thaw cycles.

Expiry Date: 24 months



Western Blotting

Image 1. Detection of HB in Human Blood Cells lysate using Polyclonal Antibody to Hemoglobin (HB)



Western Blotting

Image 2. Detection of Recombinant Hemoglobin, Porcine using Polyclonal Antibody to Hemoglobin (HB)