

Datasheet for ABIN7437245
anti-Hemoglobin antibody

9 Images

[Go to Product page](#)

Overview

Quantity:	100 µL
Target:	Hemoglobin
Reactivity:	Rhesus Monkey
Host:	Rabbit
Clonality:	Polyclonal
Conjugate:	This Hemoglobin antibody is un-conjugated
Application:	Western Blotting (WB), Immunohistochemistry (IHC), Immunoprecipitation (IP), Immunocytochemistry (ICC)

Product Details

Purpose:	Polyclonal Antibody to Hemoglobin (HB)
Immunogen:	Native Hemoglobin (HB)
Isotype:	IgG
Specificity:	The antibody is a rabbit polyclonal antibody raised against HB. It has been selected for its ability to recognize HB in immunohistochemical staining and western blotting.
Cross-Reactivity:	Dog, Human, Pig
Purification:	Antigen-specific affinity chromatography followed by Protein A affinity chromatography

Target Details

Target:	Hemoglobin
---------	------------

Target Details

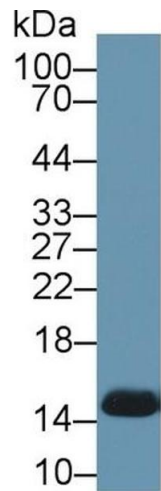
Abstract:	Hemoglobin Products
Background:	Hgb, Haemoglobin, Heterotetramer($\alpha\beta$) ₂

Application Details

Application Notes:	Western blotting: 0.5-2 μ g/mL Immunohistochemistry: 5-20 μ g/mL Immunocytochemistry: 5-20 μ g/mL Optimal working dilutions must be determined by end user.
Comment:	The thermal stability is described by the loss rate. The loss rate was determined by accelerated thermal degradation test, that is, incubate the protein at 37°C for 48h, and no obvious degradation and precipitation were observed. The loss rate is less than 5% within the expiration date under appropriate storage condition.
Restrictions:	For Research Use only

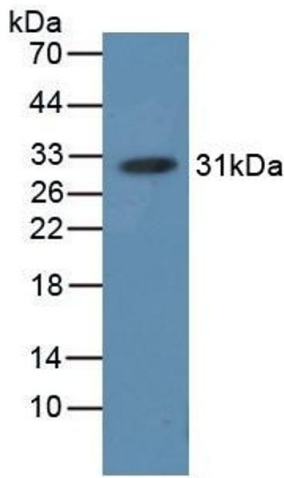
Handling

Format:	Liquid
Buffer:	0.01M PBS, pH 7.4, containing 0.05 % Proclin-300, 50 % glycerol.
Preservative:	ProClin
Precaution of Use:	This product contains ProClin: a POISONOUS AND HAZARDOUS SUBSTANCE which should be handled by trained staff only.
Storage:	4 °C,-20 °C
Storage Comment:	Store at 4°C for frequent use. Stored at -20°C in a manual defrost freezer for two year without detectable loss of activity. Avoid repeated freeze-thaw cycles.
Expiry Date:	24 months



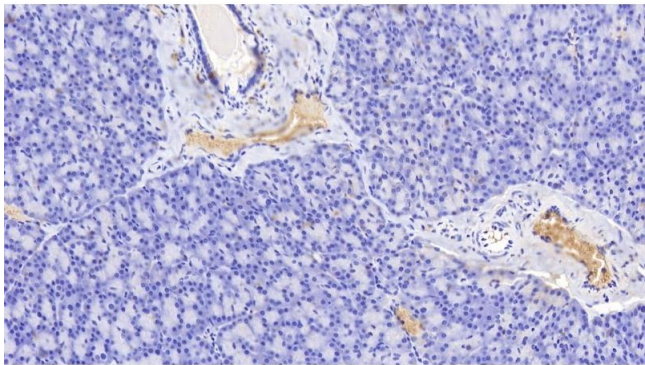
Western Blotting

Image 1. Detection of HB in Canine Serum using Polyclonal Antibody to Hemoglobin (HB)



Western Blotting

Image 2. Detection of HB in HB, Simian using Polyclonal Antibody to Hemoglobin (HB)



Immunohistochemistry

Image 3. Detection of HB in Human Pancreas Tissue using Polyclonal Antibody to Hemoglobin (HB)

Please check the [product details page](#) for more images. Overall 9 images are available for ABIN7437245.