



[Go to Product page](#)

Datasheet for ABIN7437389

anti-PABPC1L antibody (AA 514-612)

2 Images

Overview

Quantity:	100 µL
Target:	PABPC1L
Binding Specificity:	AA 514-612
Reactivity:	Human
Host:	Rabbit
Clonality:	Polyclonal
Conjugate:	This PABPC1L antibody is un-conjugated
Application:	Western Blotting (WB), Immunohistochemistry (IHC), Immunoprecipitation (IP), Immunocytochemistry (ICC)

Product Details

Purpose:	Polyclonal Antibody to Poly A Binding Protein Cytoplasmic 1 Like Protein (PABPC1L)
Immunogen:	Recombinant Poly A Binding Protein Cytoplasmic 1 Like Protein (PABPC1L) corresponding to Ser514~Tyr612 (Accession # Q4VXU2)
Isotype:	IgG
Specificity:	The antibody is a rabbit polyclonal antibody raised against PABPC1L. It has been selected for its ability to recognize PABPC1L in immunohistochemical staining and western blotting.
Cross-Reactivity:	Rat
Purification:	Antigen-specific affinity chromatography followed by Protein A affinity chromatography

Target Details

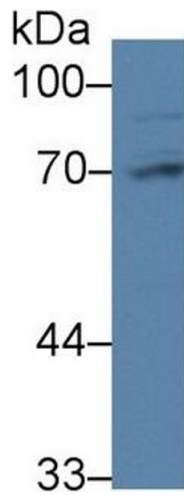
Target:	PABPC1L
Alternative Name:	Poly A Binding Protein Cytoplasmic 1 Like Protein (PABPC1L Products)
Background:	C20orf119, PABPC1L1, ePAB, Polyadenylate-Binding Protein 1-Like

Application Details

Application Notes:	Western blotting: 0.5-2 µg/mL Immunohistochemistry: 5-20 µg/mL Immunocytochemistry: 5-20 µg/mL Optimal working dilutions must be determined by end user.
Comment:	The thermal stability is described by the loss rate. The loss rate was determined by accelerated thermal degradation test, that is, incubate the protein at 37°C for 48h, and no obvious degradation and precipitation were observed. The loss rate is less than 5% within the expiration date under appropriate storage condition.
Restrictions:	For Research Use only

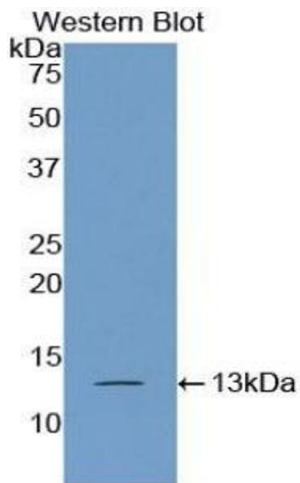
Handling

Format:	Liquid
Buffer:	PBS, pH 7.4, containing 0.02 % Sodium azide, 50 % glycerol.
Preservative:	Sodium azide
Precaution of Use:	This product contains Sodium azide: a POISONOUS AND HAZARDOUS SUBSTANCE which should be handled by trained staff only.
Storage:	4 °C,-20 °C
Storage Comment:	Store at 4°C for frequent use. Stored at -20°C in a manual defrost freezer for two year without detectable loss of activity. Avoid repeated freeze-thaw cycles.
Expiry Date:	24 months



Western Blotting

Image 1. Detection of PABPC1L in Rat Liver lysate using Polyclonal Antibody to Poly A Binding Protein Cytoplasmic 1 Like Protein (PABPC1L)



Western Blotting

Image 2. Detection of Recombinant PABPC1L, Human using Polyclonal Antibody to Poly A Binding Protein Cytoplasmic 1 Like Protein (PABPC1L)