

Datasheet for ABIN7437392
anti-PI16 antibody (AA 21-468)[Go to Product page](#)

2 Images

Overview

Quantity:	100 µL
Target:	PI16
Binding Specificity:	AA 21-468
Reactivity:	Mouse
Host:	Rabbit
Clonality:	Polyclonal
Conjugate:	This PI16 antibody is un-conjugated
Application:	Western Blotting (WB), Immunohistochemistry (IHC), Immunoprecipitation (IP), Immunocytochemistry (ICC)

Product Details

Purpose:	Polyclonal Antibody to Peptidase Inhibitor 16 (PI16)
Immunogen:	Recombinant Peptidase Inhibitor 16 (PI16) corresponding to Leu21~Lys468 with N-terminal His Tag
Isotype:	IgG
Specificity:	The antibody is a rabbit polyclonal antibody raised against PI16. It has been selected for its ability to recognize PI16 in immunohistochemical staining and western blotting.
Purification:	Antigen-specific affinity chromatography followed by Protein A affinity chromatography

Target Details

Target:	PI16
---------	------

Target Details

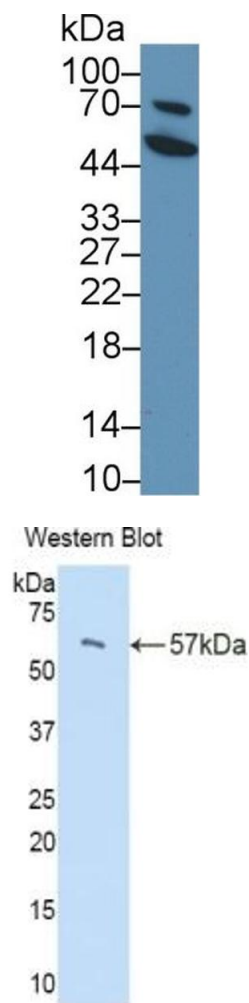
Alternative Name:	Peptidase Inhibitor 16 (PI16 Products)
Background:	MSMBBP, CRISP9, PSPBP, Microseminoprotein, Beta-Binding Protein, Protease Inhibitor 16, PSP94-binding protein, Cysteine-rich secretory protein 9

Application Details

Application Notes:	Western blotting: 0.5-2 µg/mL Immunohistochemistry: 5-20 µg/mL Immunocytochemistry: 5-20 µg/mL Optimal working dilutions must be determined by end user.
Comment:	The thermal stability is described by the loss rate. The loss rate was determined by accelerated thermal degradation test, that is, incubate the protein at 37°C for 48h, and no obvious degradation and precipitation were observed. The loss rate is less than 5% within the expiration date under appropriate storage condition.
Restrictions:	For Research Use only

Handling

Format:	Liquid
Buffer:	PBS, pH 7.4, containing 0.02 % Sodium azide, 50 % glycerol.
Preservative:	Sodium azide
Precaution of Use:	This product contains Sodium azide: a POISONOUS AND HAZARDOUS SUBSTANCE which should be handled by trained staff only.
Storage:	4 °C, -20 °C
Storage Comment:	Store at 4°C for frequent use. Stored at -20°C in a manual defrost freezer for two year without detectable loss of activity. Avoid repeated freeze-thaw cycles.
Expiry Date:	24 months



Western Blotting

Image 1. Detection of PI16 in Human PC3 cell lysate using Polyclonal Antibody to Peptidase Inhibitor 16 (PI16)

Western Blotting

Image 2. Detection of Recombinant PI16, Mouse using Polyclonal Antibody to Peptidase Inhibitor 16 (PI16)