

Datasheet for ABIN7437542

**anti-HLA-DRA antibody (AA 27-216)****3** Images[Go to Product page](#)

## Overview

Quantity:	100 µL
Target:	HLA-DRA
Binding Specificity:	AA 27-216
Reactivity:	Human
Host:	Rabbit
Clonality:	Polyclonal
Conjugate:	This HLA-DRA antibody is un-conjugated
Application:	Western Blotting (WB), Immunohistochemistry (IHC), Immunoprecipitation (IP), Immunocytochemistry (ICC)

## Product Details

Purpose:	Polyclonal Antibody to HLA Class II Histocompatibility Antigen, DR Alpha Chain (HLA-DRA)
Immunogen:	Recombinant HLA Class II Histocompatibility Antigen, DR Alpha Chain (HLA-DRA) corresponding to Lys27~Glu216 with N-terminal His Tag
Isotype:	IgG
Specificity:	The antibody is a rabbit polyclonal antibody raised against HLA-DRA. It has been selected for its ability to recognize HLA-DRA in immunohistochemical staining and western blotting.
Cross-Reactivity:	Mouse, Pig
Purification:	Antigen-specific affinity chromatography followed by Protein A affinity chromatography

## Target Details

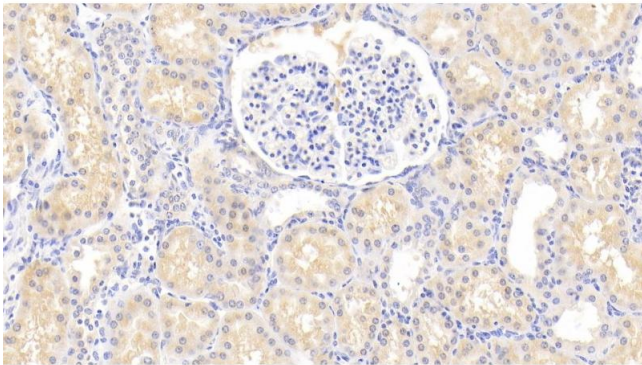
Target:	HLA-DRA
Alternative Name:	HLA Class II Histocompatibility Antigen, DR Alpha Chain ( <a href="#">HLA-DRA Products</a> )
Background:	MHCDRa, HLADRa, Major Histocompatibility Complex Class II DR Alpha
Pathways:	<a href="#">TCR Signaling</a> , <a href="#">CXCR4-mediated Signaling Events</a> , <a href="#">Human Leukocyte Antigen (HLA) in Adaptive Immune Response</a>

## Application Details

Application Notes:	Western blotting: 0.5-3 µg/mL Immunohistochemistry: 5-30 µg/mL Immunocytochemistry: 5-30 µg/mL Optimal working dilutions must be determined by end user.
Comment:	The thermal stability is described by the loss rate. The loss rate was determined by accelerated thermal degradation test, that is, incubate the protein at 37°C for 48h, and no obvious degradation and precipitation were observed. The loss rate is less than 5% within the expiration date under appropriate storage condition.
Restrictions:	For Research Use only

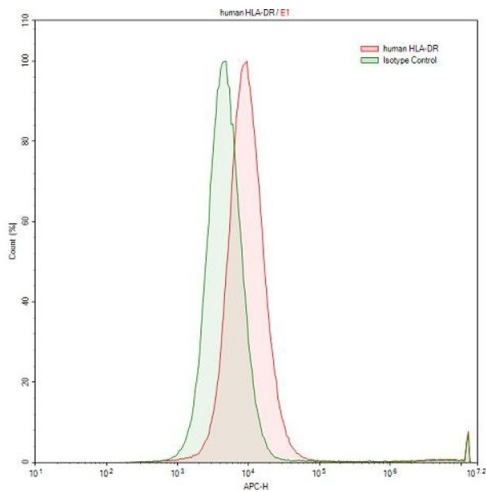
## Handling

Format:	Liquid
Buffer:	PBS, pH 7.4, containing 0.02 % Sodium azide, 50 % glycerol.
Preservative:	Sodium azide
Precaution of Use:	This product contains Sodium azide: a POISONOUS AND HAZARDOUS SUBSTANCE which should be handled by trained staff only.
Storage:	4 °C,-20 °C
Storage Comment:	Store at 4°C for frequent use. Stored at -20°C in a manual defrost freezer for two year without detectable loss of activity. Avoid repeated freeze-thaw cycles.
Expiry Date:	24 months



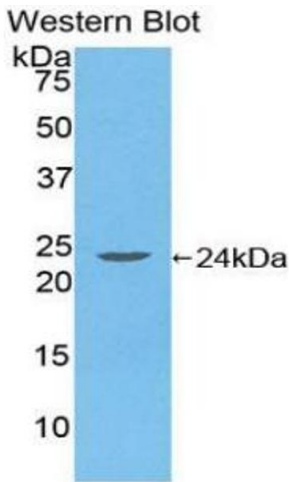
Immunohistochemistry

**Image 1.** Detection of HLA-DRA in Human Kidney Tissue using Polyclonal Antibody to HLA Class II Histocompatibility Antigen, DR Alpha Chain (HLA-DRA)



Flow Cytometry

**Image 2.** Detection of HLA-DRA in Raji human Burkitt's lymphoma cell line using Polyclonal Antibody to HLA Class II Histocompatibility Antigen, DR Alpha Chain (HLA-DRA)



Western Blotting

**Image 3.** Detection of Recombinant MHC DRα, Human using Polyclonal Antibody to HLA Class II Histocompatibility Antigen, DR Alpha Chain (HLA-DRA)