

Datasheet for ABIN7437605
anti-CRYbB2 antibody (AA 17-191)

2 Images

[Go to Product page](#)

Overview

Quantity:	100 µL
Target:	CRYbB2
Binding Specificity:	AA 17-191
Reactivity:	Mouse
Host:	Rabbit
Clonality:	Polyclonal
Conjugate:	This CRYbB2 antibody is un-conjugated
Application:	Western Blotting (WB), Immunohistochemistry (IHC), Immunoprecipitation (IP), Immunocytochemistry (ICC)

Product Details

Purpose:	Polyclonal Antibody to Crystallin Beta B2 (CRYbB2)
Immunogen:	Recombinant Crystallin Beta B2 (CRYbB2) corresponding to Pro17~Arg191 with N-terminal His Tag
Isotype:	IgG
Specificity:	The antibody is a rabbit polyclonal antibody raised against CRYbB2. It has been selected for its ability to recognize CRYbB2 in immunohistochemical staining and western blotting.
Cross-Reactivity:	Rat
Purification:	Antigen-specific affinity chromatography followed by Protein A affinity chromatography

Target Details

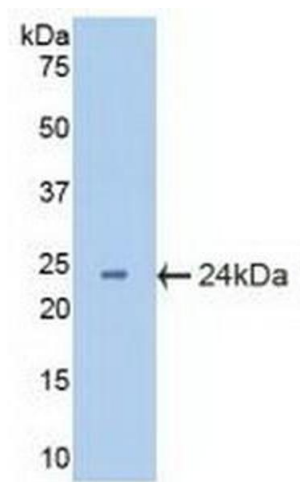
Target:	CRYbB2
Alternative Name:	Crystallin Beta B2 (CRYbB2 Products)
Background:	CCA2, CRYB2, CRYB2A, Beta-crystallin Bp

Application Details

Application Notes:	Western blotting: 0.5-2 µg/mL 1:250-1000 Immunohistochemistry: 5-20 µg/mL 1:25-100 Immunocytochemistry: 5-20 µg/mL 1:25-100 Optimal working dilutions must be determined by end user.
Comment:	The thermal stability is described by the loss rate. The loss rate was determined by accelerated thermal degradation test, that is, incubate the protein at 37°C for 48h, and no obvious degradation and precipitation were observed. The loss rate is less than 5% within the expiration date under appropriate storage condition.
Restrictions:	For Research Use only

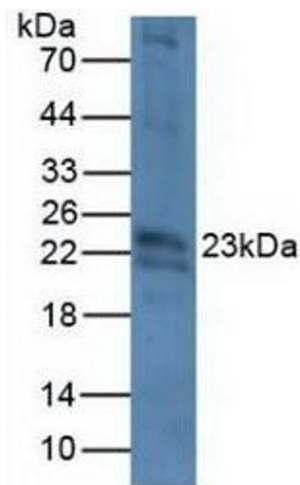
Handling

Format:	Liquid
Buffer:	0.01M PBS, pH 7.4, containing 0.05 % Proclin-300, 50 % glycerol.
Preservative:	ProClin
Precaution of Use:	This product contains ProClin: a POISONOUS AND HAZARDOUS SUBSTANCE which should be handled by trained staff only.
Storage:	4 °C,-20 °C
Storage Comment:	Store at 4°C for frequent use. Stored at -20°C in a manual defrost freezer for two year without detectable loss of activity. Avoid repeated freeze-thaw cycles.
Expiry Date:	24 months



Western Blotting

Image 1. Detection of Recombinant CRYbB2, Mouse using Polyclonal Antibody to Crystallin Beta B2 (CRYbB2)



Western Blotting

Image 2. Detection of CRYbB2 in Mouse Eye Tissue using Polyclonal Antibody to Crystallin Beta B2 (CRYbB2)