



[Go to Product page](#)

Datasheet for ABIN7437608
anti-MMP13 antibody (AA 70-245)

3 Images

Overview

Quantity:	100 µL
Target:	MMP13
Binding Specificity:	AA 70-245
Reactivity:	Rabbit
Host:	Guinea Pig
Clonality:	Polyclonal
Conjugate:	This MMP13 antibody is un-conjugated
Application:	Western Blotting (WB), Immunohistochemistry (IHC), Immunoprecipitation (IP), Immunocytochemistry (ICC)

Product Details

Purpose:	Polyclonal Antibody to Matrix Metalloproteinase 13 (MMP13)
Immunogen:	Recombinant Matrix Metalloproteinase 13 (MMP13) corresponding to Glu70~Thr245 with N-terminal His Tag
Isotype:	IgG
Specificity:	The antibody is a cavia polyclonal antibody raised against MMP13. It has been selected for its ability to recognize MMP13 in immunohistochemical staining and western blotting.
Cross-Reactivity:	Human, Mouse, Rat
Purification:	Antigen-specific affinity chromatography followed by Protein A affinity chromatography

Target Details

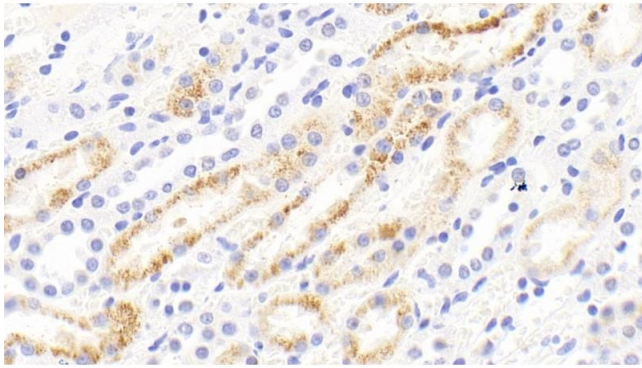
Target:	MMP13
Alternative Name:	Matrix Metalloproteinase 13 (MMP13 Products)
Background:	CLG3, Collagenase 3

Application Details

Application Notes:	Western blotting: 0.5-5 µg/mL Immunohistochemistry: 5-50 µg/mL Immunocytochemistry: 5-50 µg/mL Optimal working dilutions must be determined by end user.
Comment:	The thermal stability is described by the loss rate. The loss rate was determined by accelerated thermal degradation test, that is, incubate the protein at 37°C for 48h, and no obvious degradation and precipitation were observed. The loss rate is less than 5% within the expiration date under appropriate storage condition.
Restrictions:	For Research Use only

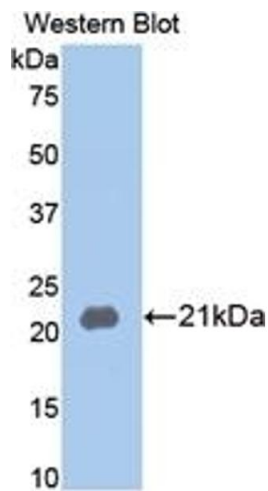
Handling

Format:	Liquid
Buffer:	PBS, pH 7.4, containing 0.02 % Sodium azide, 50 % glycerol.
Preservative:	Sodium azide
Precaution of Use:	This product contains Sodium azide: a POISONOUS AND HAZARDOUS SUBSTANCE which should be handled by trained staff only.
Storage:	4 °C,-20 °C
Storage Comment:	Store at 4°C for frequent use. Stored at -20°C in a manual defrost freezer for two year without detectable loss of activity. Avoid repeated freeze-thaw cycles.
Expiry Date:	24 months



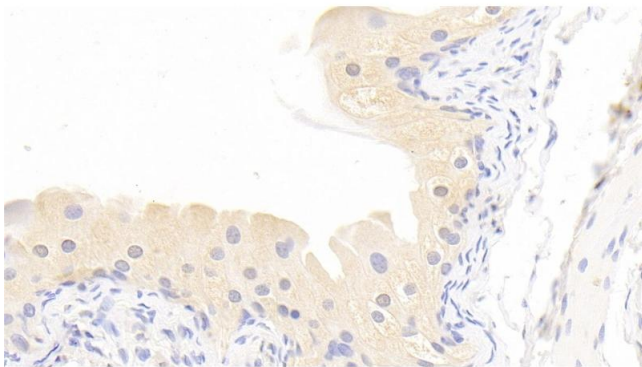
Immunohistochemistry

Image 1. Detection of MMP13 in Rabbit Kidney Tissue using Polyclonal Antibody to Matrix Metalloproteinase 13 (MMP13)



Western Blotting

Image 2. Detection of Recombinant MMP13, Rabbit using Polyclonal Antibody to Matrix Metalloproteinase 13 (MMP13)



Immunohistochemistry

Image 3. Detection of MMP13 in Rabbit Bladder Tissue using Polyclonal Antibody to Matrix Metalloproteinase 13 (MMP13)