

Datasheet for ABIN7437779  
**anti-PRAME antibody (AA 416-502)**

## 7 Images

[Go to Product page](#)

## Overview

Quantity:	100 µL
Target:	PRAME
Binding Specificity:	AA 416-502
Reactivity:	Human
Host:	Rabbit
Clonality:	Polyclonal
Conjugate:	This PRAME antibody is un-conjugated
Application:	Western Blotting (WB), Immunohistochemistry (IHC), Immunoprecipitation (IP), Immunocytochemistry (ICC)

## Product Details

Purpose:	Polyclonal Antibody to Preferentially Expressed Antigen In Melanoma (PRAME)
Immunogen:	Recombinant Preferentially Expressed Antigen In Melanoma (PRAME) corresponding to Asn416~Leu502 (Accession # P78395)
Isotype:	IgG
Specificity:	The antibody is a rabbit polyclonal antibody raised against PRAME. It has been selected for its ability to recognize PRAME in immunohistochemical staining and western blotting.
Cross-Reactivity:	Pig
Purification:	Antigen-specific affinity chromatography followed by Protein A affinity chromatography

## Target Details

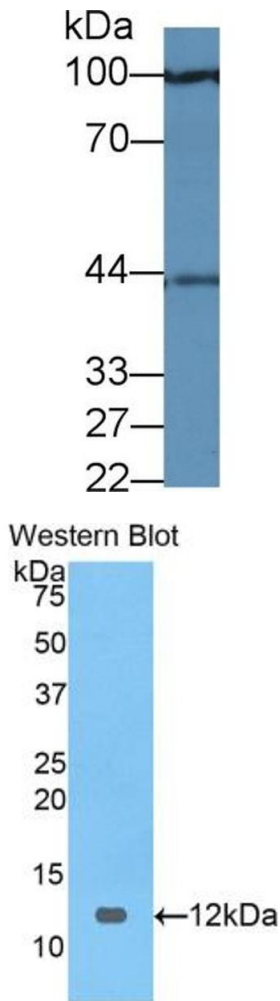
Target:	PRAME
Alternative Name:	Preferentially Expressed Antigen In Melanoma ( <a href="#">PRAME Products</a> )
Background:	MAPE, OIP4, CT130, Cancer/Testis Antigen 130, Opa-interacting protein 4, Melanoma antigen preferentially expressed in tumors
Pathways:	<a href="#">Retinoic Acid Receptor Signaling Pathway</a> , <a href="#">Nuclear Hormone Receptor Binding</a>

## Application Details

Application Notes:	Western blotting: 0.5-2 µg/mL Immunohistochemistry: 5-20 µg/mL Immunocytochemistry: 5-20 µg/mL Optimal working dilutions must be determined by end user.
Comment:	The thermal stability is described by the loss rate. The loss rate was determined by accelerated thermal degradation test, that is, incubate the protein at 37°C for 48h, and no obvious degradation and precipitation were observed. The loss rate is less than 5% within the expiration date under appropriate storage condition.
Restrictions:	For Research Use only

## Handling

Format:	Liquid
Buffer:	PBS, pH 7.4, containing 0.01 % SKL, 1 mM DTT, 5 % Trehalose and Proclin300.
Preservative:	Dithiothreitol (DTT), ProClin
Precaution of Use:	This product contains ProClin and Dithiothreitol (DTT): POISONOUS AND HAZARDOUS SUBSTANCES which should be handled by trained staff only.
Storage:	4 °C, -20 °C
Storage Comment:	Store at 4°C for frequent use. Stored at -20°C in a manual defrost freezer for two year without detectable loss of activity. Avoid repeated freeze-thaw cycles.
Expiry Date:	24 months



#### Western Blotting

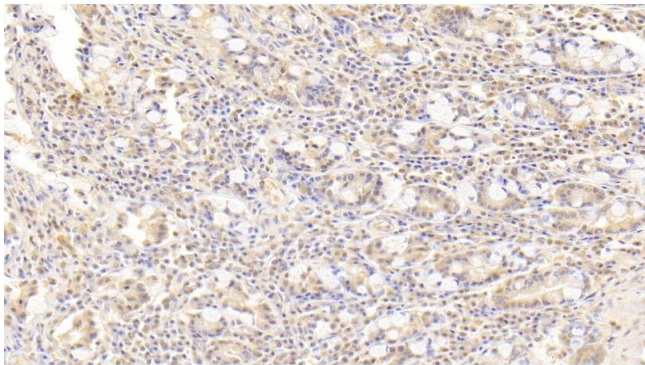
**Image 1.** Detection of PRAME in Human 293T cell lysate using Polyclonal Antibody to Preferentially Expressed Antigen In Melanoma (PRAME)

#### Western Blotting

**Image 2.** Detection of Recombinant PRAME, Human using Polyclonal Antibody to Preferentially Expressed Antigen In Melanoma (PRAME)

#### Immunohistochemistry

**Image 3.** Detection of PRAME in Human Small intestine Tissue using Polyclonal Antibody to Preferentially Expressed Antigen In Melanoma (PRAME)



Please check the [product details page](#) for more images. Overall 7 images are available for ABIN7437779.