

Datasheet for ABIN743783
anti-MEF2A antibody (pSer408)[Go to Product page](#)

6 Images

Overview

Quantity:	100 µL
Target:	MEF2A
Binding Specificity:	pSer408
Reactivity:	Human, Mouse, Rat
Host:	Rabbit
Clonality:	Polyclonal
Conjugate:	This MEF2A antibody is un-conjugated
Application:	Western Blotting (WB), ELISA, Immunohistochemistry (Paraffin-embedded Sections) (IHC (p)), Immunofluorescence (Cultured Cells) (IF (cc)), Immunofluorescence (Paraffin-embedded Sections) (IF (p)), Immunohistochemistry (Frozen Sections) (IHC (fro))

Product Details

Immunogen:	KLH conjugated synthetic phosphopeptide derived from human MEF2A around the phosphorylation site of Ser408
Isotype:	IgG
Cross-Reactivity:	Human, Mouse, Rat
Purification:	Purified by Protein A.

Target Details

Target:	MEF2A
Alternative Name:	MEF2A (MEF2A Products)

Target Details

Background:	<p>Synonyms: mef2, ADCAD1, RSRFC4, RSRFC9, Myocyte-specific enhancer factor 2A, Serum response factor-like protein 1, MEF2A</p> <p>Background: Transcriptional activator which binds specifically to the MEF2 element, 5'-YTA[AT](4)TAR-3', found in numerous muscle-specific genes. Also involved in the activation of numerous growth factor- and stress-induced genes. Mediates cellular functions not only in skeletal and cardiac muscle development, but also in neuronal differentiation and survival. Plays diverse roles in the control of cell growth, survival and apoptosis via p38 MAPK signaling in muscle-specific and/or growth factor-related transcription. In cerebellar granule neurons, phosphorylated and sumoylated MEF2A represses transcription of NUR77 promoting synaptic differentiation. Associates with chromatin to the ZNF16 promoter.</p>
Gene ID:	4205
UniProt:	Q02078
Pathways:	Neurotrophin Signaling Pathway , Activation of Innate immune Response , Carbohydrate Homeostasis , Chromatin Binding , Regulation of Muscle Cell Differentiation , Toll-Like Receptors Cascades

Application Details

Application Notes:	WB 1:300-5000 ELISA 1:500-1000 IHC-P 1:200-400 IHC-F 1:100-500 IF(IHC-P) 1:50-200 IF(IHC-F) 1:50-200 IF(ICC) 1:50-200
--------------------	---

Restrictions:	For Research Use only
---------------	-----------------------

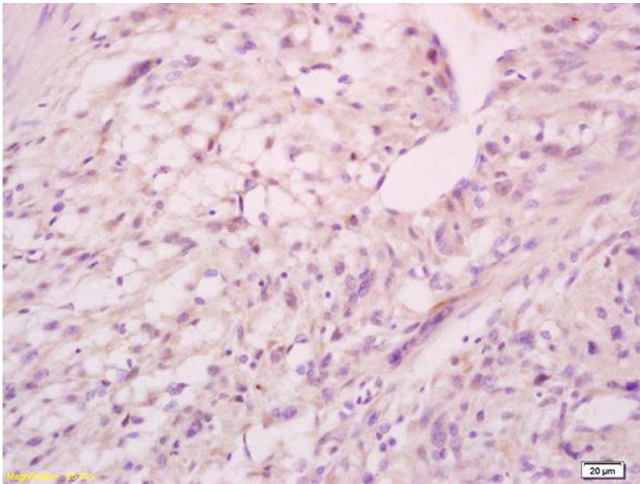
Handling

Format:	Liquid
Concentration:	1 µg/µL
Buffer:	0.01M TBS(pH 7.4) with 1 % BSA, 0.02 % Proclin300 and 50 % Glycerol.
Preservative:	ProClin
Precaution of Use:	This product contains ProClin: a POISONOUS AND HAZARDOUS SUBSTANCE, which should be

Handling

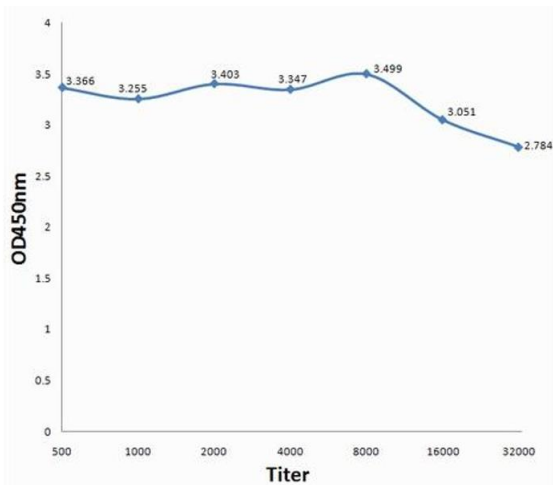
	handled by trained staff only.
Storage:	4 °C,-20 °C
Storage Comment:	Shipped at 4°C. Store at -20°C for one year. Avoid repeated freeze/thaw cycles.
Expiry Date:	12 months

Images



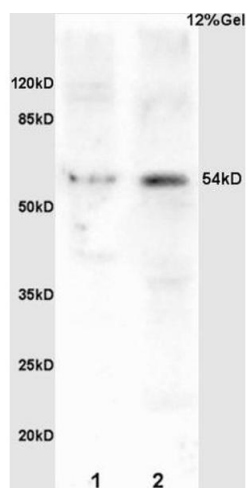
Immunohistochemistry

Image 1. Formalin-fixed and paraffin embedded human cervical carcinoma labeled with Anti-Phospho-MEF2A (Ser408) Polyclonal Antibody, Unconjugated (ABIN743783) at 1:200, followed by conjugation to the secondary antibody and DAB staining



ELISA

Image 2. Antigen: 0.2ug/100ul, Primary: Antiserum, 1:500, 1:1000, 1:2000, 1:4000, 1:8000, 1:16000, 1:32000, Secondary: HRP conjugated Goat-Anti-Rabbit IgG at 1: 5000, TMB staining, Read the data in MicroplateReader by 450nm



SDS-PAGE

Image 3. L1 mouse brain lysates L2 mouse embryo lysates probed with Anti Phospho-MEF2A (Ser408) Polyclonal Antibody, Unconjugated (ABIN743783) at 1:200 overnight at 4 °C. Followed by conjugation to secondary antibody at 1:3000 for 90 min at 37 °C. Predicted band 54kD. Observed band size:54kD.

Please check the [product details page](#) for more images. Overall 6 images are available for ABIN743783.