

Datasheet for ABIN7437938  
**anti-SEPP1 antibody (AA 60-274)**[Go to Product page](#)

## 1 Image

## Overview

Quantity:	100 µL
Target:	SEPP1
Binding Specificity:	AA 60-274
Reactivity:	Human
Host:	Rabbit
Clonality:	Polyclonal
Conjugate:	This SEPP1 antibody is un-conjugated
Application:	Immunohistochemistry (IHC), Western Blotting (WB), Immunoprecipitation (IP), Immunocytochemistry (ICC)

## Product Details

Purpose:	Polyclonal Antibody to Selenoprotein P1, Plasma (SEPP1)
Immunogen:	Recombinant Selenoprotein P1, Plasma (SEPP1) corresponding to Tyr60~Lys274 with N-terminal His Tag
Isotype:	IgG
Specificity:	The antibody is a rabbit polyclonal antibody raised against SEPP1. It has been selected for its ability to recognize SEPP1 in immunohistochemical staining and western blotting.
Purification:	Antigen-specific affinity chromatography followed by Protein A affinity chromatography

## Target Details

Target:	SEPP1
---------	-------

## Target Details

Alternative Name: Selenoprotein P1, Plasma ([SEPP1 Products](#))

Background: SEPP, SeP, SEP-P1, SELP

## Application Details

Application Notes: Western blotting: 0.5-2 µg/mL  
Immunohistochemistry: 5-20 µg/mL  
Immunocytochemistry: 5-20 µg/mL  
Optimal working dilutions must be determined by end user.

Comment: The thermal stability is described by the loss rate. The loss rate was determined by accelerated thermal degradation test, that is, incubate the protein at 37°C for 48h, and no obvious degradation and precipitation were observed. The loss rate is less than 5% within the expiration date under appropriate storage condition.

Restrictions: For Research Use only

## Handling

Format: Liquid

Buffer: 0.01M PBS, pH 7.4, containing 0.05 % Proclin-300, 50 % glycerol.

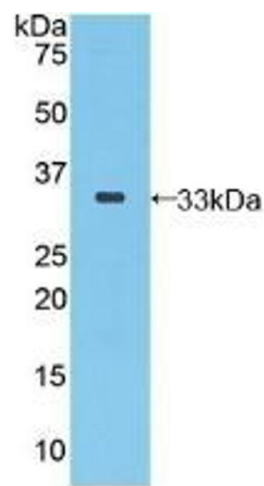
Preservative: ProClin

Precaution of Use: This product contains ProClin: a POISONOUS AND HAZARDOUS SUBSTANCE which should be handled by trained staff only.

Storage: 4 °C,-20 °C

Storage Comment: Store at 4°C for frequent use. Stored at -20°C in a manual defrost freezer for two year without detectable loss of activity. Avoid repeated freeze-thaw cycles.

Expiry Date: 24 months



Western Blotting

**Image 1.** Detection of Recombinant SEPP1, Human using Polyclonal Antibody to Selenoprotein P1, Plasma (SEPP1)