

Datasheet for ABIN7437947  
**anti-CTGF antibody (AA 80-200)**

## 7 Images

[Go to Product page](#)

## Overview

Quantity:	100 µL
Target:	CTGF
Binding Specificity:	AA 80-200
Reactivity:	Human
Host:	Rabbit
Clonality:	Polyclonal
Conjugate:	This CTGF antibody is un-conjugated
Application:	Western Blotting (WB), Immunohistochemistry (IHC), Immunoprecipitation (IP), Immunocytochemistry (ICC)

## Product Details

Purpose:	Polyclonal Antibody to Connective Tissue Growth Factor (CTGF)
Immunogen:	Recombinant Connective Tissue Growth Factor (CTGF) corresponding to Leu80~Leu200 with N-terminal His Tag
Isotype:	IgG
Specificity:	The antibody is a rabbit polyclonal antibody raised against CTGF. It has been selected for its ability to recognize CTGF in immunohistochemical staining and western blotting.
Cross-Reactivity:	Mouse, Rat
Purification:	Antigen-specific affinity chromatography followed by Protein A affinity chromatography

## Target Details

Target:	CTGF
Alternative Name:	Connective Tissue Growth Factor ( <a href="#">CTGF Products</a> )
Background:	CCN2, HCS24, IGFBP8, NOV2, Insulin-Like Growth Factor-Binding Protein 8, Hypertrophic Chondrocyte-Specific Protein 24, CCN Family Member 2
Pathways:	<a href="#">Regulation of Lipid Metabolism by PPARalpha</a> , <a href="#">Positive Regulation of Endopeptidase Activity</a> , <a href="#">Growth Factor Binding</a>

## Application Details

Application Notes:	Western blotting: 0.5-2 µg/mL 1:460-1860 Immunohistochemistry: 5-20 µg/mL 1:46-186 Immunocytochemistry: 5-20 µg/mL 1:46-186 Optimal working dilutions must be determined by end user.
Comment:	The thermal stability is described by the loss rate. The loss rate was determined by accelerated thermal degradation test, that is, incubate the protein at 37°C for 48h, and no obvious degradation and precipitation were observed. The loss rate is less than 5% within the expiration date under appropriate storage condition.
Restrictions:	For Research Use only

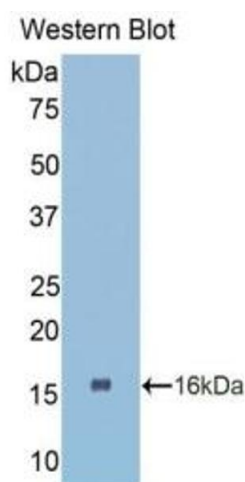
## Handling

Format:	Liquid
Buffer:	PBS, pH 7.4, containing 0.02 % Sodium azide, 50 % glycerol.
Preservative:	Sodium azide
Precaution of Use:	This product contains Sodium azide: a POISONOUS AND HAZARDOUS SUBSTANCE which should be handled by trained staff only.
Storage:	4 °C, -20 °C
Storage Comment:	Store at 4°C for frequent use. Stored at -20°C in a manual defrost freezer for two year without detectable loss of activity. Avoid repeated freeze-thaw cycles.
Expiry Date:	24 months



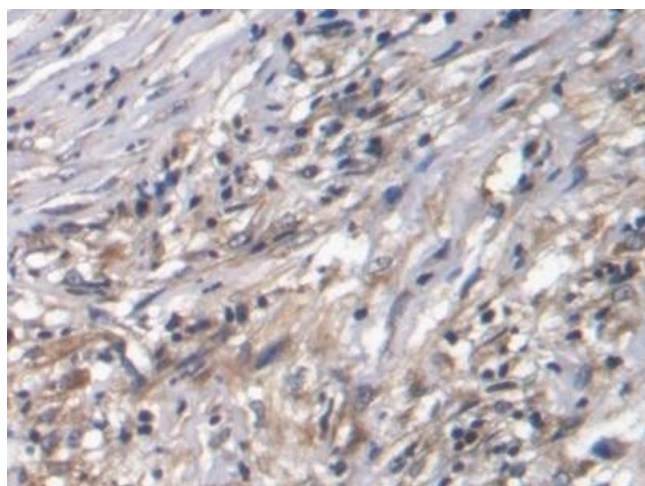
#### Western Blotting

**Image 1.** Detection of CTGF in Mouse Heart lysate using Polyclonal Antibody to Connective Tissue Growth Factor (CTGF)



#### Western Blotting

**Image 2.** Detection of Recombinant CTGF, Human using Polyclonal Antibody to Connective Tissue Growth Factor (CTGF)



#### Immunohistochemistry

**Image 3.** Detection of CTGF in Human Ovarian cancer Tissue using Polyclonal Antibody to Connective Tissue Growth Factor (CTGF)

Please check the [product details page](#) for more images. Overall 7 images are available for ABIN7437947.