

Datasheet for ABIN7437977
anti-ENO2/NSE antibody (AA 2-285)[Go to Product page](#)

4 Images

Overview

Quantity:	100 µL
Target:	ENO2/NSE (ENO2)
Binding Specificity:	AA 2-285
Reactivity:	Human
Host:	Rabbit
Clonality:	Polyclonal
Conjugate:	This ENO2/NSE antibody is un-conjugated
Application:	Western Blotting (WB), Immunohistochemistry (IHC), Immunoprecipitation (IP), Immunocytochemistry (ICC)

Product Details

Purpose:	Polyclonal Antibody to Enolase, Neuron Specific (NSE)
Immunogen:	Recombinant Enolase, Neuron Specific (NSE) corresponding to Ser2~Leu285+TILWSPLRTHLTRMIGLPGPSSQPCRPDCGVMT with N-terminal His Tag
Isotype:	IgG
Specificity:	The antibody is a rabbit polyclonal antibody raised against NSE. It has been selected for its ability to recognize NSE in immunohistochemical staining and western blotting.
Cross-Reactivity:	Mouse, Rat
Purification:	Antigen-specific affinity chromatography followed by Protein A affinity chromatography

Target Details

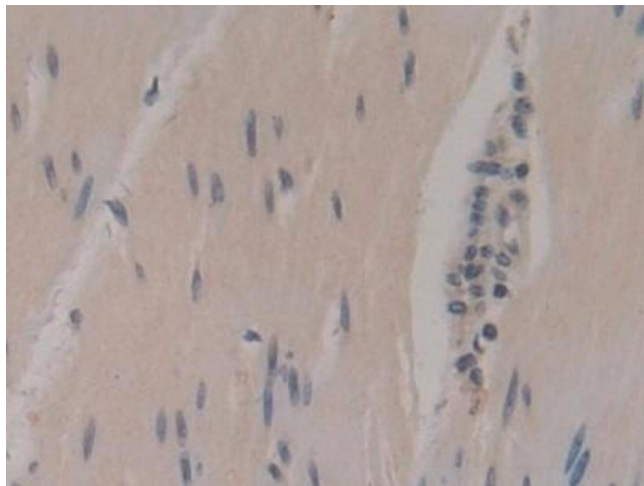
Target:	ENO2/NSE (ENO2)
Alternative Name:	Enolase, Neuron Specific (ENO2 Products)
Background:	ENO2, Enolase 2, Gamma Enolase, 2-phospho-D-glycerate hydro-lyase, Neural enolase

Application Details

Application Notes:	Western blotting: 0.5-2 µg/mL Immunohistochemistry: 5-20 µg/mL Immunocytochemistry: 5-20 µg/mL Optimal working dilutions must be determined by end user.
Comment:	The thermal stability is described by the loss rate. The loss rate was determined by accelerated thermal degradation test, that is, incubate the protein at 37°C for 48h, and no obvious degradation and precipitation were observed. The loss rate is less than 5% within the expiration date under appropriate storage condition.
Restrictions:	For Research Use only

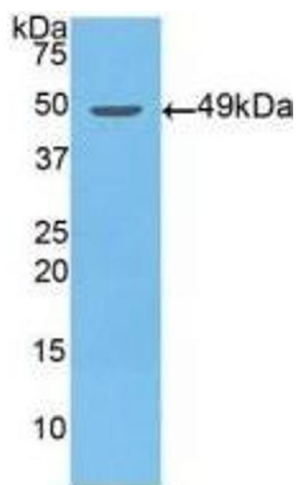
Handling

Format:	Liquid
Buffer:	0.01M PBS, pH 7.4, containing 0.05 % Proclin-300, 50 % glycerol.
Preservative:	ProClin
Precaution of Use:	This product contains ProClin: a POISONOUS AND HAZARDOUS SUBSTANCE which should be handled by trained staff only.
Storage:	4 °C,-20 °C
Storage Comment:	Store at 4°C for frequent use. Stored at -20°C in a manual defrost freezer for two year without detectable loss of activity. Avoid repeated freeze-thaw cycles.
Expiry Date:	24 months



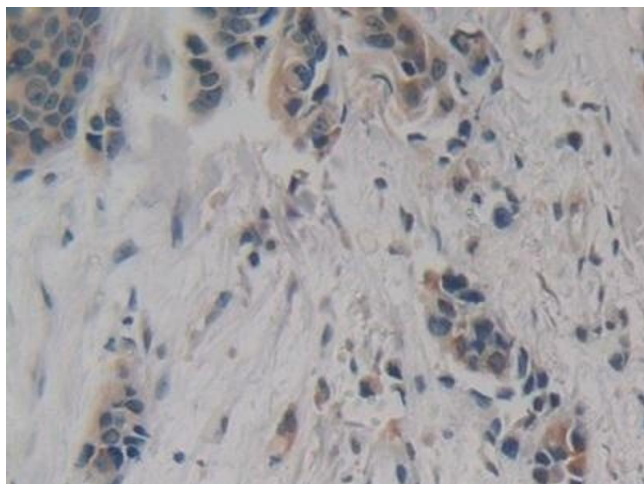
Immunohistochemistry

Image 1. Detection of NSE in Human Rectum Tissue using Polyclonal Antibody to Enolase, Neuron Specific (NSE)



Western Blotting

Image 2. Detection of Recombinant NSE, Human using Polyclonal Antibody to Enolase, Neuron Specific (NSE)



Immunohistochemistry

Image 3. Detection of NSE in Human Breast cancer Tissue using Polyclonal Antibody to Enolase, Neuron Specific (NSE)

Please check the [product details page](#) for more images. Overall 4 images are available for ABIN7437977.