

Datasheet for ABIN7438010
anti-HPSE antibody (AA 34-115)

5 Images

[Go to Product page](#)

Overview

Quantity:	100 µL
Target:	HPSE
Binding Specificity:	AA 34-115
Reactivity:	Human
Host:	Rabbit
Clonality:	Polyclonal
Conjugate:	This HPSE antibody is un-conjugated
Application:	Western Blotting (WB), Immunohistochemistry (IHC), Immunoprecipitation (IP), Immunocytochemistry (ICC)

Product Details

Purpose:	Polyclonal Antibody to Heparanase (HPSE)
Immunogen:	Recombinant Heparanase (HPSE) corresponding to Gln34~Arg115 with N-terminal His Tag
Isotype:	IgG
Specificity:	The antibody is a rabbit polyclonal antibody raised against HPSE. It has been selected for its ability to recognize HPSE in immunohistochemical staining and western blotting.
Cross-Reactivity:	Pig
Purification:	Antigen-specific affinity chromatography followed by Protein A affinity chromatography

Target Details

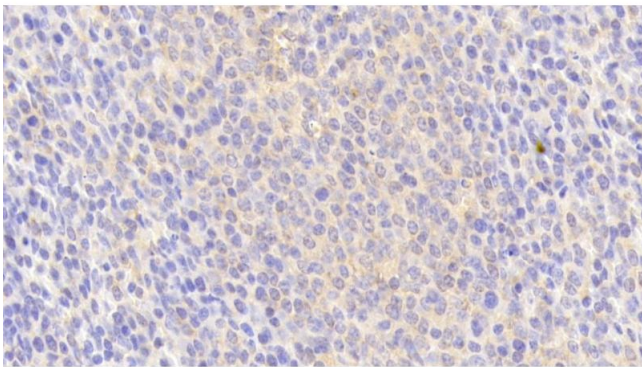
Target:	HPSE
Alternative Name:	Heparanase (HPSE Products)
Background:	HPA, HPR1, HPSE1, HSE1, Endo-glucuronidase,
Pathways:	Glycosaminoglycan Metabolic Process

Application Details

Application Notes:	Western blotting: 0.5-2 µg/mL Immunohistochemistry: 5-20 µg/mL Immunocytochemistry: 5-20 µg/mL Optimal working dilutions must be determined by end user.
Comment:	The thermal stability is described by the loss rate. The loss rate was determined by accelerated thermal degradation test, that is, incubate the protein at 37°C for 48h, and no obvious degradation and precipitation were observed. The loss rate is less than 5% within the expiration date under appropriate storage condition.
Restrictions:	For Research Use only

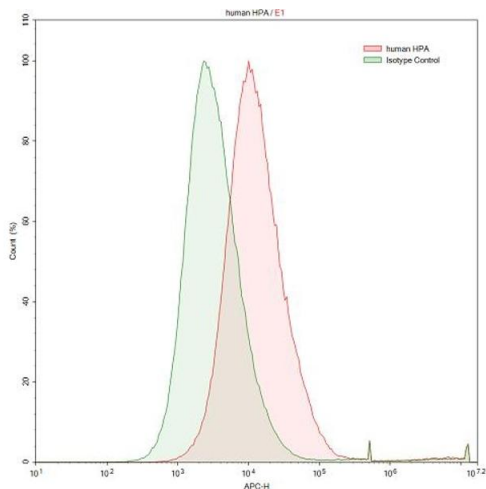
Handling

Format:	Liquid
Buffer:	PBS, pH 7.4, containing 0.02 % Sodium azide, 50 % glycerol.
Preservative:	Sodium azide
Precaution of Use:	This product contains Sodium azide: a POISONOUS AND HAZARDOUS SUBSTANCE which should be handled by trained staff only.
Storage:	4 °C,-20 °C
Storage Comment:	Store at 4°C for frequent use. Stored at -20°C in a manual defrost freezer for two year without detectable loss of activity. Avoid repeated freeze-thaw cycles.
Expiry Date:	24 months



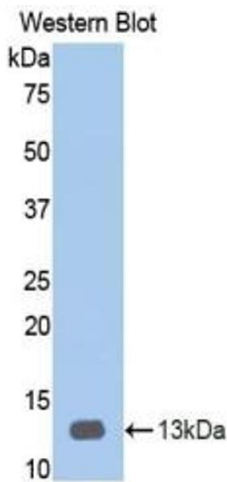
Immunohistochemistry

Image 1. Detection of HPSE in Human Spleen Tissue using Polyclonal Antibody to Heparanase (HPSE)



Flow Cytometry

Image 2. Detection of HPSE in HepG2 human hepatocellular carcinoma cell line using Polyclonal Antibody to Heparanase (HPSE)



Western Blotting

Image 3. Detection of Recombinant HPA, Human using Polyclonal Antibody to Heparanase (HPSE)

Please check the [product details page](#) for more images. Overall 5 images are available for ABIN7438010.