

Datasheet for ABIN7438106
anti-RXFP1 antibody (AA 260-409)

5 Images

[Go to Product page](#)

Overview

Quantity:	100 µL
Target:	RXFP1
Binding Specificity:	AA 260-409
Reactivity:	Human
Host:	Rabbit
Clonality:	Polyclonal
Conjugate:	This RXFP1 antibody is un-conjugated
Application:	Western Blotting (WB), Immunohistochemistry (IHC), Immunoprecipitation (IP), Immunocytochemistry (ICC)

Product Details

Purpose:	Polyclonal Antibody to Relaxin/Insulin Like Family Peptide Receptor 1 (RXFP1)
Immunogen:	Recombinant Relaxin/Insulin Like Family Peptide Receptor 1 (RXFP1) corresponding to Pro260~Met409 (Accession # Q9HBX9)
Isotype:	IgG
Specificity:	The antibody is a rabbit polyclonal antibody raised against RXFP1. It has been selected for its ability to recognize RXFP1 in immunohistochemical staining and western blotting.
Cross-Reactivity:	Mouse
Purification:	Antigen-specific affinity chromatography followed by Protein A affinity chromatography

Target Details

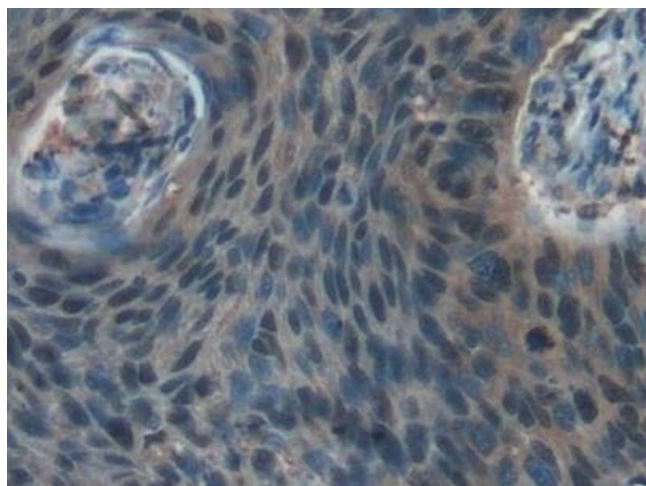
Target:	RXFP1
Alternative Name:	Relaxin/Insulin Like Family Peptide Receptor 1 (RXFP1 Products)
Background:	RXFP1, RXFPR1, LGR7, LGR7.1, LGR7.10, LGR7.2, Relaxin receptor 1, Relaxin family peptide receptor 1, Leucine-Rich Repeat-Containing G Protein-Coupled Receptor 7
Pathways:	Myometrial Relaxation and Contraction

Application Details

Application Notes:	Western blotting: 0.5-2 µg/mL Immunohistochemistry: 5-20 µg/mL Immunocytochemistry: 5-20 µg/mL Optimal working dilutions must be determined by end user.
Comment:	The thermal stability is described by the loss rate. The loss rate was determined by accelerated thermal degradation test, that is, incubate the protein at 37°C for 48h, and no obvious degradation and precipitation were observed. The loss rate is less than 5% within the expiration date under appropriate storage condition.
Restrictions:	For Research Use only

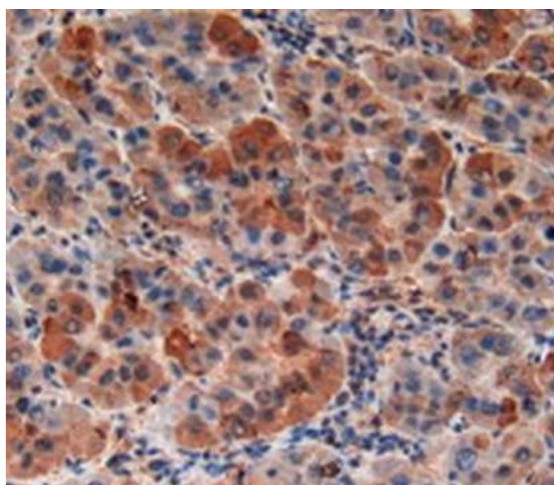
Handling

Format:	Liquid
Buffer:	0.01M PBS, pH 7.4, containing 0.05 % Proclin-300, 50 % glycerol.
Preservative:	ProClin
Precaution of Use:	This product contains ProClin: a POISONOUS AND HAZARDOUS SUBSTANCE which should be handled by trained staff only.
Storage:	4 °C,-20 °C
Storage Comment:	Store at 4°C for frequent use. Stored at -20°C in a manual defrost freezer for two year without detectable loss of activity. Avoid repeated freeze-thaw cycles.
Expiry Date:	24 months



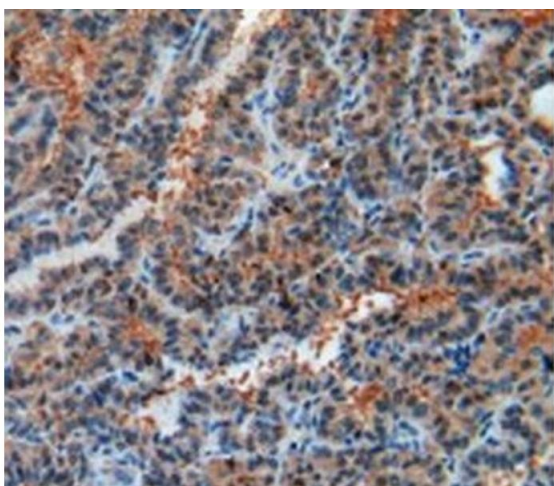
Immunohistochemistry

Image 1. Detection of RXFP1 in Human Esophagus cancer Tissue using Polyclonal Antibody to Relaxin/Insulin Like Family Peptide Receptor 1 (RXFP1)



Immunohistochemistry

Image 2. Detection of RXFP1 in Human Liver Cancer Tissue using Polyclonal Antibody to Relaxin/Insulin Like Family Peptide Receptor 1 (RXFP1)



Immunohistochemistry

Image 3. Detection of RXFP1 in Human Thyroid Cancer Tissue using Polyclonal Antibody to Relaxin/Insulin Like Family Peptide Receptor 1 (RXFP1)

Please check the [product details page](#) for more images. Overall 5 images are available for ABIN7438106.