

Datasheet for ABIN743813
anti-MEK1/2 antibody (pSer218, pSer222)



[Go to Product page](#)

1 Image

Overview

Quantity:	100 µL
Target:	MEK1/2 (MAP2K1/2)
Binding Specificity:	pSer218, pSer222
Reactivity:	Human
Host:	Rabbit
Clonality:	Polyclonal
Conjugate:	This MEK1/2 antibody is un-conjugated
Application:	Western Blotting (WB), ELISA

Product Details

Immunogen:	KLH conjugated synthetic phosphopeptide derived from human MEK1 around the phosphorylation site of Ser218/222
Isotype:	IgG
Specificity:	These phosphorylation sites are homologous to Ser222 + Ser226 in MEK2 and are the same across the listed species.
Cross-Reactivity:	Human
Predicted Reactivity:	Mouse,Rat,Dog,Cow,Pig,Chicken,Rabbit
Purification:	Purified by Protein A.

Target Details

Target:	MEK1/2 (MAP2K1/2)
Alternative Name:	MEK1/2 + (MAP2K1/2 Products)
Background:	<p>Synonyms: MAP2K1phospho S218/S222, Dual specificity mitogen activated protein kinase kinase 1, ERK activator kinase 1, MAP kinase kinase 1, MAP kinase/Erk kinase 1, MAP/Erk kinase 1, Map2K1, MAPK/ERK kinase 1, MAPKK 1, MAPKK1, MEK 1, MEKK1, Mitogen activated protein kinase kinase 1, MKK 1, MKK1, PRKMK 1, PRKMK1, Protein kinase mitogen activated kinase 1 MAP kinase kinase 1, Protein kinase mitogen activated kinase 1, Protein kinase mitogen activated, kinase 1.</p> <p>Background: The protein encoded by this gene is a member of the dual specificity protein kinase family, which acts as a mitogen-activated protein (MAP) kinase kinase. MAP kinases, also known as extracellular signal-regulated kinases (ERKs), act as an integration point for multiple biochemical signals. This protein kinase lies upstream of MAP kinases and stimulates the enzymatic activity of MAP kinases upon wide variety of extra- and intracellular signals. As an essential component of MAP kinase signal transduction pathway, this kinase is involved in many cellular processes such as proliferation, differentiation, transcription regulation and development.</p>
Gene ID:	56045605

Application Details

Application Notes:	WB 1:300-5000 ELISA 1:500-1000
Restrictions:	For Research Use only

Handling

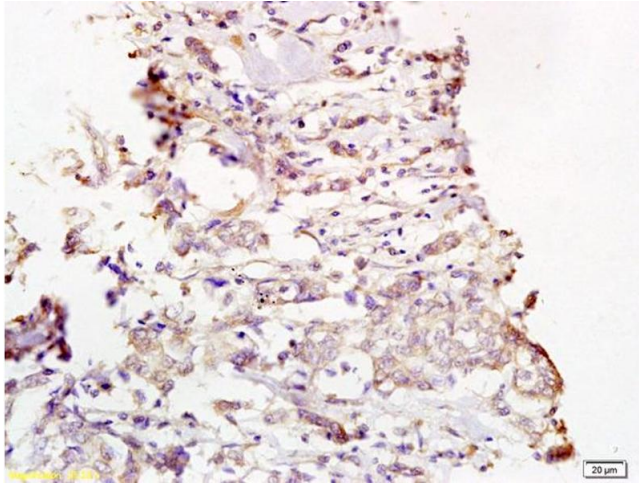
Format:	Liquid
Concentration:	1 µg/µL
Buffer:	0.01M TBS(pH 7.4) with 1 % BSA, 0.02 % Proclin300 and 50 % Glycerol.
Preservative:	ProClin
Precaution of Use:	This product contains ProClin: a POISONOUS AND HAZARDOUS SUBSTANCE, which should be handled by trained staff only.
Storage:	4 °C,-20 °C

Handling

Storage Comment: Shipped at 4°C. Store at -20°C for one year. Avoid repeated freeze/thaw cycles.

Expiry Date: 12 months

Images



Immunohistochemistry

Image 1. Formalin-fixed and paraffin embedded human breast carcinoma labeled with Rabbit Anti Phospho-MEK1/2(Ser218/222) Polyclonal Antibody, Unconjugated (ABIN743813) at 1:200 followed by conjugation to the secondary antibody and DAB staining