

Datasheet for ABIN7438160
anti-LAMa4 antibody (AA 457-630)

10 Images

[Go to Product page](#)

Overview

Quantity:	100 µL
Target:	LAMa4
Binding Specificity:	AA 457-630
Reactivity:	Mouse
Host:	Rabbit
Clonality:	Polyclonal
Conjugate:	This LAMa4 antibody is un-conjugated
Application:	Western Blotting (WB), Immunohistochemistry (IHC), Immunoprecipitation (IP), Immunocytochemistry (ICC)

Product Details

Purpose:	Polyclonal Antibody to Laminin Alpha 4 (LAMa4)
Immunogen:	Recombinant Laminin Alpha 4 (LAMa4) corresponding to His457~Ala630 (Accession # P97927)
Isotype:	IgG
Specificity:	The antibody is a rabbit polyclonal antibody raised against LAMa4. It has been selected for its ability to recognize LAMa4 in immunohistochemical staining and western blotting.
Cross-Reactivity:	Human, Rat
Purification:	Antigen-specific affinity chromatography followed by Protein A affinity chromatography

Target Details

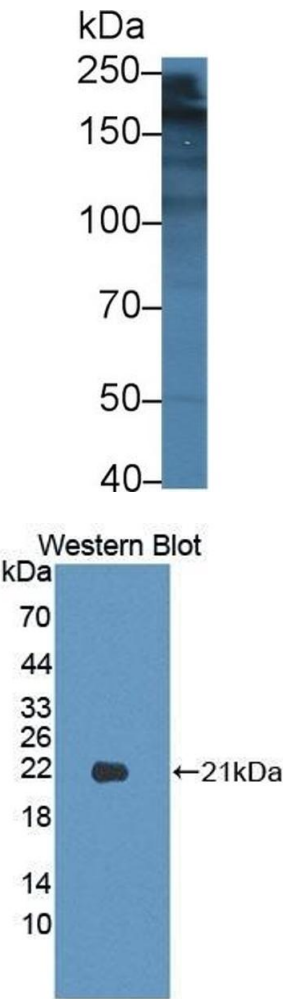
Target:	LAMa4
Alternative Name:	Laminin Alpha 4 (LAMa4 Products)
Background:	LAM-A4, LAMA3
Pathways:	Brown Fat Cell Differentiation

Application Details

Application Notes:	Western blotting: 0.5-2 µg/mL Immunohistochemistry: 5-20 µg/mL Immunocytochemistry: 5-20 µg/mL Optimal working dilutions must be determined by end user.
Comment:	The thermal stability is described by the loss rate. The loss rate was determined by accelerated thermal degradation test, that is, incubate the protein at 37°C for 48h, and no obvious degradation and precipitation were observed. The loss rate is less than 5% within the expiration date under appropriate storage condition.
Restrictions:	For Research Use only

Handling

Format:	Liquid
Buffer:	PBS, pH 7.4, containing 0.02 % Sodium azide, 50 % glycerol.
Preservative:	Sodium azide
Precaution of Use:	This product contains Sodium azide: a POISONOUS AND HAZARDOUS SUBSTANCE which should be handled by trained staff only.
Storage:	4 °C, -20 °C
Storage Comment:	Store at 4°C for frequent use. Stored at -20°C in a manual defrost freezer for two year without detectable loss of activity. Avoid repeated freeze-thaw cycles.
Expiry Date:	24 months

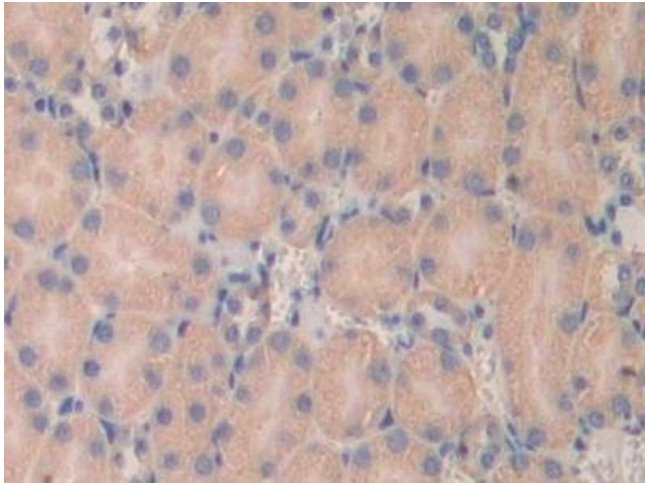


Western Blotting

Image 1. Detection of LAMa4 in Mouse Lung lysate using Polyclonal Antibody to Laminin Alpha 4 (LAMa4)

Western Blotting

Image 2. Detection of Recombinant LAMa4, Mouse using Polyclonal Antibody to Laminin Alpha 4 (LAMa4)



Immunohistochemistry

Image 3. Detection of LAMa4 in Mouse Kidney Tissue using Polyclonal Antibody to Laminin Alpha 4 (LAMa4)

Please check the [product details page](#) for more images. Overall 10 images are available for ABIN7438160.