

Datasheet for ABIN7438268

anti-PLA2G4A antibody (AA 563-749)

6 Images

[Go to Product page](#)

Overview

Quantity:	100 µL
Target:	PLA2G4A
Binding Specificity:	AA 563-749
Reactivity:	Human
Host:	Rabbit
Clonality:	Polyclonal
Conjugate:	This PLA2G4A antibody is un-conjugated
Application:	Western Blotting (WB), Immunohistochemistry (IHC), Immunoprecipitation (IP), Immunocytochemistry (ICC)

Product Details

Purpose:	Polyclonal Antibody to Cytosolic Phospholipase A2 (PLA2G4)
Immunogen:	Recombinant Cytosolic Phospholipase A2 (PLA2G4) corresponding to Arg563~Ala749 with N-terminal His Tag
Isotype:	IgG
Specificity:	The antibody is a rabbit polyclonal antibody raised against PLA2G4. It has been selected for its ability to recognize PLA2G4 in immunohistochemical staining and western blotting.
Cross-Reactivity:	Mouse, Rat
Purification:	Antigen-specific affinity chromatography followed by Protein A affinity chromatography

Target Details

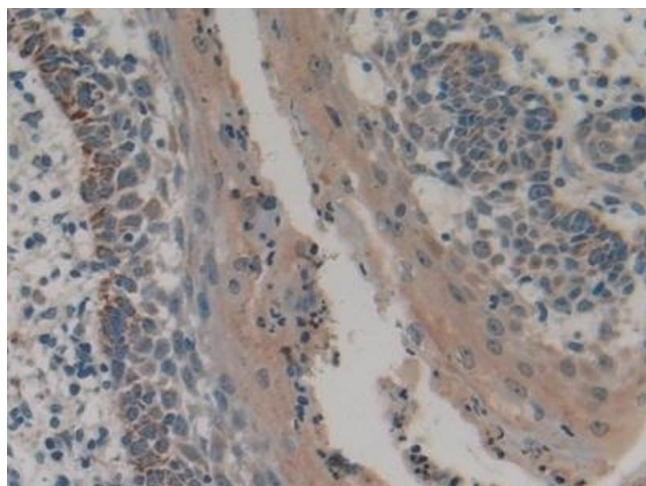
Target:	PLA2G4A
Alternative Name:	Cytosolic Phospholipase A2 (PLA2G4A Products)
Background:	C-PLA2, cPLA2, PLA2G4A, Phospholipase A2, Cytosolic, Phospholipase A2,Group IV(Cytosolic,Calcium-Dependent), Phosphatidylcholine 2-acylhydrolase, Lysophospholipase
Pathways:	Inositol Metabolic Process , G-protein mediated Events , VEGF Signaling

Application Details

Application Notes:	Western blotting: 1-5 µg/mL Immunocytochemistry in formalin fixed cells: 5-20 µg/mL Immunohistochemistry in formalin fixed frozen section: 5-20 µg/mL Immunohistochemistry in paraffin section: 5-20 µg/mL Enzyme-linked Immunosorbent Assay: 0.05-2 µg/mL Optimal working dilutions must be determined by end user.
Comment:	The thermal stability is described by the loss rate. The loss rate was determined by accelerated thermal degradation test, that is, incubate the protein at 37°C for 48h, and no obvious degradation and precipitation were observed. The loss rate is less than 5% within the expiration date under appropriate storage condition.
Restrictions:	For Research Use only

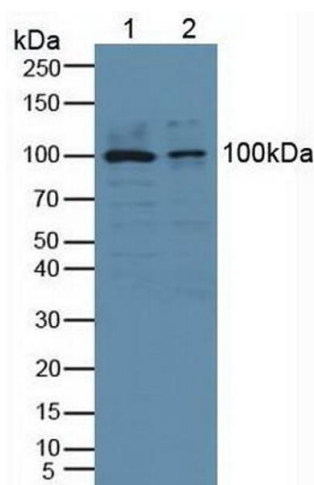
Handling

Format:	Liquid
Buffer:	0.01M PBS, pH 7.4, containing 0.05 % Proclin-300, 50 % glycerol.
Preservative:	ProClin
Precaution of Use:	This product contains ProClin: a POISONOUS AND HAZARDOUS SUBSTANCE which should be handled by trained staff only.
Storage:	4 °C,-20 °C
Storage Comment:	Store at 4°C for frequent use. Stored at -20°C in a manual defrost freezer for two year without detectable loss of activity. Avoid repeated freeze-thaw cycles.
Expiry Date:	24 months



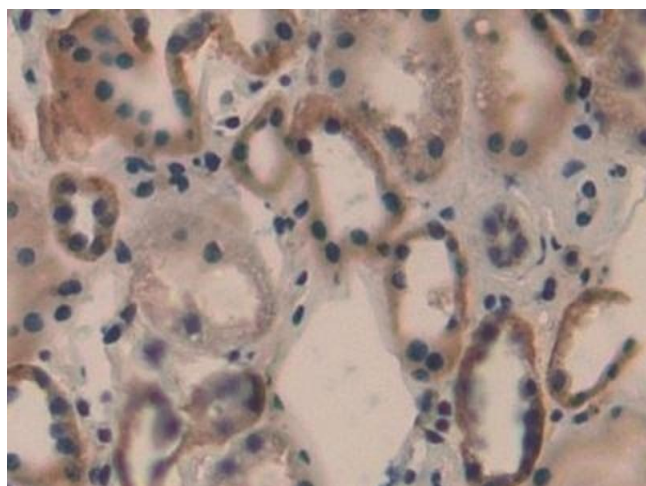
Immunohistochemistry

Image 1. Detection of PLA2G4 in Human Skin cancer Tissue using Polyclonal Antibody to Cytosolic Phospholipase A2 (PLA2G4)



Western Blotting

Image 2. Detection of Recombinant cPLA2, Human using Polyclonal Antibody to Cytosolic Phospholipase A2 (PLA2G4)



Immunohistochemistry

Image 3. Detection of PLA2G4 in Human Kidney Tissue using Polyclonal Antibody to Cytosolic Phospholipase A2 (PLA2G4)

Please check the [product details page](#) for more images. Overall 6 images are available for ABIN7438268.