

Datasheet for ABIN7438277  
**anti-GLDC antibody (AA 81-268)**

## 8 Images

[Go to Product page](#)

## Overview

Quantity:	100 µL
Target:	GLDC
Binding Specificity:	AA 81-268
Reactivity:	Human
Host:	Rabbit
Clonality:	Polyclonal
Conjugate:	This GLDC antibody is un-conjugated
Application:	Western Blotting (WB), Immunohistochemistry (IHC), Immunoprecipitation (IP), Immunocytochemistry (ICC)

## Product Details

Purpose:	Polyclonal Antibody to Glycine Dehydrogenase (GLDC)
Immunogen:	Recombinant Glycine Dehydrogenase (GLDC) corresponding to Thr81~Asp268 (Accession # P23378)
Isotype:	IgG
Specificity:	The antibody is a rabbit polyclonal antibody raised against GLDC. It has been selected for its ability to recognize GLDC in immunohistochemical staining and western blotting.
Cross-Reactivity:	Mouse, Pig, Rat
Purification:	Antigen-specific affinity chromatography followed by Protein A affinity chromatography

## Target Details

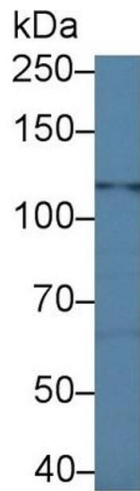
Target:	GLDC
Alternative Name:	Glycine Dehydrogenase ( <a href="#">GLDC Products</a> )
Background:	GCSP, NKH, Decarboxylating, Glycine Decarboxylase, Glycine Cleavage System Protein P, Glycine dehydrogenase (aminomethyl-transferring)

## Application Details

Application Notes:	Western blotting: 0.5-3 µg/mL Immunohistochemistry: 5-30 µg/mL Immunocytochemistry: 5-30 µg/mL Optimal working dilutions must be determined by end user.
Comment:	The thermal stability is described by the loss rate. The loss rate was determined by accelerated thermal degradation test, that is, incubate the protein at 37°C for 48h, and no obvious degradation and precipitation were observed. The loss rate is less than 5% within the expiration date under appropriate storage condition.
Restrictions:	For Research Use only

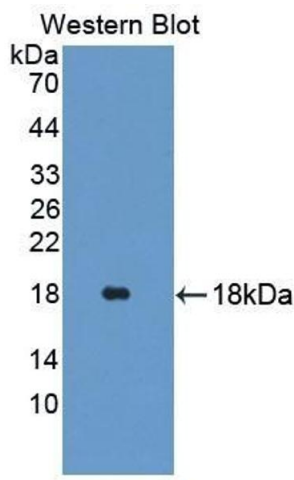
## Handling

Format:	Liquid
Buffer:	PBS, pH 7.4, containing 0.02 % Sodium azide, 50 % glycerol.
Preservative:	Sodium azide
Precaution of Use:	This product contains Sodium azide: a POISONOUS AND HAZARDOUS SUBSTANCE which should be handled by trained staff only.
Storage:	4 °C, -20 °C
Storage Comment:	Store at 4°C for frequent use. Stored at -20°C in a manual defrost freezer for two year without detectable loss of activity. Avoid repeated freeze-thaw cycles.
Expiry Date:	24 months



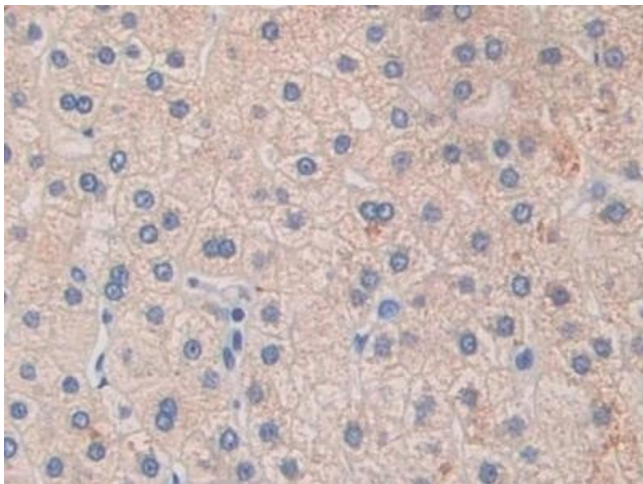
Western Blotting

**Image 1.** Detection of GLDC in Porcine Liver lysate using Polyclonal Antibody to Glycine Dehydrogenase (GLDC)



Western Blotting

**Image 2.** Detection of Recombinant GLDC, Human using Polyclonal Antibody to Glycine Dehydrogenase (GLDC)



Immunohistochemistry

**Image 3.** Detection of GLDC in Human Liver cancer Tissue using Polyclonal Antibody to Glycine Dehydrogenase (GLDC)

Please check the [product details page](#) for more images. Overall 8 images are available for ABIN7438277.