

Datasheet for ABIN7438409

anti-Retinoblastoma 1 antibody (AA 639-778)



[Go to Product page](#)

3 Images

Overview

Quantity:	100 µL
Target:	Retinoblastoma 1 (RB1)
Binding Specificity:	AA 639-778
Reactivity:	Human
Host:	Rabbit
Clonality:	Polyclonal
Conjugate:	This Retinoblastoma 1 antibody is un-conjugated
Application:	Western Blotting (WB), Immunohistochemistry (IHC), Immunoprecipitation (IP), Immunocytochemistry (ICC)

Product Details

Purpose:	Polyclonal Antibody to Retinoblastoma Protein 1 (RB1)
Immunogen:	Recombinant Retinoblastoma Protein 1 (RB1) corresponding to Gln639~Thr778 (Accession # P06400) with N-terminal His and GST Tag
Isotype:	IgG
Specificity:	The antibody is a rabbit polyclonal antibody raised against RB1. It has been selected for its ability to recognize RB1 in immunohistochemical staining and western blotting.
Cross-Reactivity:	Mouse, Rat
Purification:	Antigen-specific affinity chromatography followed by Protein A affinity chromatography

Target Details

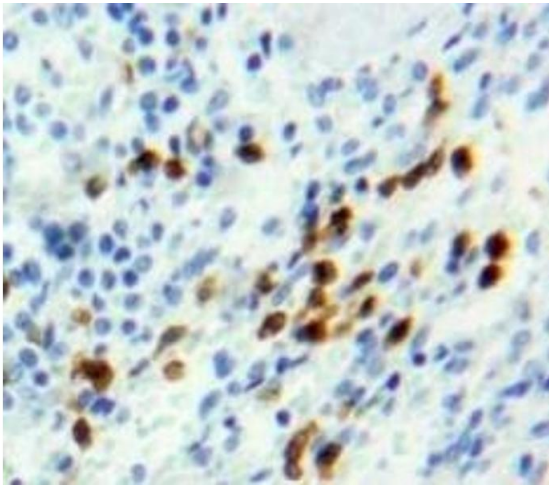
Target:	Retinoblastoma 1 (RB1)
Alternative Name:	Retinoblastoma Protein 1 (RB1 Products)
Background:	OSRC, PRB, p105-Rb, pp110, Including Osteosarcoma, Retinoblastoma-associated protein
Pathways:	Cell Division Cycle , Intracellular Steroid Hormone Receptor Signaling Pathway , Mitotic G1-G1/S Phases , DNA Replication , Maintenance of Protein Location , Synthesis of DNA , Autophagy

Application Details

Application Notes:	Western blotting: 0.5-2 µg/mL Immunohistochemistry: 5-20 µg/mL Immunocytochemistry: 5-20 µg/mL Optimal working dilutions must be determined by end user.
Comment:	The thermal stability is described by the loss rate. The loss rate was determined by accelerated thermal degradation test, that is, incubate the protein at 37°C for 48h, and no obvious degradation and precipitation were observed. The loss rate is less than 5% within the expiration date under appropriate storage condition.
Restrictions:	For Research Use only

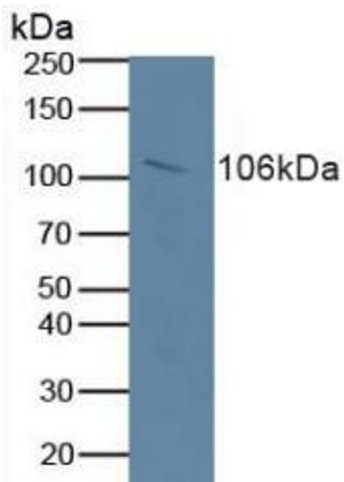
Handling

Format:	Liquid
Buffer:	0.01M PBS, pH 7.4, containing 0.05 % Proclin-300, 50 % glycerol.
Preservative:	ProClin
Precaution of Use:	This product contains ProClin: a POISONOUS AND HAZARDOUS SUBSTANCE which should be handled by trained staff only.
Storage:	4 °C,-20 °C
Storage Comment:	Store at 4°C for frequent use. Stored at -20°C in a manual defrost freezer for two year without detectable loss of activity. Avoid repeated freeze-thaw cycles.
Expiry Date:	24 months



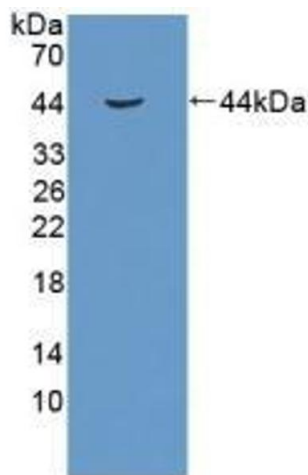
Immunohistochemistry

Image 1. #VALUE!



Western Blotting

Image 2. Detection of RB1 in Human Serum using Polyclonal Antibody to Retinoblastoma Protein 1 (RB1)



Western Blotting

Image 3. Detection of Recombinant RB1, Human using Polyclonal Antibody to Retinoblastoma Protein 1 (RB1)