

Datasheet for ABIN7438418  
**anti-L1CAM antibody (AA 526-690)**

## 3 Images

[Go to Product page](#)

## Overview

Quantity:	100 µL
Target:	L1CAM
Binding Specificity:	AA 526-690
Reactivity:	Human
Host:	Rabbit
Clonality:	Polyclonal
Conjugate:	This L1CAM antibody is un-conjugated
Application:	Western Blotting (WB), Immunohistochemistry (IHC), Immunoprecipitation (IP), Immunocytochemistry (ICC)

## Product Details

Purpose:	Polyclonal Antibody to L1-Cell Adhesion Molecule (L1CAM)
Immunogen:	Recombinant L1-Cell Adhesion Molecule (L1CAM) corresponding to Ser526~Thr690 with N-terminal His Tag
Isotype:	IgG
Specificity:	The antibody is a rabbit polyclonal antibody raised against L1CAM. It has been selected for its ability to recognize L1CAM in immunohistochemical staining and western blotting.
Cross-Reactivity:	Mouse, Pig, Rat
Purification:	Antigen-specific affinity chromatography followed by Protein A affinity chromatography

## Target Details

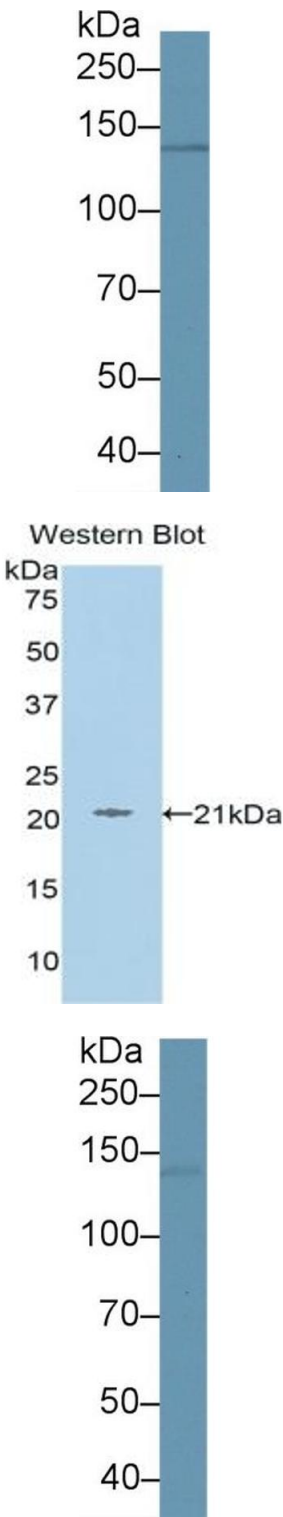
Target:	L1CAM
Alternative Name:	L1-Cell Adhesion Molecule ( <a href="#">L1CAM Products</a> )
Background:	CD171, L1-CAM, CAML1, HSAS, HSAS1, MASA, MIC5, N-CAML1, S10, SPG1, Antigen Identified By Monoclonal Antibody R1
Pathways:	<a href="#">Synaptic Membrane</a>

## Application Details

Application Notes:	Western blotting: 0.5-2 µg/mL Immunohistochemistry: 5-20 µg/mL Immunocytochemistry: 5-20 µg/mL Optimal working dilutions must be determined by end user.
Comment:	The thermal stability is described by the loss rate. The loss rate was determined by accelerated thermal degradation test, that is, incubate the protein at 37°C for 48h, and no obvious degradation and precipitation were observed. The loss rate is less than 5% within the expiration date under appropriate storage condition.
Restrictions:	For Research Use only

## Handling

Format:	Liquid
Buffer:	PBS, pH 7.4, containing 0.02 % Sodium azide, 50 % glycerol.
Preservative:	Sodium azide
Precaution of Use:	This product contains Sodium azide: a POISONOUS AND HAZARDOUS SUBSTANCE which should be handled by trained staff only.
Storage:	4 °C,-20 °C
Storage Comment:	Store at 4°C for frequent use. Stored at -20°C in a manual defrost freezer for two year without detectable loss of activity. Avoid repeated freeze-thaw cycles.
Expiry Date:	24 months



Western Blotting

**Image 1.** Detection of L1CAM in Porcine Cerebrum lysate using Polyclonal Antibody to L1-Cell Adhesion Molecule (L1CAM)

Western Blotting

**Image 2.** Detection of Recombinant L1CAM, Human using Polyclonal Antibody to L1-Cell Adhesion Molecule (L1CAM)

Western Blotting

**Image 3.** Detection of L1CAM in Porcine Kidney lysate using Polyclonal Antibody to L1-Cell Adhesion Molecule (L1CAM)