

Datasheet for ABIN7438433  
**anti-CA2 antibody (AA 1-260)**

## 7 Images

[Go to Product page](#)

## Overview

|                      |   |
|----------------------|---|
| Quantity:            | 100 µL  |
| Target:              | CA2   |
| Binding Specificity: | AA 1-260  |
| Reactivity:          | Rat   |
| Host:                | Rabbit  |
| Clonality:           | Polyclonal  |
| Conjugate:           | This CA2 antibody is un-conjugated  |
| Application:         | Western Blotting (WB), Immunohistochemistry (IHC), Immunoprecipitation (IP),<br>Immunocytochemistry (ICC) |

## Product Details

|                   |  |
|-------------------|--|
| Purpose:          | Polyclonal Antibody to Carbonic Anhydrase II (CA2)   |
| Immunogen:        | Recombinant Carbonic Anhydrase II (CA2) corresponding to Met1~Lys260 (Accession # P27139)  |
| Isotype:          | IgG  |
| Specificity:      | The antibody is a rabbit polyclonal antibody raised against CA2. It has been selected for its ability to recognize CA2 in immunohistochemical staining and western blotting. |
| Cross-Reactivity: | Mouse  |
| Purification:     | Antigen-specific affinity chromatography followed by Protein A affinity chromatography   |

## Target Details

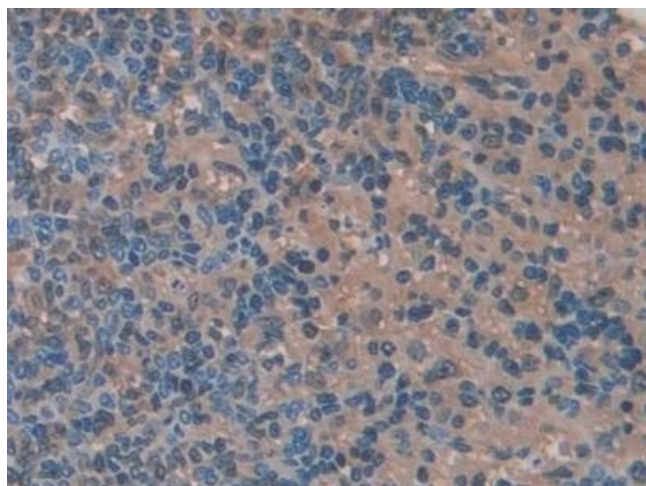
|                   |  |
|-------------------|--|
| Target:           | CA2  |
| Alternative Name: | Carbonic Anhydrase II ( <a href="#">CA2 Products</a> )                 |
| Background:       | CA-II, CAII, Car2, CAC, Carbonate dehydratase II, Carbonic anhydrase C |

## Application Details

|                    |   |
|--------------------|---|
| Application Notes: | Western blotting: 0.5-2 µg/mL Immunocytochemistry in formalin fixed cells: 5-20 µg/mL Immunohistochemistry in formalin fixed frozen section: 5-20 µg/mL Immunohistochemistry in paraffin section: 5-20 µg/mL Enzyme-linked Immunosorbent Assay: 0.05-2 µg/mL Optimal working dilutions must be determined by end user.              |
| Comment:           | The thermal stability is described by the loss rate. The loss rate was determined by accelerated thermal degradation test, that is, incubate the protein at 37°C for 48h, and no obvious degradation and precipitation were observed. The loss rate is less than 5% within the expiration date under appropriate storage condition. |
| Restrictions:      | For Research Use only   |

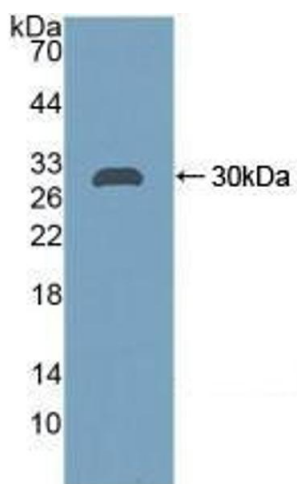
## Handling

|                    |   |
|--------------------|---|
| Format:            | Liquid  |
| Buffer:            | 0.01M PBS, pH 7.4, containing 0.05 % Proclin-300, 50 % glycerol.  |
| Preservative:      | ProClin   |
| Precaution of Use: | This product contains ProClin: a POISONOUS AND HAZARDOUS SUBSTANCE which should be handled by trained staff only.   |
| Storage:           | 4 °C,-20 °C   |
| Storage Comment:   | Store at 4°C for frequent use. Stored at -20°C in a manual defrost freezer for two year without detectable loss of activity. Avoid repeated freeze-thaw cycles. |
| Expiry Date:       | 24 months   |



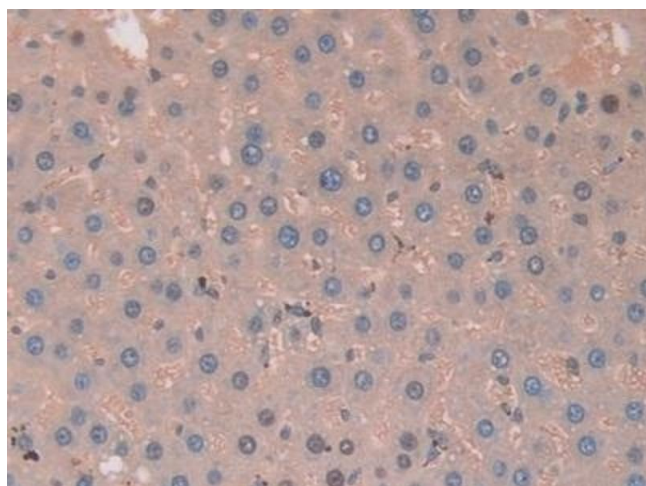
#### Immunohistochemistry

**Image 1.** Detection of CA2 in Rat Spleen Tissue using Polyclonal Antibody to Carbonic Anhydrase II (CA2)



#### Western Blotting

**Image 2.** Detection of Recombinant CA2, Rat using Polyclonal Antibody to Carbonic Anhydrase II (CA2)



#### Immunohistochemistry

**Image 3.** Detection of CA2 in Rat Liver Tissue using Polyclonal Antibody to Carbonic Anhydrase II (CA2)

Please check the [product details page](#) for more images. Overall 7 images are available for ABIN7438433.