

Datasheet for ABIN7438616  
**anti-IL17RE antibody (AA 457-630)**

## 3 Images

[Go to Product page](#)

## Overview

Quantity:	100 µL
Target:	IL17RE
Binding Specificity:	AA 457-630
Reactivity:	Mouse
Host:	Rabbit
Clonality:	Polyclonal
Conjugate:	This IL17RE antibody is un-conjugated
Application:	Western Blotting (WB), Immunohistochemistry (IHC), Immunoprecipitation (IP), Immunocytochemistry (ICC)

## Product Details

Purpose:	Polyclonal Antibody to Interleukin 17 Receptor E (IL17RE)
Immunogen:	Recombinant Interleukin 17 Receptor E (IL17RE) corresponding to Asp457-Ser630 (Accession # Q8BH06)
Isotype:	IgG
Specificity:	The antibody is a rabbit polyclonal antibody raised against IL17RE. It has been selected for its ability to recognize IL17RE in immunohistochemical staining and western blotting.
Cross-Reactivity:	Rat
Purification:	Antigen-specific affinity chromatography followed by Protein A affinity chromatography

## Target Details

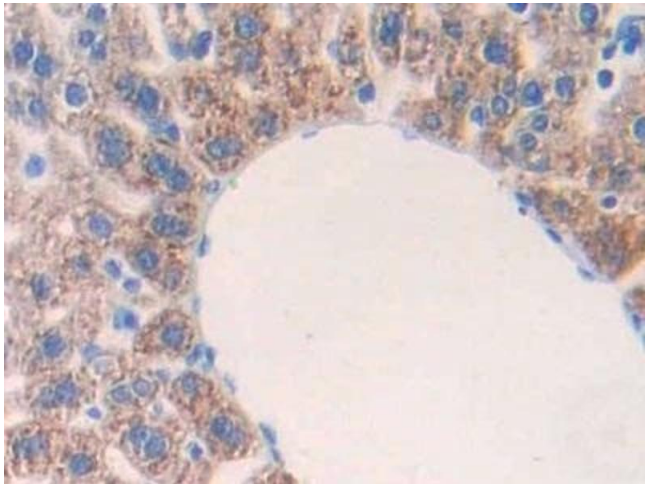
Target:	IL17RE
Alternative Name:	Interleukin 17 Receptor E ( <a href="#">IL17RE Products</a> )
Background:	IL17R-E

## Application Details

Application Notes:	Western blotting: 0.5-2 µg/mL Immunohistochemistry: 5-20 µg/mL Immunocytochemistry: 5-20 µg/mL Optimal working dilutions must be determined by end user.
Comment:	The thermal stability is described by the loss rate. The loss rate was determined by accelerated thermal degradation test, that is, incubate the protein at 37°C for 48h, and no obvious degradation and precipitation were observed. The loss rate is less than 5% within the expiration date under appropriate storage condition.
Restrictions:	For Research Use only

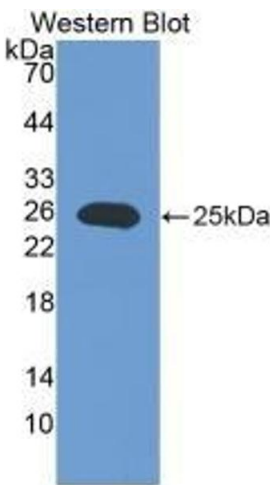
## Handling

Format:	Liquid
Buffer:	0.01M PBS, pH 7.4, containing 0.05 % Proclin-300, 50 % glycerol.
Preservative:	ProClin
Precaution of Use:	This product contains ProClin: a POISONOUS AND HAZARDOUS SUBSTANCE which should be handled by trained staff only.
Storage:	4 °C, -20 °C
Storage Comment:	Store at 4°C for frequent use. Stored at -20°C in a manual defrost freezer for two year without detectable loss of activity. Avoid repeated freeze-thaw cycles.
Expiry Date:	24 months



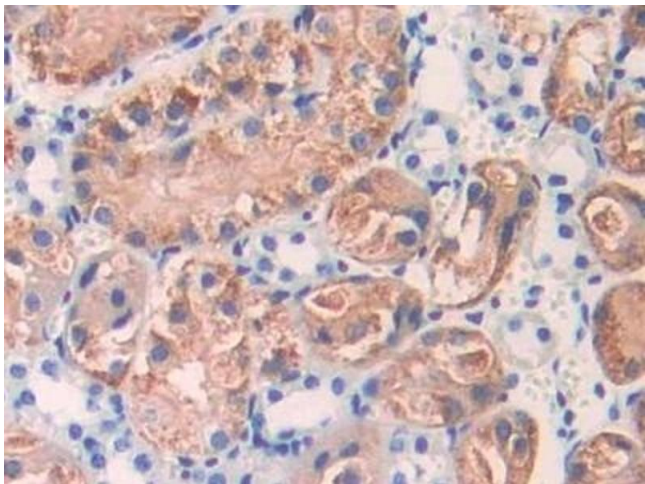
**Immunohistochemistry**

**Image 1.** Detection of IL17RE in Mouse Liver Tissue using Polyclonal Antibody to Interleukin 17 Receptor E (IL17RE)



**Western Blotting**

**Image 2.** Detection of Recombinant IL17RE, Mouse using Polyclonal Antibody to Interleukin 17 Receptor E (IL17RE)



**Immunohistochemistry**

**Image 3.** Detection of IL17RE in Mouse Kidney Tissue using Polyclonal Antibody to Interleukin 17 Receptor E (IL17RE)