



[Go to Product page](#)

Datasheet for ABIN7438631
anti-CXCL13 antibody (AA 22-108)

2 Images

Overview

| | |
|----------------------|--|
| Quantity: | 100 µL |
| Target: | CXCL13 |
| Binding Specificity: | AA 22-108 |
| Reactivity: | Rat |
| Host: | Rabbit |
| Clonality: | Polyclonal |
| Conjugate: | This CXCL13 antibody is un-conjugated |
| Application: | Western Blotting (WB), Immunohistochemistry (IHC), Immunoprecipitation (IP), Immunocytochemistry (ICC) |

Product Details

| | |
|---------------|--|
| Purpose: | Polyclonal Antibody to B-Lymphocyte Chemoattractant 1 (BLC1) |
| Immunogen: | Recombinant B-Lymphocyte Chemoattractant 1 (BLC1) corresponding to Ile22~Ala108 (Accession # Q5I0J6) with N-terminal His and GST Tag |
| Isotype: | IgG |
| Specificity: | The antibody is a rabbit polyclonal antibody raised against BLC1. It has been selected for its ability to recognize BLC1 in immunohistochemical staining and western blotting. |
| Purification: | Antigen-specific affinity chromatography followed by Protein A affinity chromatography |

Target Details

| | |
|---------|--------|
| Target: | CXCL13 |
|---------|--------|

Target Details

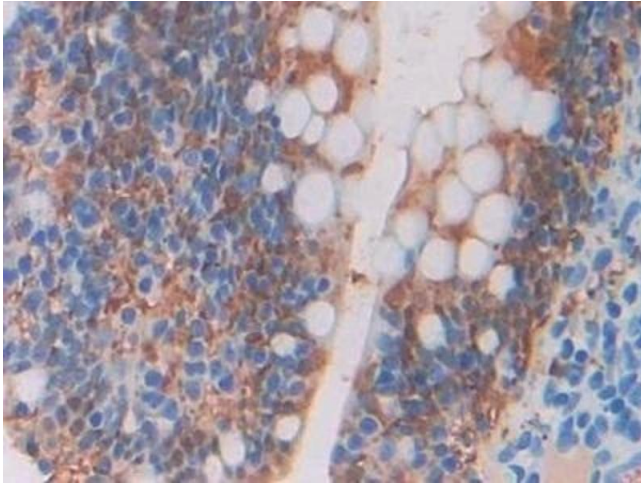
| | |
|-------------------|--|
| Alternative Name: | B-Lymphocyte Chemoattractant 1 (CXCL13 Products) |
| Background: | CXCL13, SCYB13, BLC, BCA1, BLR1L, ANGIE, ANGIE2, Chemokine(C-X-C-Motif)ligand 13, Small Inducible Cytokine B Subfamily(Cys-X-Cys Motif)Member 13 |

Application Details

| | |
|--------------------|---|
| Application Notes: | Western blotting: 0.5-2 µg/mL Immunohistochemistry: 5-20 µg/mL Immunocytochemistry: 5-20 µg/mL Optimal working dilutions must be determined by end user. |
| Comment: | The thermal stability is described by the loss rate. The loss rate was determined by accelerated thermal degradation test, that is, incubate the protein at 37°C for 48h, and no obvious degradation and precipitation were observed. The loss rate is less than 5% within the expiration date under appropriate storage condition. |
| Restrictions: | For Research Use only |

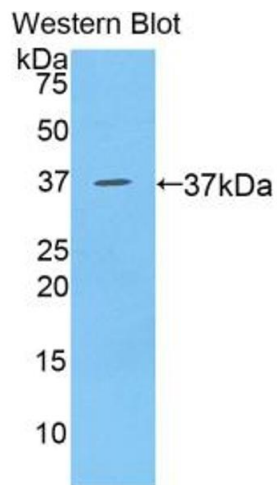
Handling

| | |
|--------------------|---|
| Format: | Liquid |
| Buffer: | PBS, pH 7.4, containing 0.02 % Sodium azide, 50 % glycerol. |
| Preservative: | Sodium azide |
| Precaution of Use: | This product contains Sodium azide: a POISONOUS AND HAZARDOUS SUBSTANCE which should be handled by trained staff only. |
| Storage: | 4 °C,-20 °C |
| Storage Comment: | Store at 4°C for frequent use. Stored at -20°C in a manual defrost freezer for two year without detectable loss of activity. Avoid repeated freeze-thaw cycles. |
| Expiry Date: | 24 months |



Immunohistochemistry

Image 1. Detection of BLC in Rat Intestine Tissue using Polyclonal Antibody to B-Lymphocyte Chemoattractant (BLC)



Western Blotting

Image 2. Detection of Recombinant BLC1, Rat using Polyclonal Antibody to B-Lymphocyte Chemoattractant (BLC)